

WIPX4NMBVAF722

# NETWORK IR BULLET CAMERA

4MP H.265 IP IR Bullet Camera with 7-22mm Auto-Focus Lens, Video Metadata and Facial Recognition



ONVIF®



## Key Features

- H.265+ / H.265 / H.264+ / H.264 / MJPEG coding
- Maximum resolution: 2688 × 1520
- ICR auto switch, true day / night vision
- 70~100m IR night view distance; motorised zoom lens 3D
- DNR, HWDR, HLC, BLC, Defog, Smart IR
- and ROI coding Support
- Image distortion correction
- Built-in micro SD card slot; up to 256GB
- DC12V/PoE power supply
- IP 67 ingress protection
- Support three streams
- Support remote monitoring by smart phones & tablet PCs with iOS and Android OS
- Support SMD
- Support NAT function
- Multiple smart events can be enabled at the same time
- Dual-system backup

The Genie WIPX4NMBVAF722 is a 4MP IP IR bullet camera with a 7-22mm auto-focus lens. The camera features video metadata and facial recognition when paired with any Genie AI NVR.



genie

# Specification

## Camera

<b>Image Sensor</b>	1 / 3" CMOS
<b>Image Size</b>	2688 × 1520
<b>Electronic Shutter</b>	1 / 3s ~ 1 / 100000 s
<b>Iris Type</b>	DC Iris
<b>Minimum Illumination</b>	0.005 lux@F1.6, AGC ON; 0 lux with IR
<b>Lens</b>	7~22mm@F1.6, H.FoV: 43°~18°; V.FoV: 25°~11°; D.FoV: 50°~20°
<b>Focus</b>	Motorised
<b>Lens Mount</b>	Ø14
<b>Angle Adjustment</b>	Pan: 0°~360°; Tilt:0°~90°; Rotation: 0°~360°
<b>Day &amp; Night</b>	ICR
<b>Wide Dynamic Range</b>	120dB
<b>BLC</b>	Yes
<b>HLC</b>	Yes
<b>Defog</b>	Yes
<b>S/N Ratio</b>	≥50dB
<b>Digital NR</b>	3D DNR

## Image

<b>Video Compression</b>	Main stream: H.265+ / H.265 / H.264+ / H.264 Sub/Third stream: H.265+ / H.265 / H.264+ / H.264 / MJPEG
<b>H.264 Compression Standard</b>	Baseline Profile, Main Profile, High Profile
<b>Resolution</b>	4MP (2688×1520), 2592×1520, 2K (2560×1440), 3MP(2304×1296), 1080P (1920×1080), 720P (1280×720), D1, VGA(640×480), 640×360, CIF, 480×240
<b>Main Stream</b>	4MP/2592×1520/2K/3MP/1080P (60Hz: 1 ~ 30fps; 50Hz: 1~25fps)
<b>Sub Stream</b>	1080P (60Hz:1~15fps; 50Hz:1~12fps)/720P/D1/VGA/640×360/480×240/CIF(60Hz: 1 ~ 30fps; 50Hz: 1~25fps)
<b>Third Stream</b>	720P/D1/CIF/480×240 (60Hz : 1 ~ 30fps; 50Hz: 1~25fps)
<b>Bit Rate</b>	64 Kbps ~ 8 Mbps
<b>Bit Rate Type</b>	VBR / CBR
<b>Audio Compression</b>	G711A / U
<b>Image Settings</b>	ROI, Saturation, Brightness, Hue, Contrast, Wide Dynamic, Sharpness, Image Mirror, Image Flip, NR, etc. Adjustable through client software or web browser.
<b>ROI</b>	Each ROI to be configured separately

## Functions

<b>Remote Monitoring</b>	Web browsing, NVMS, NVR, Mobile App
<b>Web Browser</b>	Chrome 105.0+/Edge 105.0+/Firefox 121.0+/Safari 14.0+
<b>Online Connection</b>	Support simultaneous monitoring for up to 8 users; Support multi-stream real time transmission
<b>Network Protocol</b>	UDP, IPv4, IPv6, DHCP, NTP, RTSP, RTP, RTMP, RTCP, PPPoE, DDNS, SMTP, FTP, SNMP,HTTP, 802.1x, UPnP, HTTPS, NAT, QoS
<b>Interface Protocol</b>	Onvif compliant
<b>API &amp; SDK</b>	Yes
<b>Storage</b>	Network remote storage; micro SD card storage
<b>Smart Alarm</b>	Motion detection, SMD, SD card error, SD card full, IP address conflict, network disconnection, sensor alarm, audio alarm
<b>General Function</b>	Watermark, video mask, heartbeat, image distortion correction, corridor pattern, disarming, ANR, cloud upgrade
<b>Security</b>	Video encryption, firmware encryption, HTTPS encryption, configuration encryption, illegal login lock, IP address filtering, 802.1x authentication, basic and digest authentication for HTTP/RTSP/API
<b>PoE</b>	Yes , IEEE802.3af
<b>IR Distance</b>	70 ~ 100 m
<b>Ingress Protection</b>	IP67

## Interface

<b>Network</b>	RJ 45 (10/100 Base-T)
<b>Video Output</b>	CVBS output (BNC×1)
<b>Audio</b>	1CH audio input; 1CH audio output; 1CH built-in MIC
<b>Alarm</b>	1CH alarm input; 1CH alarm output
<b>Storage</b>	Built-in micro SD card slot; up to 256GB
<b>Hardware Reset</b>	Yes

## DORI Distance

Lens	Detect	Observe	Recognise	Identify
7~22mm(W)	137m(449ft)	55m(180ft)	27m(89ft)	14m(45ft)
7~22mm(T)	316m(1036ft)	126m(414ft)	63m(207ft)	32m(104ft)

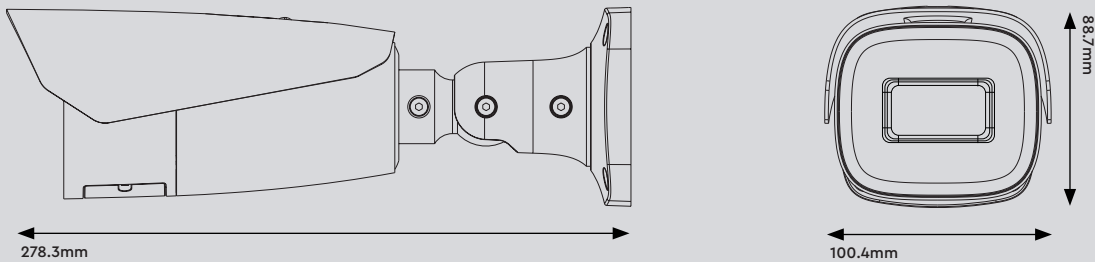
## Intelligent Analytics

<b>Intelligent Video Detection (IVD)</b>	Line crossing, region intrusion/entrance/exiting (human/vehicle classification) loitering detection, illegal parking detection, abandoned/missing object detection
<b>Statistics</b>	Target counting by line/area, heat map
<b>Exception Detection</b>	Scene change, video blur and video cast detection, audio exception
<b>Face Detection</b>	Face detection and face capture
<b>Video Metadata</b>	Simultaneously captures human body, motor vehicle and non-motor vehicle and extracts 13 human features, 4 motor vehicle features and 1 non-motor vehicle feature

## Others

<b>Power Supply</b>	DC12V/PoE
<b>Power Consumption</b>	DC12V: < 9.3W ; PoE: < 10.5W
<b>Storage Conditions</b>	- 30 °C ~ 65°C (-22°F~149°F), Humidity: less than 95 % (non-condensing)
<b>Operating Environment</b>	- 30 °C ~ 60 °C (-22°F~140°F), Humidity: less than 95 % (non-condensing)
<b>Dimensions (mm)</b>	278.3 × 100.4 × 88.9
<b>Weight</b>	Approx. 1.04 Kg
<b>Material</b>	Aluminium alloy body
<b>Installation</b>	Ceiling mounting, wall mounting
<b>Certificate</b>	CE, FCC
<b>Compliance</b>	NDA, PSTI
<b>Environmental Protection</b>	Directive EU RoHS, WEEE(2012/19/EU), and REACH(EC1907/2006)

## Dimensions



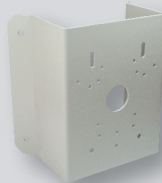
## Accessories



**WJBBVWP**  
Water Resistant Junction Box – White



**WIPMPM**  
Multi Purpose Pole Mount Bracket – White



**WIPMPCM**  
Multi Purpose Corner Mount Bracket – White