

WIPX4NMBVAF550

NETWORK IR BULLET CAMERA

4MP H.265 IP IR Bullet Camera with 5–50mm Auto-Focus Lens, Video Metadata and Facial Recognition



ONVIF®



Key Features

- H.265+ / H.265 / H.264+ / H.264 / MJPEG coding
- Maximum resolution: 2688 × 1520
- ICR auto switch, true day / night vision
- 70~100m IR night view distance; motorised zoom lens 3D
- DNR, HWDR, HLC, BLC, Defog, Smart IR
- and ROI coding Support
- Image distortion correction
- Built-in micro SD card slot; up to 256GB
- DC12V/PoE power supply
- IP 67 ingress protection
- Support three streams
- Support remote monitoring by smart phones & tablet PCs with iOS and Android OS
- Support SMD
- Support NAT function
- Multiple smart events can be enabled at the same time
- Dual-system backup

The Genie **WIPX4NMBVAF550** is a 4MP IP IR bullet camera with a 5–50mm auto-focus lens. The camera features video metadata and facial recognition when paired with any Genie AI NVR.



genie

Specification

Camera

Image Sensor	1 / 3" CMOS
Image Size	2688 × 1520
Electronic Shutter	1 / 3s ~ 1 / 100000 s
Iris Type	DC Iris
Minimum Illumination	0.005 lux@F1.6, AGC ON; 0 lux with IR
Lens	5~50mm@F1.6 H.FoV: 45.5°~7°; V.FoV: 26°~5°; D.FoV: 54°~9°
Focus	Motorised
Lens Mount	Ø14
Angle Adjustment	Pan: 0°~360°; Tilt:0°~90°; Rotation: 0°~360°
Day & Night	ICR
Wide Dynamic Range	120dB
BLC	Yes
HLC	Yes
Defog	Yes
S/N Ratio	≥50dB
Digital NR	3D DNR

Image

Video Compression	Main stream: H.265+ / H.265 / H.264+ / H.264 Sub/Third stream: H.265+ / H.265 / H.264+ / H.264 / MJPEG
H.264 Compression Standard	Baseline Profile, Main Profile, High Profile
Resolution	4MP (2688×1520), 2592×1520, 2K (2560×1440), 3MP(2304×1296), 1080P (1920×1080), 720P (1280×720), D1, VGA(640×480), 640×360, CIF, 480×240
Main Stream	4MP/2592×1520/2K/3MP/1080P (60Hz: 1 ~ 30fps; 50Hz: 1~25fps)
Sub Stream	1080P (60Hz:1~15fps; 50Hz:1~12fps)/720P/D1/VGA/640×360/480×240/CIF(60Hz: 1 ~ 30fps; 50Hz: 1~25fps)
Third Stream	720P/D1/CIF/480×240 (60Hz : 1 ~ 30fps; 50Hz: 1~25fps)
Bit Rate	64 Kbps ~ 8 Mbps
Bit Rate Type	VBR / CBR
Audio Compression	G711A / U
Image Settings	ROI, Saturation, Brightness, Hue, Contrast, Wide Dynamic, Sharpness, Image Mirror, Image Flip, NR, etc. Adjustable through client software or web browser.
ROI	Each ROI to be configured separately

Functions

Remote Monitoring	Web browsing, NVMS, NVR, Mobile App
Web Browser	Chrome 105.0+/Edge 105.0+/Firefox 121.0+/Safari 14.0+
Online Connection	Support simultaneous monitoring for up to 8 users; Support multi-stream real time transmission
Network Protocol	UDP, IPv4, IPv6, DHCP, NTP, RTSP, RTP, RTMP, RTCP, PPPoE, DDNS, SMTP, FTP, SNMP,HTTP, 802.1x, UPnP, HTTPS, NAT, QoS
Interface Protocol	Onvif compliant
API & SDK	Yes
Storage	Network remote storage; micro SD card storage
Smart Alarm	Motion detection, SMD, SD card error, SD card full, IP address conflict, network disconnection, sensor alarm, audio alarm
General Function	Watermark, video mask, heartbeat, image distortion correction, corridor pattern, disarming, ANR, cloud upgrade
Security	Video encryption, firmware encryption, HTTPS encryption, configuration encryption, illegal login lock, IP address filtering, 802.1x authentication, basic and digest authentication for HTTP/RTSP/API
PoE	Yes , IEEE802.3af
IR Distance	70 ~ 100 m
Ingress Protection	IP67

Interface

Network	RJ 45 (10/100 Base-T)
Video Output	CVBS output (BNC×1)
Audio	1CH audio input; 1CH audio output; 1CH built-in MIC
Alarm	1CH alarm input; 1CH alarm output
Storage	Built-in micro SD card slot; up to 256GB
Hardware Reset	Yes

DORI Distance

Lens	Detect	Observe	Recognise	Identify
5~50mm(W)	73(163ft)	29m(95ft)	15m(49ft)	7m(23ft)
5~50mm(T)	497m(1631)	199m(653ft)	99m(325ft)	50m(164ft)

Intelligent Analytics

Intelligent Video Detection (IVD)

Line crossing, region intrusion/entrance/exiting (human/vehicle classification) loitering detection, illegal parking detection, abandoned/missing object detection

Statistics

Target counting by line/area, heat map

Exception Detection

Scene change, video blur and video cast detection, audio exception

Face Detection

Face detection and face capture

Video Metadata

Simultaneously captures human body, motor vehicle and non-motor vehicle and extracts 13 human features, 4 motor vehicle features and 1 non-motor vehicle feature

Others

Power Supply

DC12V/PoE

Power Consumption

DC12V: < 9.3W ; PoE: < 10.5W

Storage Conditions

- 30 °C ~ 65°C (-22°F~149°F), Humidity: less than 95 % (non-condensing)

Operating Environment

- 30 °C ~ 60 °C (-22°F~140°F), Humidity: less than 95 % (non-condensing)

Dimensions (mm)

278.3 × 100.4 × 88.9

Weight

Approx. 1.04 Kg

Material

Aluminium alloy body

Installation

Ceiling mounting, wall mounting

Certificate

CE, FCC

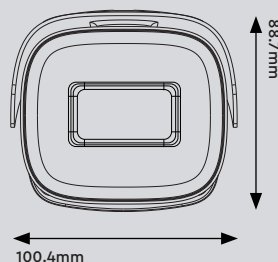
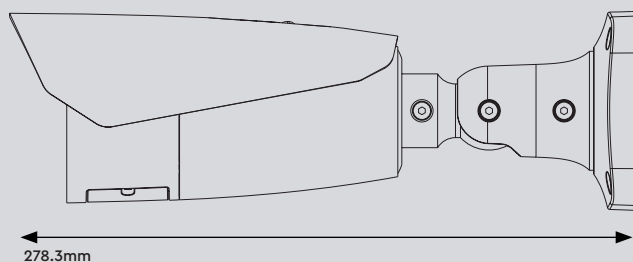
Compliance

NDAA, PSTI

Environmental Protection

Directive EU RoHS, WEEE(2012/19/EU), and REACH(EC1907/2006)

Dimensions



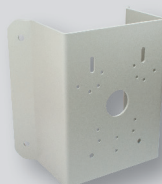
Accessories



WJBBVWP
Water Resistant Junction
Box – White



WIPMPM
Multi Purpose Pole Mount
Bracket – White



WIPMPCM
Multi Purpose Corner
Mount Bracket – White