

WIPX4NMBVAF

NETWORK IR BULLET CAMERA

4MP H.265 IP IR Bullet Camera with 2.8–12mm Auto-Focus Lens, Video Metadata and Facial Recognition



ONVIF®



Key Features

- H.265+ / H.265 / H.264+ / H.264 / MJPEG coding
- Maximum resolution: 2688 × 1520
- ICR auto switch, true day / night vision
- 50~70m IR night view distance; motorised zoom lens 3D
- DNR, HWDR, HLC, BLC, Defog, Smart IR
- and ROI coding Support
- Image distortion correction
- Built-in micro SD card slot; up to 256GB
- DC12V/PoE power supply
- IP 67 ingress protection
- Support three streams
- Support remote monitoring by smart phones & tablet PCs with iOS and Android OS
- Support SMD
- Support NAT function
- Multiple smart events can be enabled at the same time
- Dual-system backup

The Genie WIPX4NMBVAF is a 4MP IP IR bullet camera with a 2.8–12mm auto-focus lens. The camera features video metadata and facial recognition when paired with any Genie AI NVR.



genie

Specification

Camera

| | |
|-----------------------------|--|
| Image Sensor | 1 / 3" CMOS |
| Image Size | 2688 × 1520 |
| Electronic Shutter | 1 / 3s ~ 1 / 100000 s |
| Iris Type | DC Iris |
| Minimum Illumination | 0.005 lux@F1.6, AGC ON; 0 lux with IR |
| Lens | 2.8~12mm@F1.3, H.FoV: 100.0°~28.9°; V.Fov: 54.5°~16.7°; D.FoV: 118°~35° |
| Focus | Motorised |
| Lens Mount | Ø14 |
| Angle Adjustment | Pan: 0°~360°; Tilt:0°~90°; Rotation: 0°~360° |
| Day & Night | ICR |
| Wide Dynamic Range | 120dB |
| BLC | Yes |
| HLC | Yes |
| Defog | Yes |
| S/N Ratio | ≥50dB |
| Digital NR | 3D DNR |

Image

| | |
|-----------------------------------|--|
| Video Compression | Main stream: H.265+ / H.265 / H.264+ / H.264 Sub/Third stream: H.265+ / H.265 / H.264+ / H.264 / MJPEG |
| H.264 Compression Standard | Baseline Profile, Main Profile, High Profile |
| Resolution | 4MP (2688×1520), 2592×1520, 2K (2560×1440), 3MP(2304×1296), 1080P (1920×1080), 720P (1280×720), D1, VGA(640×480), 640×360, CIF, 480×240 |
| Main Stream | 4MP/2592×1520/2K/3MP/1080P (60Hz: 1 ~ 30fps; 50Hz: 1~25fps) |
| Sub Stream | 1080P (60Hz:1~15fps; 50Hz:1~12fps)/ 720P/D1/VGA/640×360/480×240/ CIF(60Hz: 1 ~ 30fps; 50Hz: 1~25fps) |
| Third Stream | 720P/D1/CIF/480×240 (60Hz : 1 ~ 30fps; 50Hz: 1~25fps) |
| Bit Rate | 64 Kbps ~ 8 Mbps |
| Bit Rate Type | VBR / CBR |
| Audio Compression | G711A / U |
| Image Settings | ROI, Saturation, Brightness, Hue, Contrast, Wide Dynamic, Sharpness, Image Mirror, Image Flip, NR, etc. Adjustable through client software or web browser. |
| ROI | Each ROI to be configured separately |

Functions

| | |
|---------------------------|---|
| Remote Monitoring | Web browsing, NVMS, NVR, Mobile App |
| Web Browser | Chrome 105.0+/Edge 105.0+/Firefox 121.0+/Safari 14.0+ |
| Online Connection | Support simultaneous monitoring for up to 8 users; Support multi-stream real time transmission |
| Network Protocol | UDP, IPv4, IPv6, DHCP, NTP, RTSP, RTP, RTMP, RTCP, PPPoE, DDNS, SMTP, FTP, SNMP,HTTP, 802.1x, UPnP, HTTPS, NAT, QoS |
| Interface Protocol | Onvif compliant |
| API & SDK | Yes |
| Storage | Network remote storage; micro SD card storage |
| Smart Alarm | Motion detection, SMD, SD card error, SD card full, IP address conflict, network disconnection, sensor alarm, audio alarm |
| General Function | Watermark, video mask, heartbeat, image distortion correction, corridor pattern, disarming, ANR, cloud upgrade |
| Security | Video encryption, firmware encryption, HTTPS encryption, configuration encryption, illegal login lock, IP address filtering, 802.1x authentication, basic and digest authentication for HTTP/RTSP/API |
| PoE | Yes , IEEE802.3af |
| IR Distance | 50 ~ 70 m |
| Ingress Protection | IP67 |

Interface

| | |
|-----------------------|---|
| Network | RJ 45 (10/100 Base-T) |
| Video Output | CVBS output (BNC×1) |
| Audio | 1CH audio input; 1CH audio output; 1CH built-in MIC |
| Alarm | 1CH alarm input; 1CH alarm output |
| Storage | Built-in micro SD card slot; up to 256GB |
| Hardware Reset | Yes |

DORI Distance

| Lens | Detect | Observe | Recognise | Identify |
|-------------|-------------|------------|------------|-----------|
| 2.8~12mm(W) | 58m(193ft) | 23m(77ft) | 11m(38ft) | 5m(19ft) |
| 2.8~12mm(T) | 205m(675ft) | 82m(270ft) | 41m(135ft) | 20m(67ft) |

Intelligent Analytics

Intelligent Video Detection (IVD)

Line crossing, region intrusion/entrance/exiting (human/vehicle classification) loitering detection, illegal parking detection, abandoned/missing object detection

Statistics

Target counting by line/area, heat map

Exception Detection

Scene change, video blur and video cast detection, audio exception

Face Detection

Face detection and face capture

Video Metadata

Simultaneously captures human body, motor vehicle and non-motor vehicle and extracts 13 human features, 4 motor vehicle features and 1 non-motor vehicle feature

Others

Power Supply

DC12V/PoE

Power Consumption

DC12V: < 9.3W ; PoE: < 10.5W

Storage Conditions

- 30 °C ~ 65°C (-22°F~149°F), Humidity: less than 95 % (non-condensing)

Operating Environment

- 30 °C ~ 60 °C (-22°F~140°F), Humidity: less than 95 % (non-condensing)

Dimensions (mm)

278.3 × 100.4 × 88.9

Weight

Approx. 1.04 Kg

Material

Aluminium alloy body

Installation

Ceiling mounting, wall mounting

Certificate

CE, FCC

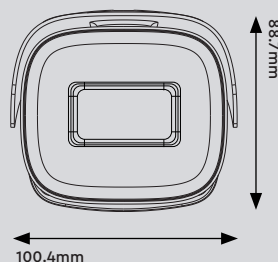
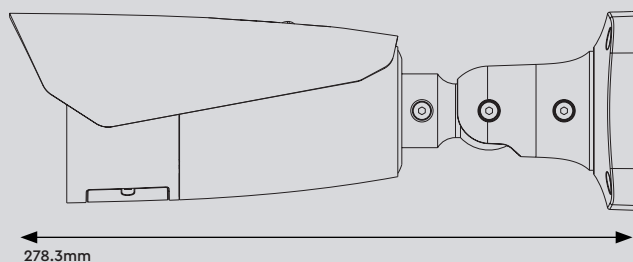
Compliance

NDAA, PSTI

Environmental Protection

Directive EU RoHS, WEEE(2012/19/EU), and REACH(EC1907/2006)

Dimensions



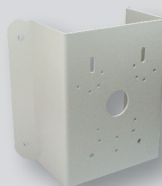
Accessories



WJBBVWP
Water Resistant Junction Box – White



WIPMPM
Multi Purpose Pole Mount Bracket – White



WIPMPCM
Multi Purpose Corner Mount Bracket – White