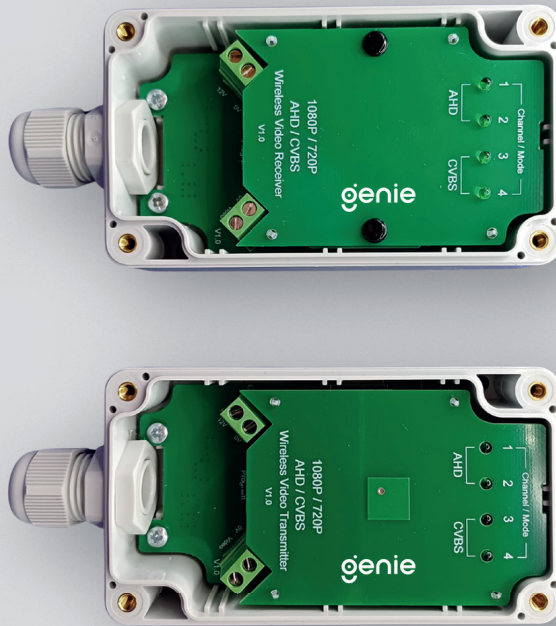


RF200HD

WIRELESS VIDEO TRANSMISSION

IP65 200m HD Wireless Video Link Pair



Key Features

- 5.8GHz
- IP65 rated
- 2 RF channels
- 10 -14VDC operation voltage
- High quality AHD 1080P (2MP) video
- 200 Metres HD range (Line of Sight)*
- 1000 Metres CVBS range (Line of Sight)*
- 4 LED (RSSI) signal strength meter
- Directional antennas (Reduced interference)

Note: * In ideal conditions

The Genie RF200HD is a high-quality FHD compatible wireless video link designed for easy installation and reliable transmission. Housed in a compact IP65- rated weather resistant enclosure, both the transmitter and receiver are suitable for outdoor installations without the need for additional protection from the elements.

Supporting up to 1080P resolution for AHD video signals, our RF100HD can offer up to 200-metres of wireless range, and up to 1000-metres in CVBS mode (line of sight).



genie

Specification

Electrical

Operating Voltage	10—14V DC (Max)
Operating Current (Transmitter)	180mA (Max)
Operating Current (Receiver)	140mA (Max)

Transmitter

Operating Frequencies	5740MHz & 5860MHz
Transmit Power	<= 14dBm
Video Input	1Vpp
Video Modulation	FM
RF Bandwidth (ADHD 1080P)	55MHz
RF Bandwidth (CVBS)	28MHz

Compliance

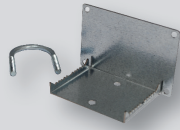
EMC	EN301-489
Radio	EN300-440

Accessories



RF2-4DP

Dual Base Plate for use with RF200D, RF200V, RF450V, RF200HD, RF100HD and RF50HD (Maximum 1 video and 1 data)



RF200PM

Pole Mount Kit for RF200D, RF200V, RF450V, RF200HD, RF100HD and RF50HD.

Receiver

Operating Frequencies	5740MHz & 5860MHz
RF Input Level	-85 ~ -10dBm
Video Output	0.6 ~ 0.9Vpp

Mechanical

Housing size without Aerial and Grommet	115 × 65 × 40mm
Housing Rating	IP65

Environmental

Temperature Range	-20 to + 55°C
Relative Humidity	95% (Non-Condensing)