

CADIP4NEB

# NETWORK EYEBALL CAMERA

4MP Active Deterrent Eyeball Camera with 2.8mm Lens



ONVIF®

## Key Features

- H.265+/H.265/H.264+/H.264/ MJPEG coding
- Maximum resolution: 2688 × 1520
- 30 ~ 40m IR or white light range
- 3D DNR, true WDR, HLC, BLC, Defog and ROI coding
- 1CH audio input; 1CH audio output
- 1CH built-in speaker; 1CH built-in microphone
- Built-in micro SD card slot, up to 256GB
- DC12V/PoE power supply
- IP66 ingress protection
- Support three streams
- Support remote monitoring by smart phones & tablet PCs with iOS and Android
- OS
- Intelligent analytics
- Support smart supplement light
- Blue and red light warning (flashing alternately)
- Support user-defined warning voice import

The Genie CADIP4NEB is a 4MP IP IR active deterrent eyeball camera with a 2.8-mm fixed lens. The camera features dual illumination and intelligent analytics



genie

## Specification

### Camera

Image Sensor	1 / 3 "CMOS
Image Size	2688 × 1520
Electronic Shutter	1 / 3s ~ 1 / 100000 s
Iris Type	Fixed Iris
Minimum Illumination	0.03lux@F1.6,AGC ON; 0 lux with LED
Lens	2.8 mm@F1.6, H.FoV:96°; V.FoV: 54.5°; D.FoV:113°
Focus	Fixed
Lens Mount	M12
Wide Dynamic Range	120dB
BLC	Yes
HLC	Yes
Defog	Yes
Digital NR	2D/3D DNR
S/N Ratio	≥50dB
Angle Adjustment	Pan: 0°~360°; Tilt:0°~75°; Rotation: 0°~360°

### Image

Video Compression	Main stream: H.265+ / H.265 / H.264+ / H.264 Sub/Third stream: H.265+ / H.265 / H.264+ / H.264 / MJPEG
H.264 Compression Standard	Baseline Profile/Main Profile/High Profile
Resolution	4MP(2688×1520)/(2592×1520), 2K (2560×1440), 3MP (2304×1296),1080P (1920×1080),720P(1280×720), D1, VGA(640×480),640×360,CIF, 480×240
Main Stream	4MP/2K/3MP/1080P/720P( 60Hz : 1 ~ 30fps; 50Hz: 1~25fps )
Sub Stream	720P/D1/VGA/640×360/CIF/480×240 ( 60Hz: 1 ~ 30fps; 50Hz: 1~25fps )
Third Stream	720P/D1/CIF/480×240 ( 60Hz : 1 ~ 30fps; 50Hz: 1~25fps )
Bit Rate	64 Kbps ~ 8 Mbps
Bit Rate Type	VBR / CBR
Audio Compression	G711A / U
Image Settings	ROI, Saturation, Brightness, Hue, Contrast, Wide Dynamic, Sharpness, Image Mirror, Image Flip, NR. Adjustable through client software or web browser
ROI	Each ROI to be configured separately

### Functions

Remote Monitoring	Web Client/NVR/NVMS2.0/Mobile APP
Web Browser	IE11(plug-in required)/Chrome 89.0+/Edge 89.0+/Firefox 87.0+/Safari 14.0+
Online Connection	Support simultaneous monitoring for up to 10 users; Support multi-stream real time transmission
Network Protocol	UDP, IPv4, IPv6, DHCP, NTP, RTSP, RTP, RTCP, PPPoE, DDNS, SMTP, FTP, SNMP, RTMP, HTTP, 802.1x, UPnP, HTTPS, HTTP POST, QoS
Interface Protocol	Onvif compatible
Storage	Network remote storage; micro SD card storage
Smart Alarm	Motion detection, sensor alarm, SD card error, SD card full, IP address conflict, Cable connection, audio alarm, light alarm
General Function	Watermark, IP address filtering, video mask, heartbeat, password protection, image distortion correction, smart supplement light, disarming
Security	Video encryption, firmware encryption, HTTPs encryption, configuration encryption, illegal login lock, IP address filtering, 802.1x authentication, basic and digest authentication for HTTP/HTTPS
PoE	Yes
Supplement light Range	IR range: 30 ~ 40 m White light range: 30 ~ 40 m
Protection Grade	IP66

### Interface

Network	RJ 45 10M/100M self-adaptive Ethernet port
Video Output	No
Alarm	1CH alarm input; 1CH alarm output
Audio	1CH audio input; 1CH audio output;
Storage	Built-in micro SD card slot; up to 256GB
Hardware Reset	Yes

## Intelligent Analytics

<b>Statistics</b>	Target counting by line/area, heat map
<b>Smart Event</b>	Line crossing, region intrusion/entrance/exiting (human/vehicle classification) loitering detection, illegal parking detection, abandoned/ missing object detection
<b>Exception Detection</b>	Scene change, video blur and abnormal color detection, audio exception
<b>Face Detection</b>	Face detection and face capture
<b>Video Metadata</b>	Simultaneously captures human body, motor vehicle and non-motor vehicle and extracts 13 human features, 5 motor vehicle features and 1 non-motor vehicle feature

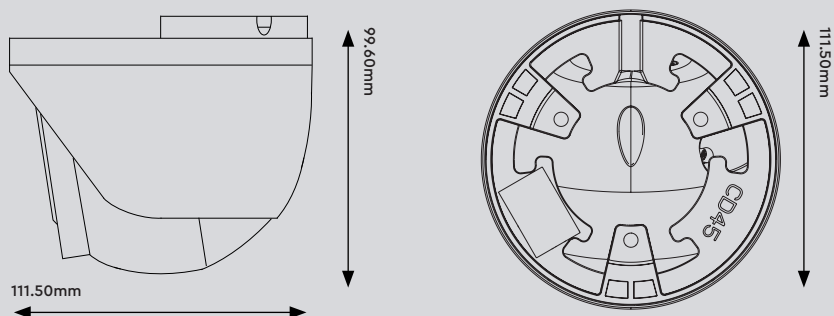
## DORI Distance

Lens	Detect	Observe	Recognise	Identify
2.8 ~ 12mm (W)	58m(193ft)	23m(77ft)	11m(38ft)	5m(19ft)

## Others

<b>Power Supply</b>	DC12V/PoE
<b>Power Consumption</b>	< 12W
<b>Storage Conditions</b>	-30 °C ~ 65°C (-22°F~149°F), Humidity: less than 95 % (non-condensing)
<b>Operating Environment</b>	-30 °C ~ 60 °C (-22°F~140°F), Humidity: less than 95 % (non-condensing)
<b>Dimensions</b>	Ø111.5 × 99.6
<b>Weight</b>	Approx. 0.64KG
<b>Installation</b>	Ceiling mounting; wall mounting

## Dimensions



## Accessories



**WJBBVWP**  
Water Resistant Junction Box



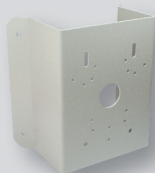
**WJBEBV**  
Junction Box for Varifocal and Auto Focus Eyeball Cameras



**WBEBVW**  
Wall Bracket for Eyeball Cameras – White



**WIPMPPM**  
Multi Purpose Pole Mount Bracket – White



**WIPMPCM**  
Multi Purpose Corner Mount Bracket – White