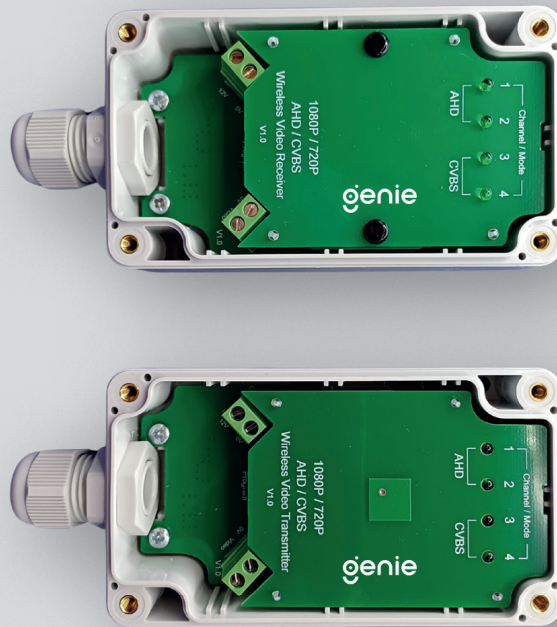


RF100HD

WIRELESS VIDEO TRANSMISSION

IP65 100m HD Wireless Video Link Pair



Key Features

- 5.8GHz
- IP65 rated
- 2 RF channels
- 10 -14VDC operation voltage
- High quality AHD 1080P (2MP) video
- 100 Metres HD range** (Line of Sight)*
- 800 Metres CVBS range (Line of Sight)*
- 4 LED (RSSI) signal strength meter
- Directional antennas (Reduced interference)

Note: * In ideal conditions ** 50 Meters recommended minimum distance

The Genie RF100HD is a high-quality FHD compatible wireless video link designed for easy installation and reliable transmission. Housed in a compact IP65- rated weather resistant enclosure, both the transmitter and receiver are suitable for outdoor installations without the need for additional protection from the elements.

Supporting up to 1080P resolution for AHD video signals, our RF100HD can offer up to 100-metres of wireless range, and up to 800-metres in CVBS mode (line of sight).



genie

Specification

Electrical

| | |
|--|-----------------|
| Operating Voltage | 10—14V DC (Max) |
| Operating Current (Transmitter) | 180mA (Max) |
| Operating Current (Receiver) | 140mA (Max) |

Transmitter

| | |
|------------------------------|-------------------|
| Operating Frequencies | 5740MHz & 5860MHz |
| Transmit Power | <= 14dBm |
| Video Input | 1Vpp |
| Video Modulation | FM |

Receiver

| | |
|------------------------------|-------------------|
| Operating Frequencies | 5740MHz & 5860MHz |
| RF Input Level | -85 ~ -10dBm |
| Video Output | 0.6 ~ 0.9Vpp |

Mechanical

| | |
|--|-----------------|
| Housing size without Aerial and Grommet | 115 × 65 × 40mm |
| Housing Rating | IP65 |

Environmental

| | |
|----------------------------------|---|
| Temperature Range | -20 to + 55°C |
| Relative Humidity | 95% (Non-Condensing) |
| Bandwidth (AHD 1080P) | 40MHz |
| Bandwidth (CVBS) | 5.5MHz |
| Distance (Line of sight)* | Up to 100 Metres FHD (2MP)** Up to 800 Metres CVBS |

Compliance

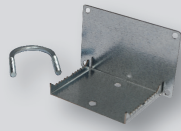
| | |
|------------|-----------|
| EMC | EN301-489 |
|------------|-----------|

Accessories



RF2-4DP

Dual Base Plate for use with RF200D, RF200V, RF450V, RF100HD and RF50HD (Maximum 1 video and 1 data)



RF200PM

Pole Mount Kit for RF200D, RF200V, RF450V, RF100HD and RF50HD.