

SSAHD2B

BULLET CAMERA

2MP Stainless Steel AHD IR Bullet Camera with 3.6mm Fixed Lens



Key Features

- 1/2.8" Sony Starvis CMOS image sensor
- Full HD Mega Pixel (1080p)
- Auto compensation and long range transmission
- Stainless steel body (AISI 316L grade)
- 3.6mm megapixel lens
- 24 pcs pearl LED's
- True day & night with ICR mechanism
- 3D DNR (Digital Noise Reduction)
- D-WDR (Digital Wide Dynamic Range)
- IP67 ingress protection
- DC12V
- Wall mount bracket option
- NDAA compliant

The Genie **SSAHD2B** is a stainless steel AHD 2MP bullet camera with a 3.6mm fixed lens and 24 LED's. The body is 316 grade stainless steel making this camera an ideal choice for applications in harsh environments.



Specification

Camera

| | |
|-----------------------------|--|
| Image Sensor | 1/2.8" Sony Starvis CMOS sensor |
| Scanning System | Progressive |
| Resolution | 1080p |
| Minimum Illumination | 0.01 Lux at IR off (F1.0) 0.00 Lux at IR on |
| Lens | 3.6mm megapixel fixed lens (ICR) |
| S / N Ratio | More than 50dB (AGC Off) |
| Video Output | Universal AHD, CVI, TVI: 1080p, 720p Analogue: NTSC/ PAL CVBS |

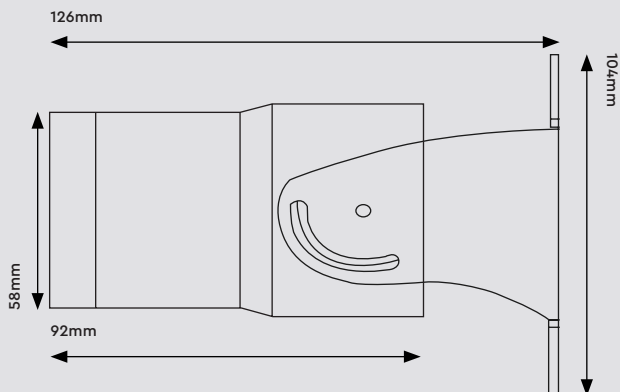
Functions

| | |
|-------------------------|---------------------------|
| Sens-Up | Off / x2 - x30 |
| DNR | Off / Low / Middle / High |
| Backlight | Off / BLC / HSBLC |
| D-WDR | Off / 0-8 |
| Motion Detection | Off / On |
| Privacy Mask | 4 Masks |

Others

| | |
|----------------------------|--|
| Ingress Protection | IP67 |
| Power Supply | DC12V ($\pm 10\%$) |
| Power Consumption | Max 4.0W |
| Working Environment | Temperature: $-10^{\circ}\text{C} \sim 50^{\circ}\text{C}$, Humidity: 10 % \sim 85 % |
| Dimensions | 58 \times 126 \times 104 mm |
| Weight | 1200g |

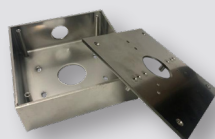
Dimensions



Accessories



PSU1SM
DC12V 1A Regulated Switch
Mode Power Supply



SSMPJB
Stainless Steel Multi-
Purpose Junction Box