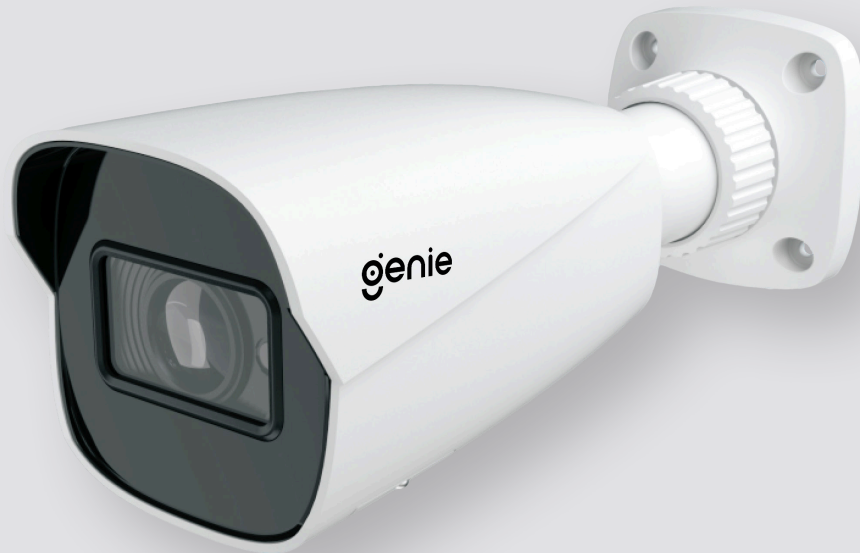


PWIP4NBVAF

BULLET CAMERA

4MP H.265 IP IR Bullet Camera with 2.8–12mm Lens



ONVIF®



Key Features

- NDA Compliant
- H.265 + / H.265 / H.264 + / H.264 / MJPEG coding
- Maximum resolution: 4MP (2560 × 1440)
- ICR auto switch, true day / night vision
- 3D DNR, WDR, HLC, BLC, smart IR, etc.
- 30~50m IR night view distance
- Supports remote monitoring by smart phones and tablet PCs with iOS and Android OS
- DC12V / PoE power supply
- IP67 ingress protection
- Supports dual streams
- Built-in micro SD card slot, up to 256GB
- Onvif compliant

The Genie **PWIP4NBVAF** is a 4MP IP IR bullet camera with a 2.8–12mm varifocal lens. The cameras also feature up to 50m IR night view distance as well as being IP67.



genie

Specification

Camera

Image Sensor	1 / 3 "CMOS
Image Size	2560 × 1440
Electronic Shutter	1 / 2 s ~ 1 / 100000 s
Iris Type	Fixed Iris
Minimum Illumination	0.005 lux @F1.6, AGC ON; 0 lux with IR
Lens	2.8~12mm @ F1.4
Field of View	Horizontal: 94°~31° ; Vertical: 52°~17.6° ; Diagonal: 112° ~ 35.6 °
Focus	Varifocal (motorized)
Lens Mount	Ø14
Day & Night	ICR
Wide Dynamic Range	120dB
BLC	Yes
HLC	Yes
Defog	No
Digital NR	Yes
Angle Adjustment	Pan: 0°~360°,Tilt: 0°~90°, Rotation: 0°~360°

Image

Video Compression	Main stream: H.265+ / H.265 / H.264+ / H.264 Sub stream: H.265+ / H.265 / H.264+ / H.264 / MJPEG
H.265 Compression Standard	Main Profile @ Level 4.1 High Tier
Resolution	4MP (2560 × 1440), 3MP (2304 × 1296), 1080p (1920 × 1080), 720p (1280 × 720), D1, CIF
Main Stream	60Hz: 4MP/3MP/1080P/720P(1~30fps); 50Hz: 4MP/3MP/1080P/720P(1~25fps)
Sub Stream	60Hz : 720p, D1, CIF (1~30fps) 50Hz: 720p, D1, CIF (1~25fps)
Bit Rate	64 Kbps ~ 8 Mbps
Bit Rate Type	VBR / CBR
Image Settings	ROI, Saturation, Brightness, Hue, Contrast, Wide Dynamic, Sharpness, NR, etc. Adjustable through client software or web browser
ROI	Each ROI to be configured separately

Functions

Remote Monitoring	Web browser / NVMS2.X / Mobile APP
Web Browser	IE (plug-in required) / Google Chrome / Edge / Firefox / Safari
Online Connection	Supports simultaneous monitoring for up to 3 users. Supports multi-stream real time transmission
Network Protocol	UDP, IPv4, IPv6, DHCP, NTP, RTSP, PPPoE, DDNS, SMTP, FTP, 802.1x, SNMP, UPnP, HTTP, HTTPS, QoS
Interface Protocol	Onvif
Storage	Network remote storage; micro SD card storage
Smart Alarm	Motion detection, SD card full, SD card error
General Function	Watermark, IP address filtering, video mask, heartbeat, illegal login lock
PoE	Yes
IR Distance	30 ~ 50 m

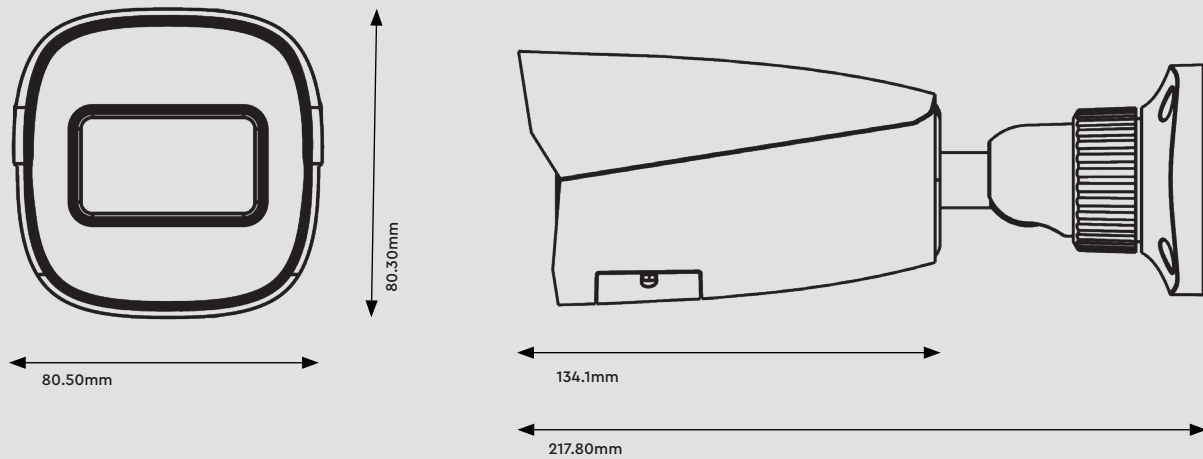
Interface

Network	RJ45
Video Output	No
Audio	1CH audio input
Storage	Built-in micro SD card slot, up to 256GB
Hardware Reset	Yes

Others

Ingress Protection	IP67
Power Supply	DC12V / PoE
Power Consumption	< 8W
Operating Environment	- 30°C ~ 60°C (-22°F~140°F), Humidity: Less than 95 % (Non-condensing)
Dimensions	Ø 217.7 × 80.5
Weight	Approximately 0.66Kg
Installation	Ceiling mounting; Wall mounting

Dimensions



Accessories



WJBSBWP

Water Resistant Junction Box for Varifocal Bullet Cameras and Fixed Eyeballs - White



WIPSB

Small Sized Junction Box for Bullet and Eyeball Cameras - White



WIPSWM

Surface Mount Wall Bracket (Junction Box NOT included) - White



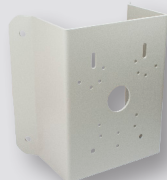
WIPSCM

Ceiling Mount for Vandal Resistant Domes (Requires associated JB) - White



WIPMPM

Multi Purpose Pole Mount Bracket - White



WIPMPCM

Multi Purpose Corner Mount Bracket - White