

4 Channel H.265 Optimised NVR with 1HDD Bay

WONVR14P5



Quick Start Guide

Please read these instructions carefully before operating the unit
and keep for further reference.

Please read this instruction carefully before operating the product and keep it for further reference. All examples and pictures used here are for reference only. The contents of this manual are subject to change without notice. This device should be operated only from the type of power source indicated on the marking label. The voltage of the power must be verified before use.

CAUTION:

- Please check the device and the accessories after getting the device. If there are any damages, shortages or defects, please contact your dealer immediately.

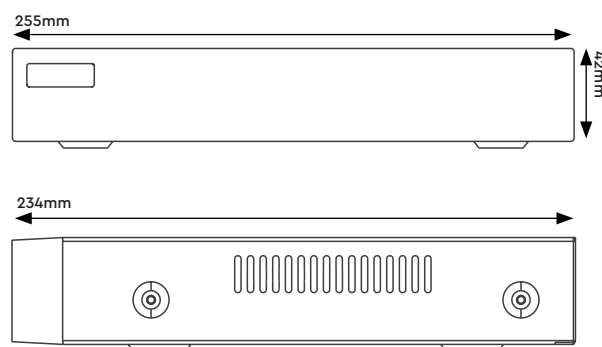
1.0 Introduction.....	4
1.1 Product Features.....	4
1.2 Product Dimensions	4
1.3 Specification.....	5
2.0 HDD Installation	6
3.0 Rear Panel Instruction.....	7
4.0 Start Up and Shut Down.....	8
5.0 Login and Disk Settings	9
5.1 Login	9
5.2 Disk Settings	9
6.0 Configurations and Connections	10
6.1 Network Configuration & Adding IP Camera.....	10
7.0 Record Settings.....	11
8.0 NAT.....	12
9.0 Manual Recording and Playback	13
9.1 Manual Recording.....	13
9.2 Playback.....	13

The Genie 'Optimised' WONVR14P5 PoE Network video recorder offers 4 channel recording of up to 5 Mega Pixels on every channel. The WONVR14P5 NVR supports 4 channel simultaneous playback and has 4 PoE ports.

1.1 Product Features

- Supports 4 channel 5MP, 4MP, 3MP, 1080p, 960p and 720p IP input
- Adopt standard H.265 and H.264 high profile compression format to get high quality video at much lower bit rate
- Intuitive and user friendly Graphic User Interface (GUI), Windows style operation by mouse
- Multi-mode recording: Manual / Timer / Motion / Sensor
- Search : Time slice, time, event (Manual, sensor, motion), Tag search
- Express and flexible backup via USB, network etc.
- 4 channel simultaneous playback
- Pentaplex : Preview, Record, Playback, Backup and Remote Access
- DHCP, DDNS, PPPoE network protocol and CMS supported
- Remote control via IE or CMS : Preview, playback, backup, PTZ and configuration
- Dual stream technology for local storage with high definition, remote network transmission and remote surveillance with mobile device
- Multi-user online simultaneously
- Authorisation management, log view and device status view
- 1080p HD output, true high resolution display
- Support PTZ preset and auto cruise, up to 255 presets and 8 cruises
- Support NAT function and QR code scanning by mobile phone and iPad
- Powerful smart phone & iPad surveillance with iOS and Android OS

1.2 Product Dimensions



1.3 Specification

	Model	WONVR14P5
System	OS	Embedded Linux
Video	Network Input	4 CH IPC input
	Network Access Format	5MP / 4MP / 3MP / 1080p / 960p / 720p @ 25 / 30fps
	Output	HDMI x 1 : 1920×1080 / 1280×1024 / 1024×768 VGA x 1 : 1920×1080 / 1280×1024 / 1024×768
	Compression	Standard H.265, H.264
Audio	Network Input	4 CH IPC audio input
	Audio Local Output	No (HDMI supports the audio output)
Record	Record Stream	Dual stream recording
	Resolution	5MP / 4MP / 3MP / 1080p / 960p / 720p @ 25 / 30fps
	Mode	Manual, Timer, Motion, Sensor
Mobile Device	OS	iOS, Android
Storage	HDD	SATA x 1, up to 6TB per HDD
Playback	Simultaneous Playback	4 CH max.
	Search	Time slice / Time / Event / Tag search
	Smart Search	Highlighted colour to display the camera record in a certain period of time, different colours refer to different record events
	Function	Play, Pause, FF, FB, Digital zoom, etc
Network	Interface	RJ45 100 Mbps x 1
	Protocol	TCP / IP, PPPoE, DHCP, DNS, DDNS, UPnP, NTP, SMTP
	IP Input Access / Transfer Bandwidth	32Mbps / 32Mbps
Alarm	Mode	Manual, Sensor, Motion, Exception
	Input	No
	Output	No
	Triggering	Record, Snap, Preset, E-mail, etc.
Remote Monitoring	Immix	Compatible with Immix via RTSP only (2-way audio not supported)
	Sentinel	Yes, Firmware 1.1.0 or later
Backup	Local Backup	USB Stick, USB mobile HDD
	Network Backup	Yes
Port	USB	USB 2.0 x 2
	Remote Controller	Optional
Others	Power Supply	DC12V, 1.5A
	Consumption	<6W (Without HDD)
	Working Environment	Temperature: -10°C – 50°C, Humidity: 10% – 90%
	Dimensions	255 × 234 × 42 mm

2.0 HDD Installation

This series of the product supports 1 SATA hard drive. Please make sure that the device is powered off before the installation. The pictures of the installation are for reference only.

1. Loosen the screws to open the cover.
2. Place the HDD onto the bottom of the machine.
3. Turn over the machine and secure the HDD with the screws.
4. Connect the power and data cables.

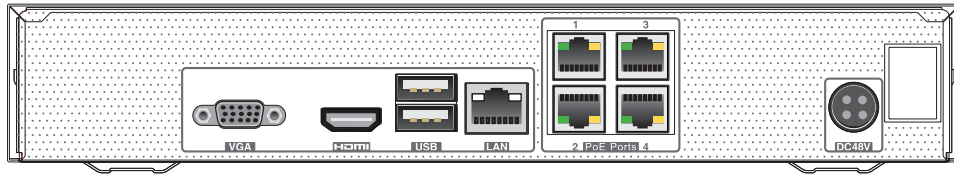


5. Install back the cover and secure it with the screws.

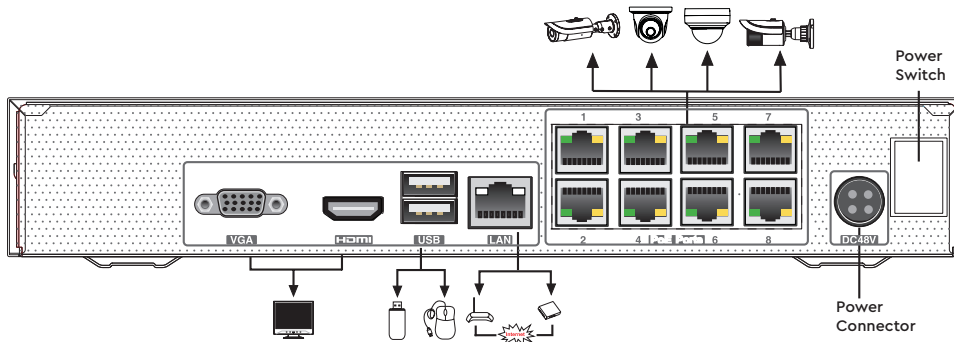
Note: Please check the inside structure of the device and make sure that the cables are connected well before installing the cover back. Please format the HDD before using.

3.0 Rear Panel Instruction

The interfaces of the rear panel are for reference only.



Rear panel for WONVR14P5



Rear Panel for WONVR18P5

Name	Description
VGA	Connector for VGA output
HDMI	Connector for HDMI output
USB	Connectors for USB devices
LAN	RJ 45 Ethernet port
PoE Ports	4/8 PoE network ports; connect to PoE IP cameras
DC48V	Connector for power input

4.0 Start Up and Shut Down

Startup

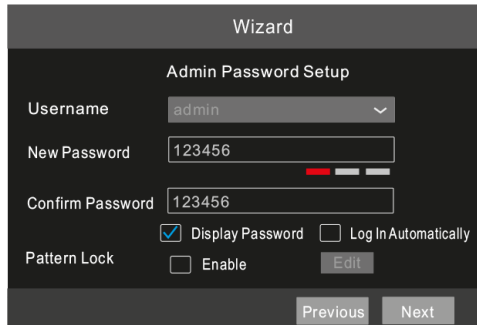
1. Connect the monitor and the power.
2. The device will boot and the power indicator will display blue.
3. A wizard window will pop up.

Shutdown

Click "Start" and then select "Shutdown" icon. This will bring up a shutdown window. The device will shut down by clicking "OK" button. Then disconnect the power.

5.0 Login and Disk Settings

5.1 Login



The screenshot shows a 'Wizard' window titled 'Admin Password Setup'. It contains the following fields and options:

- Username:** A dropdown menu with 'admin' selected.
- New Password:** A text input field containing '123456'. To the right of the field is a strength indicator with a red bar and two grey bars.
- Confirm Password:** A text input field containing '123456'.
- Display Password:** A checked checkbox.
- Log In Automatically:** An unchecked checkbox.
- Pattern Lock:** An unchecked checkbox with an 'Enable' button next to it.
- Edit:** A button located below the 'Enable' checkbox.
- Navigation:** 'Previous' and 'Next' buttons at the bottom of the window.

You must configure the wizard window if you start the NVR for the first time. Choose the language and read the privacy statement. Then set the data, time and zone as needed. After that, set the login password.

The default username is admin and the default password of admin is 123456. Set your own password or use the default one when you use the wizard for the first time. Enable pattern lock and click "Edit" to set the pattern lock. Then set security questions and answers. It is important for you to remember these answers, or you will not be able to reset your password. Click "Next" to continue.

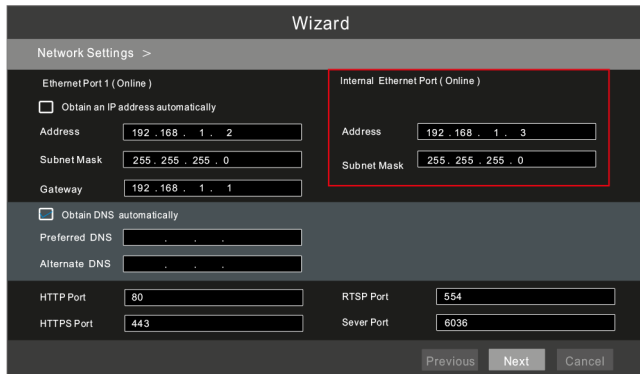
5.2 Disk Settings

You can view the disk number, disk capacity of the NVR and serial number, Read/Write status of the disk. Click "Format" to format the disk. Click "Next" to continue.

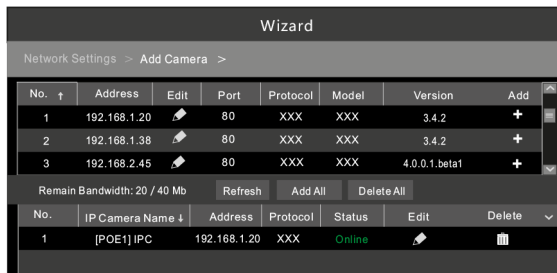
6.0 Configurations and Connections


6.1 Network Configuration & Adding IP Camera

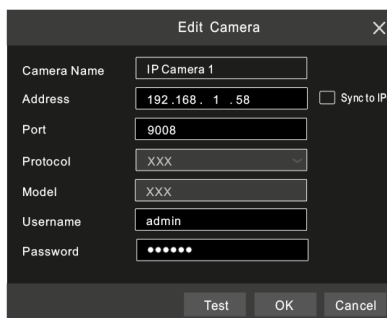
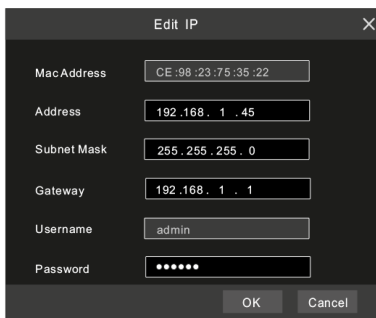
1. Enter IP address, subnet mask, gateway, etc. If using DHCP, please enable DHCP in both the NVR and the router.
2. Enter HTTP port (the default value is 80) and server port (the default port is 6036).
3. The internal ethernet port is the port which connects all the PoE ports with the NVR system. The PoE ports are available if the internal ethernet port is online, if it is offline, all the PoE ports will be unavailable.

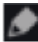
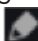


4. Add Camera. Click "Next" to go to the following interface.



Click "Refresh" to refresh the list of online IP cameras which are in the same local network with the NVR. Click + to add the searched camera. Click "Add All" to add all the cameras in the list. Click  to delete the added camera. Click "Delete All" to delete all the added cameras.

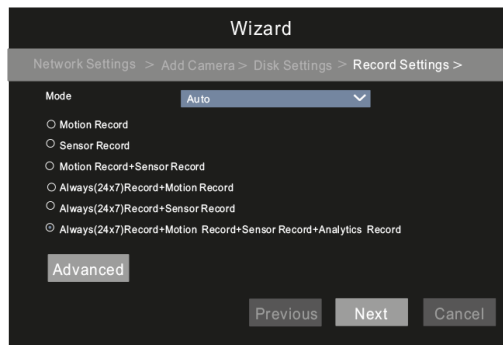


5. Click  to edit an IP camera as shown on the above left. Enter the new IP address, subnet mask, gateway, username and password of the camera. Click "OK" to save the settings. Click  to edit the added camera as shown on the above right. Enter the new camera name, IP address, port, username and the password of the camera. You can click "Test" to test the effectiveness of the input information. Click "OK" to save the settings. You can change the IP camera name only when the added camera is online. Click "Next" to continue.

7.0 Record Settings

There are two record modes: auto and manual.

Auto Mode: Select one auto mode in the interface as shown below and then click "Next" to save the settings. Click "Advanced" to self-define a record mode.

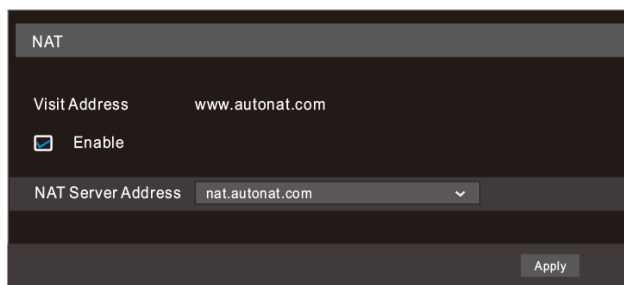


Manual Mode: Set the "Sensor Record", "Motion Record", "Analytics Record" and "Schedule Record" of each camera. Please enable the record as needed. Click "Next" to continue.

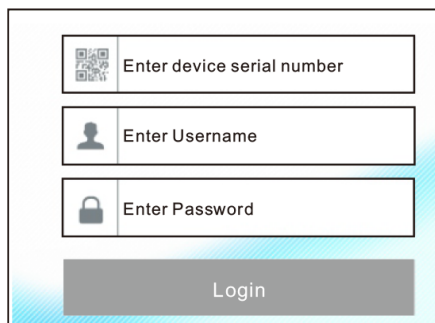
You can enable the NAT function in the interface or set it in the network configuration after exiting the wizard. You can scan the QR code through the mobile surveillance APP available for iOS or Android to easily view your cameras.

Web Browser Access Through NAT Function


Go to Start → Settings → Network → NAT tab. Enable NAT and select the NAT Server Address. Click "Apply" to save the parameters.



Enter www.autonat.com in the address bar of your browser and then press enter to go to the following interface. If you are the first time to access the NAT, you shall download and install the plug-in according to the popup tips. After that, re-open your web browser and enter the above-mentioned address. Then the login box will appear. Enter the device serial number, username and password.



Device Serial Number:

Click  on the menu bar at the bottom of the live interface to check the serial number or go to Start → Settings → Network → Network Status to check the serial number of the NVR).



Username:

The username of the NVR. The default username is admin.

Password:

The password of the NVR. The password is set by yourself when you configure the wizard for the first time.

9.1 Manual Recording

Before recording, please install and format a HDD. In the live interface you can see the menu toolbar. Click  button to start recording. Click it again to stop recording. You can also click  to check the status of the recording.





9.2 Playback

Instant Playback

Click "Instant Playback" in the right-click menu of the camera's preview window to select or drag the playback progress bar to change the playback time to play back the record.

General Playback

Click  on the tool bar at the bottom of the live preview interface or click Start → Playback to go to the playback interface as shown below. You can also add the playback cameras manually. Click  in the playback window to pop up the "Add Camera" window. Check the cameras in the window and then click "Add" to add playback camera. The record files of the added playback camera will be played in the playback interface.



Sales +44(0)1707 330541

Enquiries sales@genieproducts.co.uk

Website www.genieproducts.co.uk

genie