

8 Channel H.265 Smart Management Terminal for AI Applications Facial Recognition/Temperature/ Mask Detection with 1HDD Bay

WNVR18P5SM



Quick Start Guide

Please read these instructions carefully before operating the unit
and keep for further reference.

genie

Please read this instruction carefully before operating the product and keep it for further reference. All examples and pictures used here are for reference only. The contents of this manual are subject to change without notice.

CAUTION:

- Please check the device and the accessories after getting the device. If there are any damages, shortages or defects, please contact your dealer immediately.

1.0 Introduction.....	4
1.1 Product Features.....	4
1.2 Product Dimensions	4
1.3 Specification.....	5
1.3 Specification.....	6
2.0 HDD Installation	7
3.0 Rear Panel Instruction.....	8
4.0 Start Up and Shut Down.....	9
5.0 Login and Disk Settings.....	10
5.1 Product Features	10
5.2 Disk Settings.....	10
6.0 Network Configuration & Add Devices	11
6.1 Network Configuration	11
6.2 Adding Cameras	11
7.0 Record Settings.....	12
8.0 NAT.....	13
9.0 People Management.....	14
10.0 Live Display	15
11.0 Attendance Settings, Search and Smart Search	16
11.1 Attendance Settings and Search.....	16
11.2 Attendance Settings and Search	16

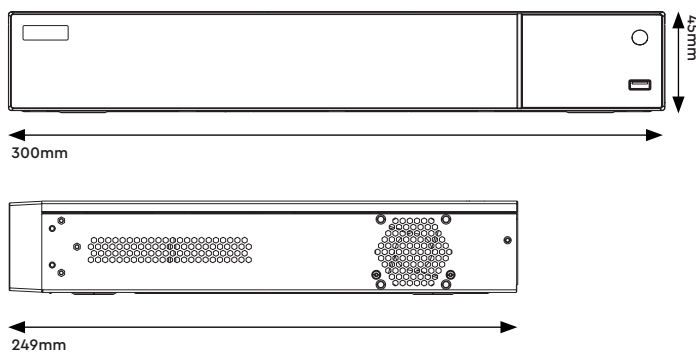
1.0 Introduction

The Genie WNVR18P5SM is specifically designed and developed for AI application management, like body temperature measurement, time attendance, access control and flow control. It supports real-time face capture, temperature display and alarm out, statistics, video preview, search and playback.

1.1 Product Features

- Real-time display of all abnormal data, including abnormal temperature, mask off, block list, etc.
- Real-time display of face snapshots, body temperature and human body snapshots
- Real-time alarm for abnormal temperature and non-mask detection
- Precise face recognition with masks
- Real-time personnel information display, including name, area, temperature, mask on/off, company, etc.
- Statistics of abnormal temperature and nonmask detection in recent 24 hours or 7 days
- Statistics of abnormal attendance in recent 24 hours or 7 days
- Statistics of the people information, including staff, allow list, block list, VIP, stranger and staff counts
- Personnel records search, including the identity, detected time, temperature, location, etc.
- Statistics of people entering or exiting facilitate people flow control
- Face greeting view and settings via Web client
- Up to 10TB capacity for each HDD
- 4K ultra-high definition output
- Supports 8 CH 8MP/ 6MP/5MP/4MP/3MP/ 1080p/1280×1024/960p/720p/960H/D1/CIF IP video input
- Standard H.265 high profile compression format to get high-quality video at much lower bit rate
- Intuitive and user-friendly Graphic User Interface (GUI), Windows style operation by mouse
- Immix and Sentinel platforms supported – running firmware 1.1.0 or later

1.2 Product Dimensions



1.3 Specification

	Model	WNVR18P5SM
System	OS	Embedded Linux
Video	IP Video Input	8CH IP video input (including IP Panel, thermal camera, IPC, etc.)
	Incoming / Outgoing Bandwidth	80Mbps
	Output	HDMI x 1 : 3840×2160 @60fps / 3840×2160 @ 30fps / 1920×1080 / 1280×1024 / 1024×768 VGA 1 : 1920×1080 / 1280×1024 / 1024×768
	Resolution	8MP / 6MP / 5MP / 4MP / 3MP / 1080p / 1280×1024 / 960p / 720p / 960H / D1 / CIF
	Compression	H265+/H.265/H.264
Audio	Input	8 CH IPC/IP Panel audio input
	Output	RCA x1
	Two-Way Audio	RCA x1
	Compression	G.711 (A/U)
Record	Record Stream	Dual stream recording
	Resolution	8MP / 6MP / 5MP / 4MP / 3MP / 1080p / 1280×1024 / 960p / 720p / 960H / D1 / CIF
	Frame Rate	NTSC: 30fps, PAL: 25fps
	Mode	Manual, Timer, Motion, Sensor, Smart events
AI	AI Device Access	8 CH
	Face Picture Database	4 groups: attendance group/allow list/block list/VIP, 20,000 Face Pictures
	Face Picture Search	Search and playback by time/camera/event/temperature/mask
	Face Picture Adding	Add face pictures through App, Web and external import
	External Face Picture Enrolment	Resolution: 128×128 ~ 1920×1080 Size: ≤ 150KB Format : jpg&jpeg
	Event	Allow list/block list/VIP/temperature exception alarm
	Statistics	Statistical information display by day, week, month, quarter as well as customised time period in the bar graph or pie chart
Functions	Attendance	Rule: By week/month/customisation
	Access Control	Trigger Type: Staff/VIP/Allow List
	Temperature Measurement	Unit: Fahrenheit / Celsius Statistics: Real-time Statistics/ Historical Statistics
	Flow Control	People Flow Control: Yes
Mobile Device	OS	iOS, Android
Storage	HDD	SATA x1, max 8TB per HDD
Playback	Playback	Maximum 8CH (Simultaneous)
	Search	Time slice / Time / Event / Tag search
	Smart Search	Highlighted colour to display the camera record in a certain period of time, different colours refers to different record events.
	Function	Play, Pause, FF, FB, Digital zoom, etc.
	Decoding Capability	1CH 8MP / 4CH 1080p (Live View/Playback)
Alarm	Mode	Motion Detection, Sensor Detection, AI Event, Temperature Exception Alarm, Mask Off
	Linkage	Record, Alarm Out, Pop-up Window, Email, Buzzer, App push, etc.
Network	Interface	RJ45 1000Mbps x 1
	Protocol	TCP / IP, PPPoE, DHCP, DNS, DDNS, UPnP, NTP, SMTP
	PoE Port	RJ45 × 8 (IEEE802.3af, output power: ≤80W)
Remote Monitoring	Immix	Compatible with Immix via RTSP only (2-way audio not supported)
	Sentinel	Yes, Firmware 1.1.0 or later

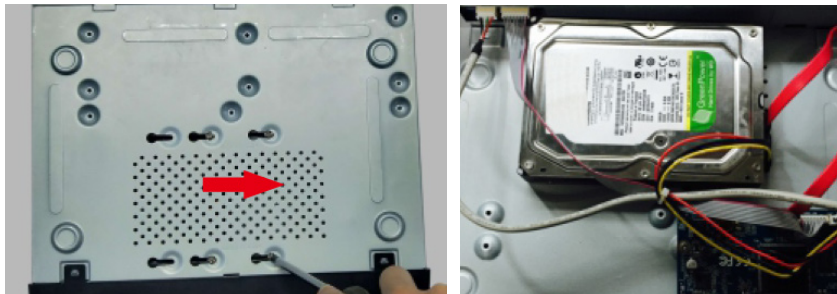
1.3 Specification

	Model	WNVR18P5SM
Backup	Local Backup	USB stick, USB mobile HDD
	Network Backup	Yes
Port	RS485	Yes (Full-duplex), Connect to PTZ or keyboard
	USB	USB 2.0 × 1, USB 3.0 × 1
	Remote Controller	Optional
Others	Power Supply	DC48V/2.5A
	Consumption	≤ 15W (Without HDD and PoE power supply)
	Working Environment	-10~50°C, 10%~90% (Humidity)
	Dimensions	300 × 249 × 45 mm

2.0 HDD Installation

This series of the product supports 1 SATA hard drive. Please make sure that the device is powered off before the installation. The pictures of the installation are for reference only.

1. Loosen the screws to open the cover.
2. Screw the screws into the HDD but do not tighten them.
3. Place the HDD onto the bottom of the machine.
4. Turn over the machine and secure the HDD with the screws.
5. Connect the power and data cables.

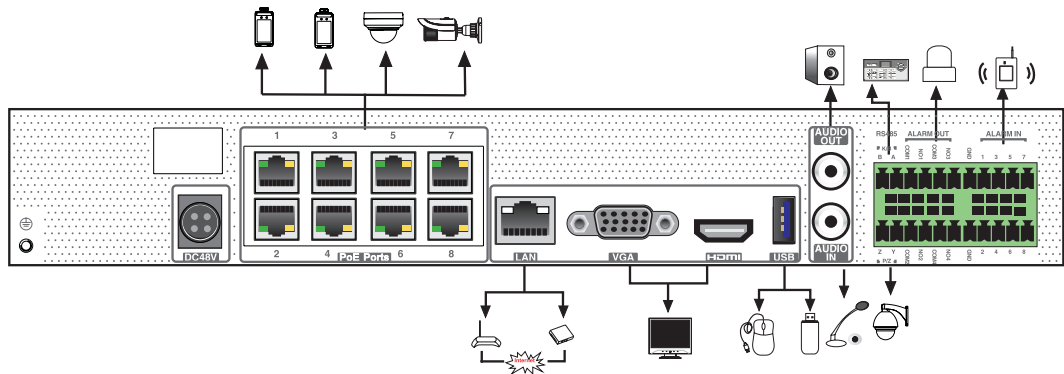


6. Install back the cover and secure it with the screws.

Note: Please check the inside structure of the device and make sure that the cables are connected well before installing the cover back. Please format the HDD before using.

3.0 Rear Panel Instruction

The interfaces of the rear panel are for reference only.



Name	Description
DC48V	Connector for power input
PoE Ports	PoE network ports, connect to PoE IP camera
LAN	Network port
VGA	Connect to monitor
HDMI	Connect to high definition display device
USB	Connect to USB storage device or USB mouse
AUDIO OUT	Audio output
AUDIO IN	Audio input
P/Z	Connector for a PTZ device. Y is TX+, Z is TX
K/B	Connector for a keyboard. A is TX+, B is TX
GND & ALARM IN	Connectors for alarm input devices, like sensors
ALARM OUT	Relay output: connectors for external alarm output devices

4.0 Start Up and Shut Down

Startup

1. Connect the monitor and the power.
2. The device will boot and the power indicator will display blue.
3. A wizard window will pop up.

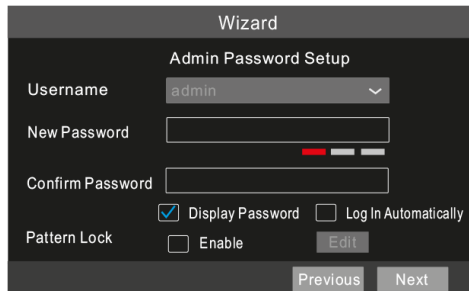
Shutdown

Click "Start" and then select "Shutdown" icon. This will bring up a shutdown window. The device will shut down by clicking "OK" button. Then disconnect the power.

5.0 Login and Disk Settings

5.1 Product Features

You must configure the wizard if you start the NVR for the first time. Choose the language and read the privacy statement. Then set the data, time and zone as needed. After that, set the login password.



The screenshot shows the 'Wizard' interface for 'Admin Password Setup'. It features a dark background with white text. The 'Username' field is a dropdown menu set to 'admin'. Below it are two password input fields: 'New Password' and 'Confirm Password'. The 'New Password' field has a red strength indicator. There are two checkboxes: 'Display Password' (checked) and 'Log In Automatically' (unchecked). At the bottom, there is a 'Pattern Lock' section with an 'Enable' checkbox and an 'Edit' button. Navigation buttons 'Previous' and 'Next' are at the very bottom.

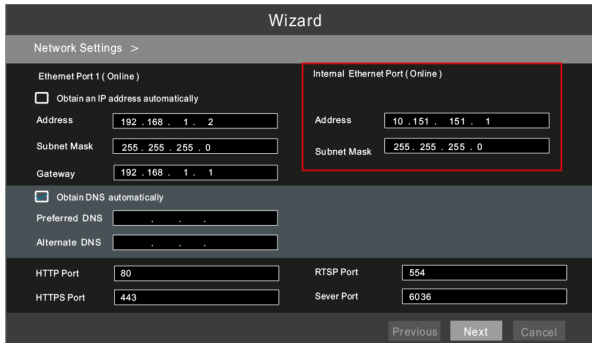
The default username is admin. Set your own password when you use the wizard for the first time. Enable pattern lock and click "Edit" to set the pattern lock. Then set security questions and answers. It is important for you to remember these answers, or you will not be able to reset your password. Click "Next" to continue.

5.2 Disk Settings

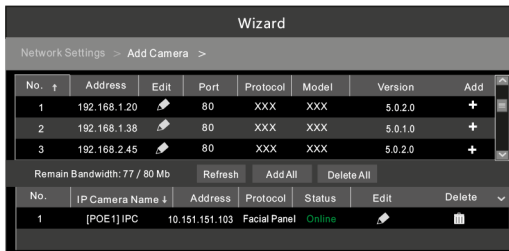
You can view the disk number, disk capacity of the NVR and serial number, Read/Write status of the disk. Click "Format" to format the disk. Click "Next" to continue.

6.1 Network Configuration

1. Enter IP address, subnet mask, gateway, etc. If using DHCP, please enable DHCP in both the NVR and the router.
2. Enter HTTP port (the default value is 80) and server port (the default port is 6036).
3. The internal ethernet port is the port which connects all the PoE ports with the NVR system. The PoE ports are available if the internal ethernet port is online, if it is offline, all the PoE ports will be unavailable.



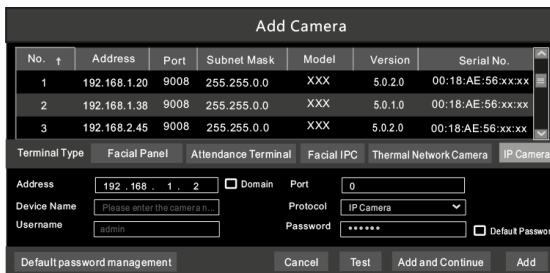
4. Add Camera. Click "Next" to go to the following interface.



Click "Refresh" to refresh the list of online IP cameras/panels which are in the same local network with the device. Click + to add the searched cameras/panels. Click "Add All" to add all the devices in the list.

6.2 Adding Cameras

Click Start → Settings → Camera to go to the "Edit Camera" interface. Click "Add" to add cameras.



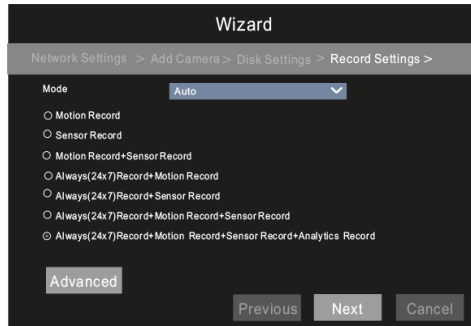
Select a IP camera/panel and then choose the terminal type as needed. Then enter device name and password and click "Add" to add devices. Please select the terminal type according to the actual usage of your device.

IP Panel: Facial panel or attendance terminal is suggested.
 Facial IPC: The IPC which supports face recognition can choose this one.

7.0 Record Settings

Two record modes: auto and manual.

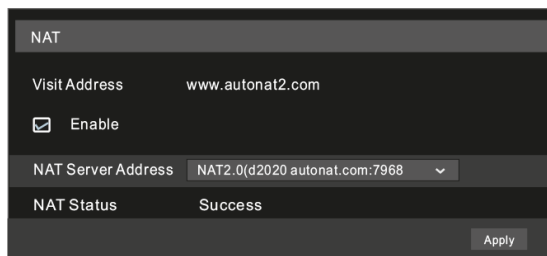
Auto Mode: Select one auto mode in the interface as shown below and then click "Next" to save the settings. Click "Advanced" to self-define a record mode.



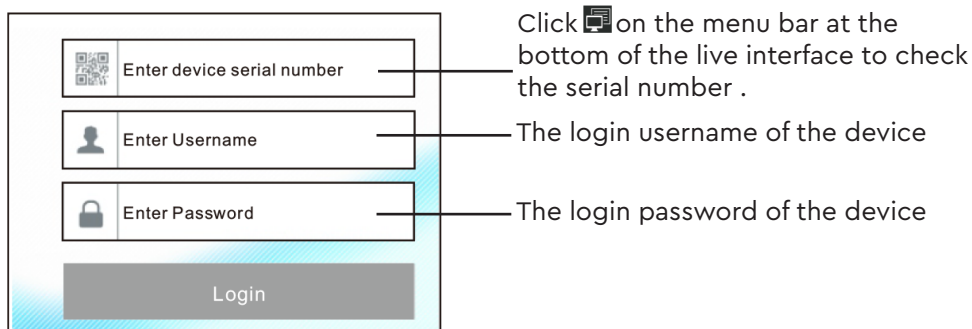
Manual: Set the "Sensor Record", "Motion Record", "Analytics Record" and "Schedule Record" of each camera. Please enable the record as needed. Click "Next" to continue.

8.0 NAT

You can enable the NAT function in the interface or set it in the network configuration after exiting the wizard. You can scan the QR code through the mobile surveillance App for iOS or Android to easily view your cameras.



Enter www.autonat2.com in the address bar of your browser and then press enter to go to the following interface. If you are the first time to access the NAT, you shall download and install the plug-in according to the popup tips. After that, the login box will be displayed.



9.0 People Management

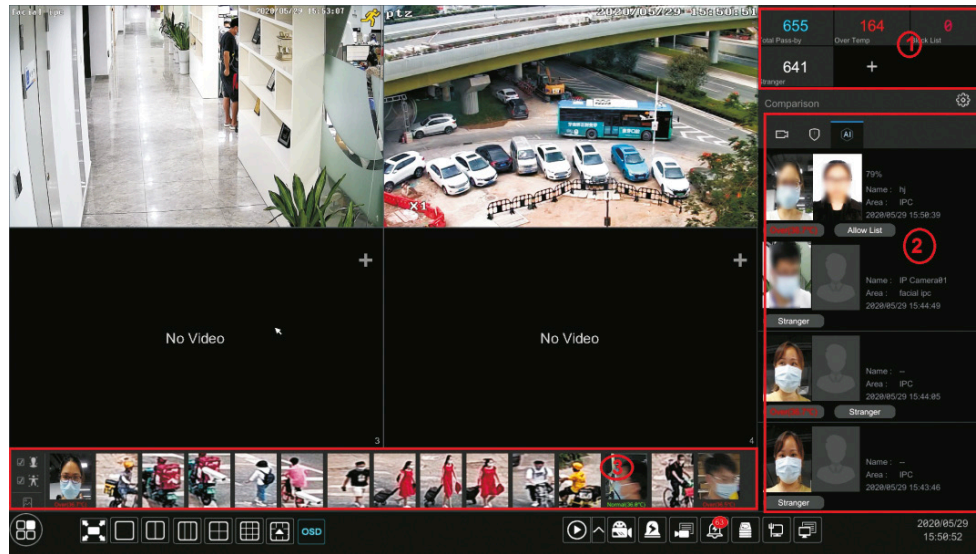
Click Start → People Management to go to the people management interface.

1. Click and then set the company name, department and position of people.
2. Add face pictures and relevant information for each group. Select a group and then click "Add" to go to the following interface. Click "Select face" to choose a face from snapshot gallery or external faces. Fill out other information and then click "Entry".

Multiple face pictures can be added from "External faces" too. Click "Export" to export a template file and then edit the personal information file as follows. Put pictures and the file of personal information under the same directory of your mobile storage device. Select this directory and click "Full Entry" to add.

	A	B	C	D	E	F	G	H
1	(01)Name	(02)Sex	(03)Birthday	(04) ID Type	(05) ID Number	(08)Mobile	(12) Image name	(13)No.
2	Helen	1	1989/1/1	ID Card	12121211212	137xxxxxxx	Helen. jpg	120
3	David	0	1998/1/1	ID Card	334455662	136xxxxxxx	David. jpg	119

10.0 Live Display




Area 1: Real-time statistical information display

Area 2: Real-time face comparison result display, including face match, body temperature, mask status, area, etc.

Area 3: Real-time snapshot display, including face snapshots, human body snapshots, temperature display, etc.

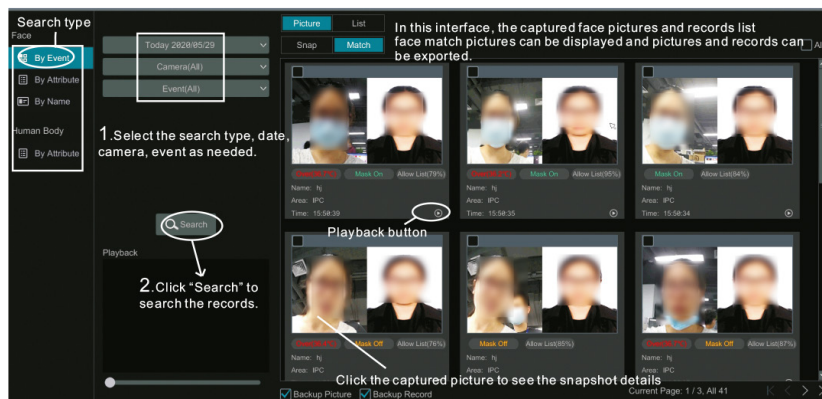
11.0 Attendance Settings, Search and Smart Search

11.1 Attendance Settings and Search

1. Click Start → Attendance → Rule Settings to go to the rule setting interface. Set the working start and end time, "Late" and "leave early" rules, working day and holiday. Click a date on the calendar to switch between working day and holiday. Then click "Save" to save the settings.
2. Leave and Business Trip Settings: Go to the Leave and Business Trip interface and then click "Add" to pop up a window. Click "Add" to add the person who want to ask for leave or go on a business trip and then set the start and end time.
3. Attendance Search: Set the filter condition, like attendance date, attendance area, etc. Then click "Search" to search the attendance information of staff. Select a person click  to view the detailed attendance information of this person.

11.2 Attendance Settings and Search

Click Start → Search and Backup → Smart Search to go to the following interface



Sales +44(0)1707 330541

Enquiries sales@genieproducts.co.uk

Website www.genieproducts.co.uk

genie