

genie



The Xpert Range

The Xpert range of cameras and recorders from Genie all utilise state of the art technology, and will provide all professional installers with an array of useful and important features and functions, which will be required for full specification projects.

With the aide of these essential features and functions shown below, it will be possible to achieve superb results, both live and recorded, for all high end CCTV applications. If any installers or integrators are unaware of the extent of the capabilities of this 'Xpert' range, Genie can assist with relevant training and guidance.



DC12V / PoE



2.8, 2.8~12, 3.3~12 and 7~22mm lens options



IP67 ingress protection



Up to 4K resolution



Smart analytics



True Day & Night



Up to 100m IR night view distance (Depending on model)



Remote monitoring on smart phone and tablets



WDR



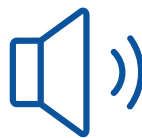
Defog



Plate recognition



Motion detection



Audio



Supports simultaneous online monitoring for multiple users



Micro SD card storage






LPR CAMERAS






WIPX2LBVLPR

Specification / Model		
Camera	Image Sensor	1 / 2.8" CMOS
	Image Size	1920 × 1080
	Electronic Shutter	1 / 25 s ~ 1 / 100000 s
	Iris Type	DC Iris
	Minimum Illumination	0.0026 Lux @ F1.2, AGC ON, 0 Lux with IR 0.005 Lux @ F1.6, AGC ON, 0 Lux with IR
	Lens	Motorised zoom lens, 7-22mm @ F1.4
	Lens Mount	Ø14
	Field of View	Horizontal: 44°~17.6°
	Wide Dynamic Range	120dB
	BLC	Yes
	HLC	Yes
	Defog	Yes
	Digital NR	3D DNR
	Angle Adjustment	Pan: 0°~360°, Tilt: 0°~90°, Rotation: 0°~360°
Image	Video Compression	Smart H.265 / H.265+ / H.265 / Smart H.264 / H.264+ / H.264 / MJPEG
	Compression Standard	H.264: Baseline Profile / Main Profile / High Profile
	Resolution	1080p (1920 × 1080), 720p (1280 × 720), D1, CIF, 480 × 240
	Main Stream	60Hz :1080p / 720p (1~30fps), 50Hz :1080p / 720p (1~25fps), HFR Mode : 1080p / 720p (1~60fps / 50fps)
	Sub Stream	60Hz : 720p / D1 / CIF (1~30fps), 50Hz: 720p / D1 / CIF (1~25fps)
	Third Stream	60Hz : D1 / CIF / 480 × 240 (1~30fps), 50Hz : D1 / CIF / 480 × 240 (1~25fps)
	Bit Rate	64 Kbps ~ 6 Mbps
	Bit Rate Type	VBR / CBR
	Audio Compression	G711A/U
	Image Settings	ROI, Saturation, Brightness, Chroma, Contrast, Wide Dynamic, Sharpen, NR, etc. Adjustable through client software or web browser
	ROI	Each ROI to be configured separately
Functions	Remote Monitoring	Web browsing, CMS remote control
	Online Connection	Supports simultaneous monitoring for up to 10 users. Supports multi-stream real time transmission
	Network Protocol	UDP, IPv4, IPv6, DHCP, NTP, RTSP, PPPoE, DDNS, SMTP, FTP, SNMP, 802.1x, UPnP, HTTP, HTTPS, QoS
	Interface Protocol	Onvif compatible
	Intelligent Analytics	License plate recognition, video abnormality detection (video tampering, scene change)
	Storage	Network remote storage, Micro SD card storage
	Smart Alarm	Motion detection, Sensor alarm, SD card full, SD card error, IP address conflict, Network disconnection
	General Function	Watermark, IP address filtering, video mask, heartbeat, password protection, non-photosensitive switch, image distortion correction
	PoE	Yes, (802.3af)
	IR Distance	50~70m
LPR	Snapshot	Overview and cutout of plate for picture
	White List	10000
	Capture Speed Range	Up to 70km/h (43mph)
Interface	Network	RJ45
	Video Output	No
	Audio	1CH audio input and output
	Alarm	1CH alarm input, 1CH alarm output
	Storage	Built-in Micro SD card slot, up to 128GB
	Hardware Reset	Yes
Others	Ingress Protection	IP67
	Power	DC12V / PoE, < 11W
	Operating Environment	-30 °C ~ 60°C (-22 °F~140°F) Humidity: Less than 95 % (Non-Condensing)



BULLET CAMERAS

Specification / Model		 WIPX4BVAF	 WIPX4BVAF722	 WIPX8BVAF5
Camera	Image Sensor	1 / 3" CMOS		1 / 2.8" CMOS
	Image Size	2592 × 1520		3840 × 2160
	Electronic Shutter	1 / 30 s ~ 1 / 100000 s		1 / 25 s ~ 1 / 100000 s
	Iris Type	DC Iris		
	Minimum Illumination	0.005 Lux @ F1.4, AGC ON, 0 Lux with IR, 0.0028 Lux @ F1.2, AGC ON, 0 Lux with IR		0.01 Lux @ F1.2, AGC ON, 0 Lux with IR 0.015 Lux @ F1.4, AGC ON, 0 Lux with IR
	Lens	2.8~12mm @ F1.4, motorised zoom lens	7~22mm @ F1.6, motorised zoom lens	
	Lens Mount	Ø14		
	Field of View	Horizontal field of view: 94.2°~29.8°	H: 42.5°~16.7°, V: 24.7°~9.4°, D: 48°~19°	H: 96°~32°, V: 64°~18.4°, D: 103.8°~36.5°
	Wide Dynamic Range	120dB		
	BLC	Yes		
	HLC	Yes		
	Defog	Yes		
	Digital NR	3D DNR		
	Angle Adjustment	Pan: 0°~360°, Tilt: 0°~90°, Rotation: 0°~360°		
Image	Video Compression	Smart H.265, H.265+, H.265, Smart H.264, H.264+, H.264, MJPEG		
	Compression Standard	H.264: Baseline Profile, Main Profile, High Profile		
	Resolution	4MP (2592 × 1520), 2K (2560 × 1440), 3MP (2304 × 1296), 1080p (1920 × 1080), 720p (1280 × 720), D1, CIF, 480 × 240	8MP (3840 × 2160), 6MP (3072 × 2048), 5MP (2592 × 1944), 4MP (2592 × 1520), 2K (2560 × 1440), 3MP (2304 × 1296), 1080p (1920 × 1080), 720p (1280 × 720), D1, CIF, 480 × 240	
	Main Stream	4MP, 2K, 3MP, 1080p, 720p (60Hz: 1~30fps, 50Hz: 1~25fps) HFR mode: 1080p, 720p (60Hz: 1~60fps, 50Hz: 1~50fps)	60Hz: 8MP, 6MP (1~20fps), 5MP, 4MP, 2K, 3MP, 1080p, 720p (1~30fps), 50Hz: 8MP, 6MP (1~20fps), 5MP, 4MP, 2K, 3MP, 1080p, 720p (1~25fps) HFR Mode: 1080p, 720p (60Hz: 1~60fps, 50Hz: 1~50fps)	
	Sub Stream	720p, D1, CIF (60Hz: 1~30fps, 50Hz: 1~25fps)		
	Third Stream	D1, CIF, 480 × 240 (60Hz: 1~30fps, 50Hz: 1~25fps)		
	Bit Rate	64 Kbps ~ 8 Mbps		64 Kbps ~ 12 Mbps
	Bit Rate Type	VBR / CBR		
	Audio Compression	G711A / U		
	Image Settings	ROI, Saturation, Brightness, Chroma, Contrast, Wide Dynamic, Sharpen, NR, etc. Adjustable through client software or web browser		
	ROI	Each ROI to be configured separately		
Functions	Remote Monitoring	Web browsing, CMS remote control		
	Online Connection	Supports simultaneous monitoring for up to 4 users. Supports multi-stream real time transmission		Supports simultaneous monitoring for up to 10 users. Supports multi-stream real time transmission
	Network Protocol	UDP, IPv4, IPv6, DHCP, NTP, RTSP, PPPoE, DDNS, SMTP, FTP, SNMP, HTTP, 802.1x, UPnP, HTTPs, QoS		
	Interface Protocol	Onvif compatible		
	Intelligent Analytics	Object abandoned / missing detection, Region entrance / exiting / intrusion detection (human / vehicle classification), Line crossing detection (human / vehicle classification), Video tampering detection, Scene change detection, Face recognition and face capture, Crowd density detection, Heat map, Human/vehicle counting, Human tracking	Line crossing, region entrance/exiting / intrusion (human / motor vehicle / non-motor vehicle classification), Line crossing human / motor vehicle / non-motor vehicle counting, Scene change, video blur and video colour cast detection, Face recognition and face capture, Crowd density detection, heat map, object abandoned / missing detection	
	Storage	Network remote storage, micro SD card storage		
	Smart Alarm	Motion detection, sensor alarm, SD card error, SD card full, IP address conflict, cable disconnection		
	General Function	Watermark, IP address filtering, video mask, heartbeat, password protection, non-photosensitive switch, image distortion correction		
	PoE	Yes, IEEE802.3af		
	IR Distance	50 ~ 70 m	70 ~ 100 m	50 ~ 70 m
	Interface	Network	RJ45	
Video Output		CVBS output (BNC x1)		
Audio		1CH audio input, 1CH audio output		
Alarm		1CH alarm input, 1CH alarm output		
Storage		Built-in micro SD card slot, up to 128GB	Built-in micro SD card slot, up to 256GB	
Hardware Reset		Yes		
Others	Ingress Protection	IP67		
	Power	DC12V / PoE, < 10W		DC12V / PoE, < 12W
	Operating Environment	- 30 °C ~ 60°C (-22°F~140°F) Humidity: Less than 95% (Non-condensing)		

DOME CAMERAS

Specification / Model		 WIPX4FD	 WIPX4VDVAF	 WIPX8VDVAF5
Camera	Image Sensor	1 / 3" CMOS		1 / 2.5" CMOS
	Image Size	2592 × 1520		3840 × 2160
	Electronic Shutter	1 / 30 s ~ 1 / 100000 s		1 / 25 s ~ 1 / 100000 s
	Iris Type	Fixed Iris	DC Iris	Fixed Iris
	Minimum Illumination	0.005 Lux @ F1.6, AGC ON, 0 Lux with IR 0.0028 Lux @ F1.2, AGC ON, 0 Lux with IR	0.0038 Lux @ F1.4, AGC ON, 0 Lux with IR 0.0028 Lux @ F1.2, AGC ON, 0 Lux with IR	0.024 Lux @ F1.2, AGC ON, 0 Lux with IR 0.068 Lux @ F2.0, AGC ON, 0 Lux with IR
	Lens	2.8 mm @ F1.6	2.8~12mm @ F1.4, motorised	3.3~12mm @ F1.4
	Lens Mount	M12	Φ14	
	Field of View	Horizontal: 100.4°, Vertical: 68°, Diagonal: 108	H: 94.2°~29.8°, V: 62.4°~17°, D: 102°~33.9°	Horizontal field of view : 97.5° ~ 38.5°
	Day & Night	ICR		ICR
	Wide Dynamic Range	120dB		
	BLC	Yes		
	HLC	Yes		
	Defog	Yes		
	Digital NR	3D DNR		
Angle Adjustment	Pan: 0°~360°, Tilt: 0°~70°, Rotation: 0°~350°	Pan: 0°~345°, Tilt: 0°~77°, Rotation: 0°~345°	Pan: 0°~360°, Tilt: 0°~77°, Rotation: 0°~360°	
Image	Video Compression	H.265 / H.264 / MJPEG	Smart H.265 / H.265+ / H.265 / Smart H.264 / H.264+ / H.264 / MJPEG	H.265+ / H.265 / H.264+ / H.264 / MJPEG
	Compression Standard	H.265 Main Profile @ Level 4.1 High Tier	H.264: Baseline Profile / Main Profile / High Profile	
	Resolution	1080p (1920 × 1080), 720p (1280 × 720), D1, CIF, 480 × 240	4MP (2592 × 1520), 2K (2560 × 1440), 3MP (2304 × 1296), 1080p (1920 × 1080), 720p (1280 × 720), D1, CIF, 480 × 240	8MP (3840 × 2160), 2K (2560 × 1440), 3MP (2304 × 1296), 1080p (1920 × 1080), 720p (1280 × 720), D1, CIF, 480 × 240
	Main Stream	60Hz : 1080p / 720p (1~30fps) 50Hz : 1080p / 720p (1~25fps)	4MP / 2K / 3MP / 1080p / 720p (60Hz : 1 ~ 30fps, 50Hz: 1~25fps) HFR mode: 1080p / 720p (60Hz : 1 ~ 60fps, 50Hz: 1~50fps)	60Hz : 8MP/2K/3MP/1080p / 720p (1~30fps) 50Hz : 8MP/2K/3MP/1080p/ 720p (1~25fps)
	Sub Stream	60Hz : D1 / CIF / 480 × 240 (1~30fps) 50Hz : D1 / CIF / 480 × 240 (1~25fps)	720p / D1 / CIF / 480 × 240 (60Hz : 1 ~ 30fps, 50Hz: 1~25fps)	60Hz : 1080p (1~5fps) / 720p (1~10fps) / D1 (1~30fps) 50Hz: 1080p (1~25fps) / 720p (1~25fps) /D1 (1~25fps)
	Third Stream	-	D1 / CIF / 480 × 240 (60Hz : 1 ~ 30fps, 50Hz: 1~25fps)	60Hz : 720p / D1 / CIF / 480 × 240 (1~30fps) 50Hz: 720p / D1 / CIF / 480 × 240 (1~25fps)
	Bit Rate	64 Kbps ~ 6 Mbps	64 Kbps ~ 8 Mbps	128 Kbps ~ 12 Mbps
	Bit Rate Type	VBR / CBR		
	Audio Compression	G711A / U		
	Image Settings	ROI, Saturation, Brightness, Chroma, Contrast, Wide Dynamic, Sharpen, NR, etc. Adjustable through client software or web browser		
	ROI	Each ROI to be configured separately		
Functions	Remote Monitoring	Web browsing, CMS remote control		
	Online Connection	Supports simultaneous monitoring for up to 10 users. Supports multi-stream real time transmission		
	Network Protocol	UDP, IPv4, IPv6, DHCP, NTP, RTSP, PPPoE, DDNS, SMTP, FTP, SNMP, HTTP, 802.1x, UPnP, HTTPs, QoS		
	Interface Protocol	Onvif compatible		
	Intelligent Analytics	Line crossing, Region entrance / exiting / intrusion (human / motor vehicle / non-motor vehicle classification), Line crossing human / motor vehicle / non-motor vehicle counting, Scene change, video blur and video colour cast detection, Face recognition and face capture	Line crossing, Region entrance / exiting / intrusion (human / motor vehicle / non-motor vehicle classification), Video blur and video colour cast detection, Face recognition and face capture	Face recognition and face capture
	Storage	Network remote storage, Micro SD card storage		
	Smart Alarm	Motion detection, SD card error, SD card full	Motion detection, Sensor detection, SD card error, SD card full, IP conflict, cable disconnection	
	General Function	Watermark, IP address filtering, video mask, heartbeat, illegal login lock	Watermark, IP address filtering, video mask, heartbeat, password protection, image distortion correction, etc.	
	PoE	Yes, IEEE802.3af		Yes
	IR Distance	10 ~ 20 m	30~50m	20~30m
Interface	Network	RJ45		
	Video Output	No	CVBS Output (BNC x 1)	CVBS Output (BNC x 1), Built-in CVBS output x 1
	Audio	1CH audio input, 1CH audio output, 1CH built-in MIC		Audio input x 1, audio output x 1
	Alarm	No	1CH alarm input, 1CH alarm output	Alarm input x 1, alarm output x 1
	Storage	Built-in micro SD card slot, up to 128GB		
	Hardware Reset	Yes		
	Others	Ingress Protection	IP66	IP67 & IK10
Power	DC12V / PoE, < 6W	DC12V / PoE, < 8W	DC12V / PoE, < 7W	
Operating Environment	-30 °C ~ 60 °C (-22 °F~140°F) Humidity: Less than 95 % (Non-Condensing)			

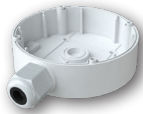
EYEBALL CAMERAS

Specification / Model		 WIPX4EBVAF	 WIPX8EBVAF5
Camera	Image Sensor	1 / 3" CMOS	1 / 2.8" CMOS
	Image Size	2592 × 1520	3840 × 2160
	Electronic Shutter	1 / 30 s ~ 1 / 100000 s	1 / 25 s ~ 1 / 100000 s
	Iris Type	DC Iris	
	Minimum Illumination	0.0038 Lux @ F1.4, AGC ON, 0 Lux with IR 0.0028 Lux @ F1.2, AGC ON, 0 Lux with IR	0.01 Lux @ F1.2, AGC ON, 0 Lux with IR 0.015 Lux @ F1.4, AGC ON, 0 Lux with IR
	Lens	2.8~12mm @ F1.4, motorised	
	Lens Mount	Ø14	
	Field of View	Horizontal: 94.2°~29.8° Vertical: 62.4°~17, Diagonal: 102°~33.9°	Horizontal: 96°~32°, Vertical: 64°~18.4° Diagonal: 103.8°~36.5°
	Day & Night	ICR	
	Wide Dynamic Range	120dB	
	BLC	Yes	
	HLC	Yes	
	Defog	Yes	
	Digital NR	3D DNR	
Angle Adjustment	Pan: 0°~360°, Tilt: 0°~80°, Rotation: 0°~360°		
Image	Video Compression	Smart H.265, H.265+, H.265, Smart H.264, H.264+, H.264, MJPEG	
	Compression Standard	H.265: Baseline Profile, Main Profile, High Profile	
	Resolution	4MP (2592 × 1520), 2K (2560 × 1440), 3MP (2304 × 1296), 1080p (1920 × 1080), 720p (1280 × 720), D1, CIF, 480 × 240	8MP (3840 × 2160), 6MP (3072 × 2048), 5MP (2592 × 1944), 4MP (2592 × 1520), 2K (2560 × 1440), 3MP (2304 × 1296), 1080p (1920 × 1080), 720p (1280 × 720), D1, CIF, 480 × 240
	Main Stream	4MP, 2K, 3MP, 1080p, 720p (60Hz: 1 ~ 30fps, 50Hz: 1~25fps) HFR mode: 1080p, 720p (60Hz: 1 ~ 60fps, 50Hz: 1~50fps)	60Hz: 8MP, 6MP (1~20fps), 5MP, 4MP, 2K, 3MP, 1080p, 720p (1~30fps) 50Hz: 8MP, 6MP (1~20fps), 5MP, 4MP, 2K, 3MP, 1080p, 720p (1~25fps) HFR Mode: 1080p, 720p (60Hz: 1~60fps, 50Hz: 1~50fps)
	Sub Stream	720p, D1, CIF, 480 × 240 (60Hz: 1~30fps, 50Hz: 1~25fps)	720p, D1, CIF, 480 × 240 (60Hz: 1~30fps, 50Hz: 1~25fps)
	Third Stream	D1, CIF, 480 × 240 (60Hz: 1~30fps, 50Hz: 1~25fps)	D1, CIF, 480 × 240 (60Hz: 1~30fps, 50Hz: 1~25fps)
	Bit Rate	64 Kbps ~ 8 Mbps	64 Kbps ~ 12 Mbps
	Bit Rate Type	VBR / CBR	VBR / CBR
	Audio Compression	G711A / U	G711A / U
	Image Settings	ROI, Saturation, Brightness, Chroma, Contrast, Wide Dynamic, Sharpen, NR, etc. Adjustable through client software or web browser	
	ROI	Each ROI to be configured separately	
Functions	Remote Monitoring	Web browsing, CMS remote control	
	Online Connection	Supports simultaneous monitoring for up to 10 users. Supports multi-stream real time transmission	
	Network Protocol	UDP, IPv4, IPv6, DHCP, NTP, RTSP, PPPoE, DDNS, SMTP, FTP, SNMP, 802.1x, UPnP, HTTPs, QoS	
	Interface Protocol	Onvif compatible	
	Intelligent Analytics	Line crossing, Region entrance / exiting / intrusion (human / motor vehicle / non-motor vehicle classification), Line crossing human / motor vehicle / non-motor vehicle counting scene change, Video blur and video colour cast detection, Face recognition and face capture	
	Storage	Network remote storage, Micro SD card storage	
	Smart Alarm	Motion detection, SD card error, SD card full	
	General Function	Watermark, IP address filtering, video mask, heartbeat, password protection	Watermark, IP address filtering, video mask, heartbeat, password protection, image distortion correction, etc.
	PoE	Yes (IEEE802.3af)	
	IR Distance	30 ~ 50 m	
Interface	Network	RJ45	
	Audio	1CH audio input, 1CH built-in MIC	
	Storage	Built-in micro SD card slot, up to 128GB	
	Hardware Reset	Yes	
Others	Ingress Protection	IP67	
	Power	DC12V / PoE, < 9.5W	
	Operating Environment	- 30 °C ~ 60°C (-22°F~140°F) Humidity: Less than 95% (Non-condensing)	

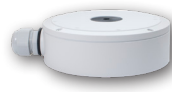
OPTIONAL ACCESSORIES



WIPBBV
Junction Box for Varifocal
Bullet Cameras - White



WJBVDV
Junction Box for VDV
Cameras - White



WJBMPWP
Water Resistant Junction
Box - White



WJBBVWP
Water Resistant Junction
Box - White



WJBBV
Junction Box for Varifocal
and Auto Focus Eyeball
Cameras - White



WBEBVW
Wall Bracket for Eyeball
Cameras - White



WIPSPM
Surface Mount Wall
Bracket (Junction Box NOT
included) - White



WBDVWP
Water Resistant Wall
Bracket for VDV and EBV
Dome Cameras - White



WIPCVDV
Ceiling Mount Bracket -
White



WIPMPM
Multi Purpose Pole Mount
Bracket - White







WIPMPCM
Multi Purpose Corner
Mount Bracket - White



POE-INJ01S
PoE Single Port Passive
Injector - 30W

NETWORK VIDEO RECORDERS

Specification / Model		 WNVR416P5AI	 WNVR432P5AI	 WNVR832P5AI
System	OS	Embedded Linux		
	Mobile OS	iOS, Android		
Video	IP Video Input	16 channel IPC input	32 channel IPC input	
	Incoming Bandwidth	160Mbps	256Mbps	
	Outgoing Bandwidth	160Mbps	256Mbps	
	IP Video Input Resolution	8MP / 6MP / 5MP / 4MP / 3MP / 1080p / 1280x1024 / 960p / 720p / 960H / D1 / CIF	12MP / 8MP / 6MP / 5MP / 4MP / 3MP / 1080p / 1280 x 1024 / 960p / 720p / 960H / D1 / CIF	
	Output	HDMI x 1 : 3840x2160 @ 60fps / 3840x2160 @ 30fps / 1920x1080 / 1280x1024 / 1024x768 VGA x 1 : 1920x1080 / 1280x1024 / 1024x768	HDMI x 1 : 3840x2160 @ 60fps / 3840x2160 @ 30fps / 1920x1080 / 1280x1024 / 1024x768 VGA x 1 : 1920x1080 / 1280x1024 / 1024x768	
Compression	H.265S/H.265+/H.265/H.264			
Playback	Simultaneous Playback	Max 16 CH		
	Search	Time slice / Time / Event / Tag / Smart search		
	Smart Search	Highlighted colour to display the camera record in a certain period of time, different colors refers to different record events.		
	Function	Play, pause, FF, FB, digital zoom, etc.		
	Decoding Capability	Live View / Playback: 1CH 8MP / 4CH 1080p	Live View / Playback: 1CH 12MP/4CH 5MP/9CH 720p/16CH D1	
Port	RS485	Yes (Full-duplex), Connect to PTZ or keyboard		
	USB	USB 2.0 x 1 , USB 3.0 x 1		
	Remote Controller	Optional		
Face Recognition	Channel	16 CH	32 CH	
	Face Picture Database	32 libraries, 5000 face pictures		
	Computing Capability	180 pictures / minute		
	Face Picture Search	Search by picture is supported		
	Database Management	Add, modify, delete and search face pictures		
	Face Picture Adding	Add face pictures through App, Web and external import		
	External Face Picture Enrolment	Resolution: 128x128~920x1080, Size: ≤ 70KB, Format: jpg & jpeg		
	Face Picture Comparison	Supports allow list and block list alarm		
	Face Track	Yes		
	Map of Face Track	Resolution: 2560x1920, Size: ≤ 512KB, Format: jpg & jpeg		
	Statistic Graph of Face Information	Bar graph		
Statistic Mode of Face Information	Statistics by day, week, month, quarter as well as customised time period			
Remote Monitoring	Immix Supported	Yes, Firmware 1.2.0 or later (3rd Party decoder required for Two-way Audio)		
	Sentinel	Yes, Firmware 1.2.0 or later		
	Remote Access	Internet Explorer (ActiveX), HTML5 compatible browser support with firmware verion 1.4.5 and above		
Network	Interface	RJ45 1000 Mbps x 1	RJ45 10 / 100 / 1000 Mbps x 1	
	PoE Port	RJ45 x 16 (IEEE802.3af, output power: ≤ 150W)		
	Protocol	TCP / IP, PPPoE, DHCP, DNS, DDNS, UPnP, NTP, SMTP, HTTP, HTTPS, 802.1x, Onvif, etc.		
	Web Client	Max. 10 users access	Max. 20 users access	
Alarm	Mode	Manual, Sensor, Motion, Exception, Smart events		
	Input	8 CH local alarm input, supports IPC alarm input	16 CH local alarm input, supports IPC alarm input	
	Output	4 CH		
	Triggering	Record, Snap, Preset, E-mail, etc.		
Record	Record Stream	Dual stream recording		
	Resolution	8MP / 6MP / 5MP / 4MP / 3MP / 1080p / 1280x1024 / 960p / 720p / 960H / D1 / CIF	12MP @ 20fps, 8MP / 6MP / 5MP / 4MP / 3MP / 1080p / 1280x1024 / 960p / 720p / 960H / D1 / CIF @ 30fps (NTSC) / 25fps (PAL)	
	Frame Rate	NTSC: 30fps, PAL: 25fps		
	Mode	Manual / Timed / Motion / Sensor / POS / AI recording		
	ANR	-	Automatic network replenishment (Yes)	-
Audio	Network Input	16 CH IPC audio input	32 CH IPC audio input	
	Two-Way Audio	RCA x 1		
	Local Output	RCA x 1		
	Compression	G.711 (A/U)		

Specification / Model		 WNVR416P5AI	 WNVR432P5AI	 WNVR832P5AI
Backup & Storage	Local Backup	USB stick, USB mobile HDD		
	Network Backup	Yes		
	Storage	HDD: SATA x 4, Max. 10TB per HDD		HDD: SATA x 8, max 10TB per HDD; E-SATA x 1
Functions	Video Structure Analysis	Human/Vehicle Classification : Yes		
	Fisheye	Supports fisheye dewarping via Web Client and mobile App		
	Plate Recognition	Yes		
Others	Power Supply	ATX, 300W	ATX, 292W	ATX, 300W
	Consumption	≤ 30W (Without HDD and PoE power supply)	≤ 15W (Without HDD and PoE power supply)	
	Working Environment	-10~50°C, 10%~90% (Humidity)		



ATX, 300W & 292W



Supports fisheye dewarping (Depending on model)



Supports up to 8TB HDD storage



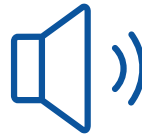
Live view and 16CH simultaneous playback



Plate recognition



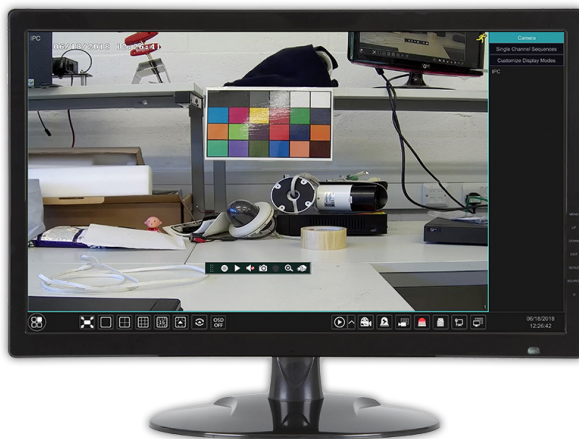
Supports multiple users on Web client



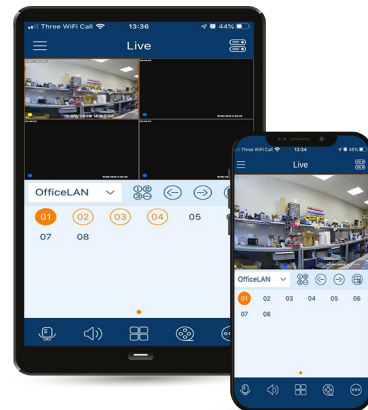
Audio and MIC



Facial recognition



4K display output via HDMI (selected models)



Free remote viewing app! (Supports iOS and Android devices)

APPLICATIONS

Our Xpert Range of cameras are the ideal solution for someone looking to install a CCTV system where added security is required.

Examples include:



Residential Properties



Commercial Properties



Retail / Shops / Supermarkets



Leisure Centres



Banks



Police Station



Hospitals



Night Clubs / Bars / Pubs



Warehouse



Education



Car Parks



Manufacturing

Contact us today!

Sales +44(0)1707 330541
Enquiries sales@genieproducts.co.uk
Website www.genieproducts.co.uk

