

4MP H.265 IP IR Vandal Dome with 2.8–12mm Auto Focus Lens and Facial Recognition

WIPX4VDVAF



Quick Start Guide

Please read these instructions carefully before operating the unit
and keep for further reference.

Please read this instruction carefully before operating the product and keep it for further reference. All examples and pictures used here are for reference only.
The contents of this manual are subject to change without notice.

CAUTION:

- If the product does not work properly, please contact your dealer or the nearest service centre. Never attempt to disassemble the camera yourself. We shall not be responsible for any problems caused by unauthorised repair or maintenance.
- Do not allow water or liquid into the camera while in use.
- When using the product, you must be in strict compliance with the electrical safety regulations of the nation and region.
- When the product is mounted on wall or ceiling, the device needs to be firmly fixed.
- Make sure the power supply voltage is correct before using the camera.
- Do not drop the camera or subject it to any physical shock.
- If cleaning, please use a clean soft cloth with a little neutral detergent to wipe it gently.
- Do not aim the camera at the sun or in any area where there is bright lighting.
- The device may be burned out by a laser beam, so when any laser equipment is in use, make sure that the surface of the device will not be exposed to the laser beam.
- Do not place the camera in extremely hot, cold, dusty or damp locations, and do not expose it to high electromagnetic radiation.
- To avoid heat accumulation, good ventilation is required for operating environment.

1.0 Introduction.....4

 1.1 Product Features.....4

 1.2 Product Dimensions4

 1.3 Contents4

 1.4 Specification5

2.0 Overview.....7

3.0 Installation.....9

 3.1 Installing the Camera9

 3.2 Installing the Camera with a Junction Box.....10

4.0 Network Connection11

5.0 Camera Maintenance.....12

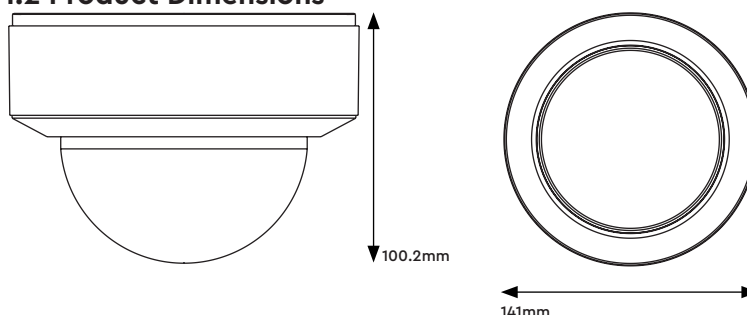
1.0 Introduction

The Genie WIPX4VDVAF is a 4MP IP IR vandal dome camera with a 2.8–12mm auto focus lens. The camera features facial recognition when paired with any Genie AI NVR.

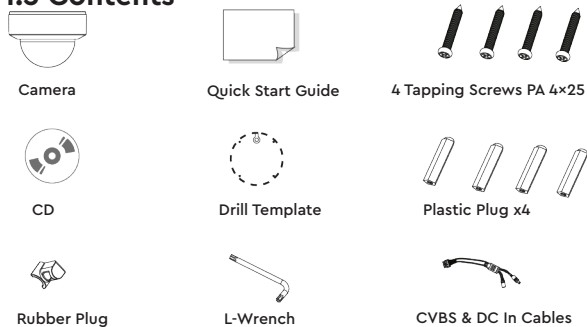
1.1 Product Features

- 4MP (2592×1520) H.265 full real time coding
- Maximum resolution: 2592 × 1520
- ICR auto switch, true day / night vision
- 30 ~ 50m IR night view distance
- Motorised zoom lens
- Supports image distortion correction
- 3D DNR, true WDR, HLC, BLC, Defog, NIR, Smart IR and ROI coding
- Built-in micro SD card slot up to 128GB
- DC12V/PoE power supply
- IP67 & IK10 ingress protection
- Supports three streams
- Intelligent analytics
- Supports remote monitoring by smart phones & tablet PCs with iOS and Android OS
- Onvif compliant

1.2 Product Dimensions



1.3 Contents

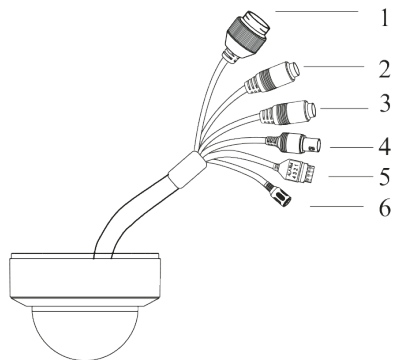


1.4 Specification

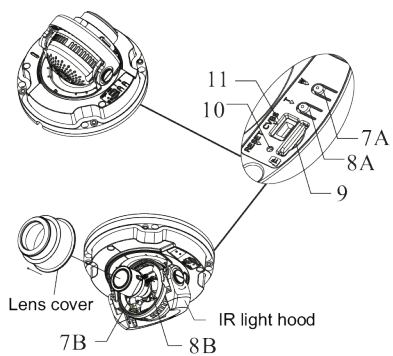
Camera	Image Sensor	1 / 3" CMOS
	Image Size	2592 × 1520
	Electronic Shutter	1 / 30 s ~ 1 / 100000 s
	Iris Type	DC Iris
	Minimum Illumination	0.0038 Lux @ F1.4, AGC ON, 0 Lux with IR 0.0028 Lux @ F1.2, AGC ON, 0 Lux with IR
	Lens	2.8~12mm @ F1.4, motorised
	Lens Mount	Ø14
	Field of View	Horizontal: 94.2°~29.8°, Vertical: 62.4°~17°, Diagonal: 102°~33.9°
	Day & Night	ICR
	Wide Dynamic Range	120dB
	BLC	Yes
	HLC	Yes
	Defog	Yes
	Digital NR	3D DNR
	Angle Adjustment	Pan: 0°~345°, Tilt: 0°~77°, Rotation: 0°~345°
Image	Video Compression	Smart H.265 / H.265+ / H.265 / Smart H.264 / H.264+ / H.264 / MJPEG
	H.264 Compression Standard	Baseline Profile / Main Profile / High Profile
	Resolution	4MP (2592 × 1520), 2K (2560 × 1440), 3MP (2304 × 1296), 1080p (1920 × 1080), 720p (1280 × 720), D1, CIF, 480 × 240
	Main Stream	4MP / 2K / 3MP / 1080p / 720p (60Hz : 1 ~ 30fps, 50Hz: 1~25fps) HFR mode: 1080p / 720p (60Hz : 1 ~ 60fps, 50Hz: 1~50fps)
	Sub Stream	720p / D1 / CIF / 480 × 240 (60Hz : 1 ~ 30fps, 50Hz: 1~25fps)
	Third Stream	D1 / CIF / 480 × 240 (60Hz : 1 ~ 30fps, 50Hz: 1~25fps)
	Bit Rate	64 Kbps ~ 8 Mbps
	Bit Rate Type	VBR / CBR
	Audio Compression	G711A / U
	Image Settings	ROI, Saturation, Brightness, Chroma, Contrast, Wide Dynamic, Sharpen, NR, etc. Adjustable through client software or web browser
	ROI	Each ROI to be configured separately
Interface	Network	RJ45
	Video Output	CVBS Output (BNC x 1)
	Audio	1CH audio input, 1CH audio output, 1CH built-in MIC
	Alarm	1CH alarm input, 1CH alarm output
	Storage	Built-in micro SD card slot, up to 128GB
	Hardware Reset	Yes

Functions	Remote Monitoring	Web browsing, CMS remote control
	Online Connection	Supports simultaneous monitoring for up to 10 users. Supports multi-stream real time transmission
	Network Protocol	UDP, IPv4, IPv6, DHCP, NTP, RTSP, PPPoE, DDNS, SMTP, FTP, SNMP, HTTP, 802.1x, UPnP, HTTPs, QoS
	Interface Protocol	Onvif compatible
	Intelligent Analytics	Line crossing
		Region entrance / exiting /intrusion (human / motor vehicle / non-motor vehicle classification)
		Line crossing human / motor vehicle / non-motor vehicle counting scene change
		Video blur and video colour cast detection
	Storage	Network remote storage, Micro SD card storage
	Smart Alarm	Motion detection, Sensor detection, SD card error, SD card full, IP conflict, cable disconnection
Others	General Function	Watermark, IP address filtering, video mask, heartbeat, password protection, image distortion correction, etc.
	PoE	Yes, IEEE802.3af
	IR Distance	30~50m
	Ingress Protection	IP67 & IK10
	Power Supply	DC12V / PoE
	Power Consumption	< 8W
	Operating Environment	- 30 °C ~ 60 °C (-22 °F~140°F) Humidity: Less than 95 % (Non-Condensing)
	Dimensions	141 × 100.2 mm
	Weight	Approx. 0.93 Kg

2.0 Overview

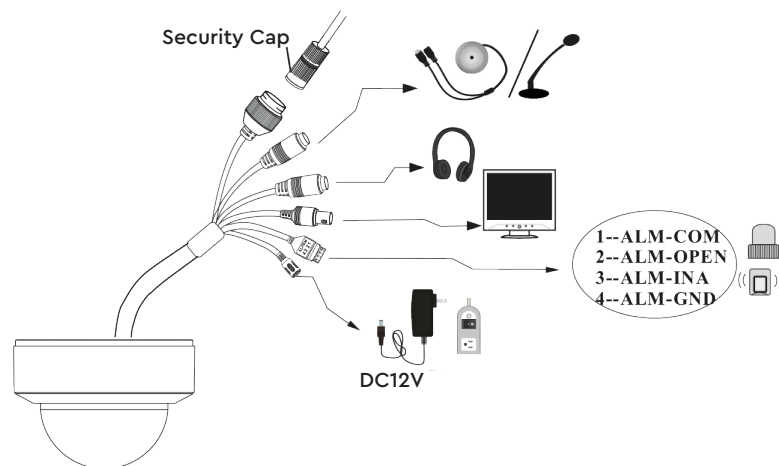


Type A : Motorised Zoom Camera



Type B : Manual Zoom Camera

1. Ethernet Connector
2. Audio Input (MIC)
3. Audio Output (HP)
4. CVBS Video Output
5. Alarm Input/Output
6. DC12V Power Connector
7. A: Zoom- (only available for type A),
B: Focus
8. A : Zoom+ (only available for type A),
B: Zoom
9. Micro SD Card Slot
10. Reset
11. DC in & CVBS Interface

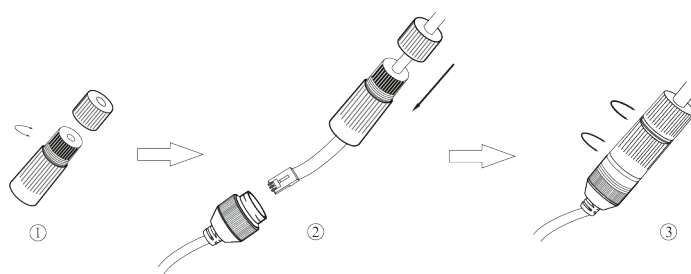


- If the PoE switch is used to power the camera, DC12V power supply is not required.
- It is recommended to install the security cap for outdoor installation.

Alarm Input: Join the grounding ends of the sensor and the camera and then connect the signal cable of the sensor to the alarm input port of the camera.

Alarm Output: Loosen the screws in the alarm output port. Then insert the signal wires of the alarm output devices into the port of COM and OPEN separately. Finally tighten the screws. Some of the external alarm output devices need the power supply.

Connecting Network Cable

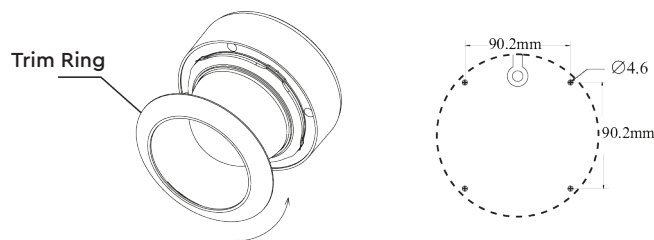


1. Loosen the nut from the main element.
2. Run the network cable (without RJ 45 connector) through both elements. Then crimp the cable with RJ 45 connector.
3. Connect the cable to the hermetic connector. Then tighten the nut and the main cover.

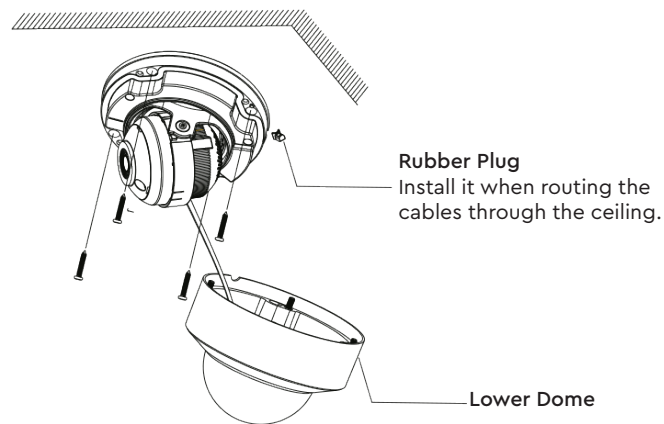
3.1 Installing the Camera

Please make sure that the wall or ceiling is strong enough to withstand 3 times the weight of the camera. Please install the camera in and under a dry environment and place the cover of the camera within 4 hours of removing it. Do not remove the protection film until finishing the installation.

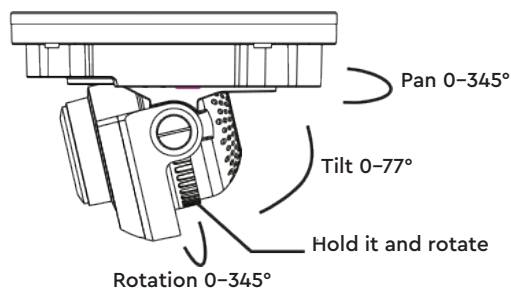
1. Rotate the trim ring anti-clockwise to remove it from the camera.
2. Attach the drill template to the place where you want to fix the camera and then drill 4 screw holes and 1 cable hole (if you want to route the cables through the ceiling) according to the drill template.



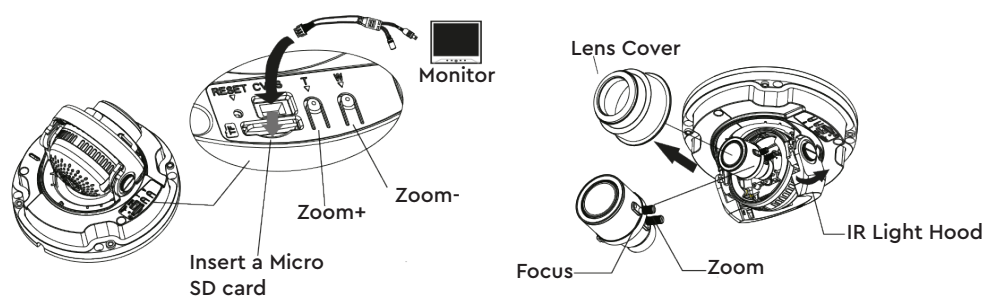
3. Loosen the screws to open the lower dome.
4. Route and connect these cables. Then secure the camera to the ceiling or wall with the screws provided.



5. Three-axis adjustment. Before adjustment, preview the image of the camera on a monitor and then adjust the camera according to the figure below to get an optimum angle.



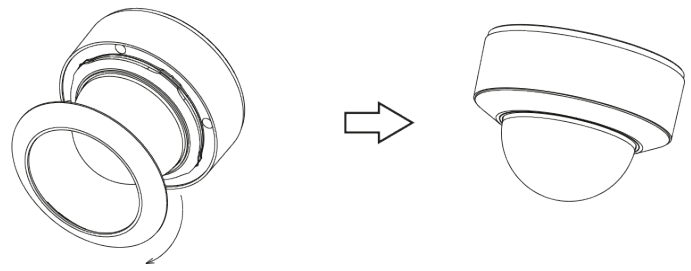
6. Insert a micro SD card. After that, adjust Zoom or Focus to obtain an optimum image. Before adjustment, view the image of the camera on a monitor. For Type A, press the T or W button. For Type B, (a) push the IR light hood to the position, (b) remove the lens cover, (c) adjust the Zoom and Focus, (d) install back the lens cover and move the IR light hood back.



Type A : Motorised Zoom Camera

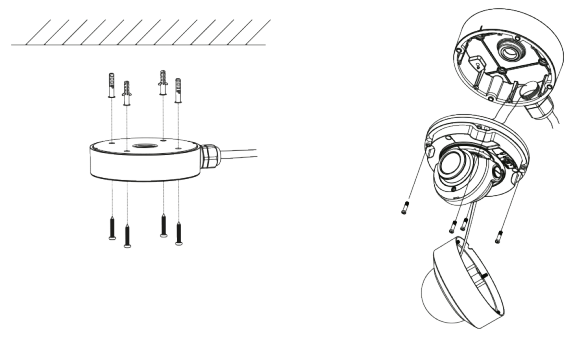
Type B : Manual Zoom Camera

7. Install the lower dome back to the camera and fix it with screws. Then put the trim ring onto the lower dome and then rotate it clockwise until it is locked. Finally, remove the protection film softly.



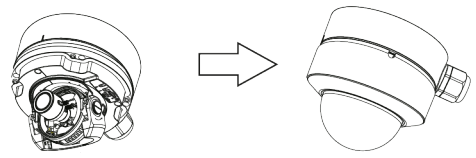
3.2 Installing the Camera with a Junction Box

1. Fix the junction box to the wall with screws.
2. Rotate the trim ring anticlockwise to remove it from the camera and then loosen the screws to open the lower dome.
3. Route and connect these cables (take side conduit cabling for example). Then fasten the camera to the junction box with screws.



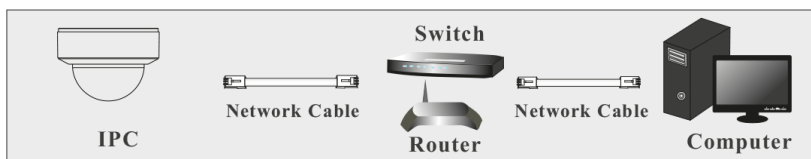
4. Insert a micro SD card. Then adjust the view of angle and the image.

5. Install the lower dome back to the camera and fix it with screws. Then put the trim ring onto the lower dome and then rotate it clockwise until it is locked. Finally, remove the protection film softly.

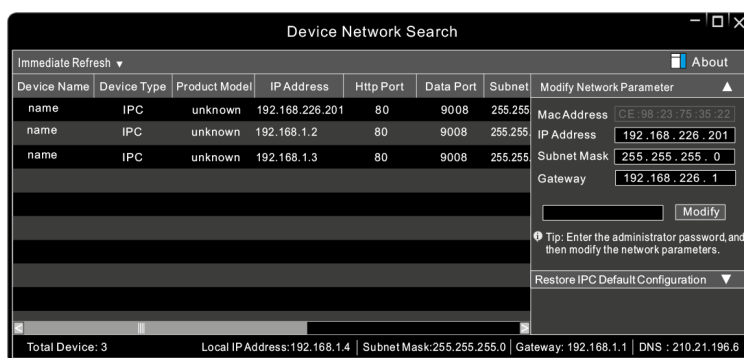


4.0 Network Connection

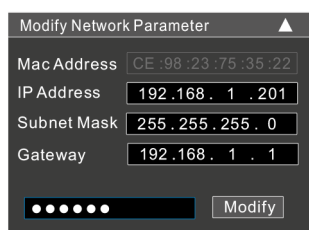
Access the Camera through the IP Tool



1. Make sure that the camera and the PC are well connected via LAN.
2. Find the IP-Tool from the CD and then install it in the computer. After that, run the IP Tool as shown below.



3. Modify the IP address. The default IP address of this camera is 192.168.226.201. Click the information of the camera listed in the above table to show the network information on the right hand. Modify the IP address and gateway of the camera and make sure its network address is in the same local network segment as that of the computer. Please modify the IP address of your device according to the practical situation.



For example, the IP address of your computer is 192.168.1.4. So the IP address of the camera shall be changed to 192.168.1.X and the gateway shall be changed to 192.168.1.1. After modification, please enter the password of the administrator and click "Modify" button to modify the settings. The default password of the administrator is "123456".

4. Double-click the camera listed in the IP-Tool or manually enter the IP address in the address bar of the web browser to connect IP-CAM. Then follow directions to download and install the plugin. Enter the username and password in the login interface. The default username is admin; the default password is 123456.

5.0 Camera Maintenance

Transparent dome is an optical element. As dirt, dust or fingerprints on the dome will reduce the clarity of the image, please don't touch or wipe the cover surface directly during installation and use. Please refer to the following cleaning tips to clean it.

- If there is dust on the dome, please use a dry soft brush to gently brush it
- If there is water or grease on the dome, please gently wipe off the water drop or grease with a soft cloth and then use oil-free cotton cloth with the neutral detergent to wipe it several times from the center to outward. Finally, change the cloth to dry it.
- If there are fingerprints on the dome, please use oil-free cotton cloth or paper soaked with the neutral detergent to wipe it several times from the center to outward and then dry it with a soft cloth.

Sales +44(0)1707 330541

Enquiries sales@genieproducts.co.uk

Website www.genieproducts.co.uk