

6MP IP IR Fisheye Camera

WIP6F



Quick Start Guide

Please read these instructions carefully before operating the unit and keep for further reference.

Please read this instruction carefully before operating the product and keep it for further reference. All examples and pictures used here are for reference only. The contents of this manual are subject to change without notice.

CAUTION:

- If the product does not work properly, please contact your dealer or the nearest service centre. Never attempt to disassemble the camera yourself. We shall not be responsible for any problems caused by unauthorised repair or maintenance.
- Do not allow water or liquid into the camera while in use.
- When using the product, you must be in strict compliance with the electrical safety regulations of the nation and region.
- When the product is mounted on wall or ceiling, the device needs to be firmly fixed.
- Make sure the power supply voltage is correct before using the camera.
- Do not drop the camera or subject it to any physical shock.
- If cleaning, please use a clean soft cloth with a little neutral detergent to wipe it gently.
- Do not aim the camera at the sun or in any area where there is bright lighting.
- The device may be burned out by a laser beam, so when any laser equipment is in use, make sure that the surface of the device will not be exposed to the laser beam.
- Do not place the camera in extremely hot, cold, dusty or damp locations, and do not expose it to high electromagnetic radiation.
- To avoid heat accumulation, good ventilation is required for operating environment.

1.0 Introduction.....	4
1.1 Product Features.....	4
1.2 Product Dimensions	4
1.3 Contents	4
1.4 Specification	5
2.0 Overview.....	6
3.0 Installation.....	8
3.1 Installing the Camera	8
3.2 Installing the Camera with a Junction Box.....	9
3.3 Installing SD Card	10
4.0 Network Connection	11

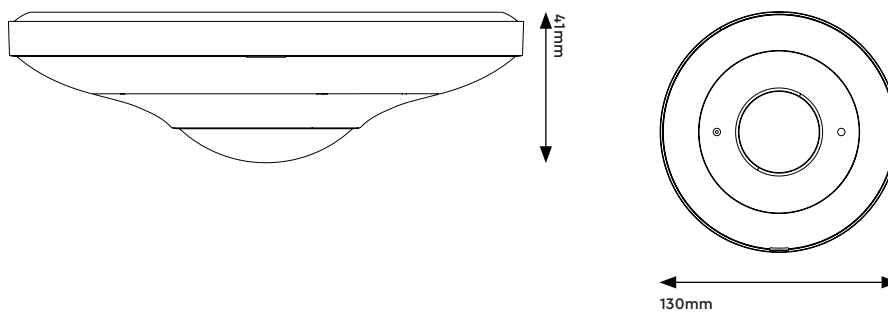
1.0 Introduction

The Genie WIP6F is a 6MP IP IR fisheye camera. It supports local CVBS video output and two way audio as well as 20~30m IR night view distance.

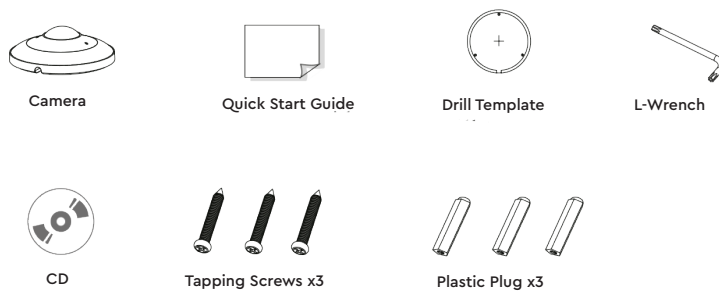
1.1 Product Features

- 6MP H.265 full real time coding
- Effective pixels: 2160 × 2160
- ICR auto switch, true day / night
- 20 ~ 30m IR night view distance
- 3D DNR, digital WDR, HLC, BLC and ROI coding
- 1x CVBS output
- 1CH audio input, 1CH audio output, 1CH built-in MIC
- Built-in micro SD card slot, up to 128GB
- Hardware reset
- RS485
- 1CH alarm input, 1CH alarm output
- DC12V/PoE power supply
- Supports smart phone, iPad, remote monitoring
- IP67 ingress protection
- Supports three streams

1.2 Product Dimensions



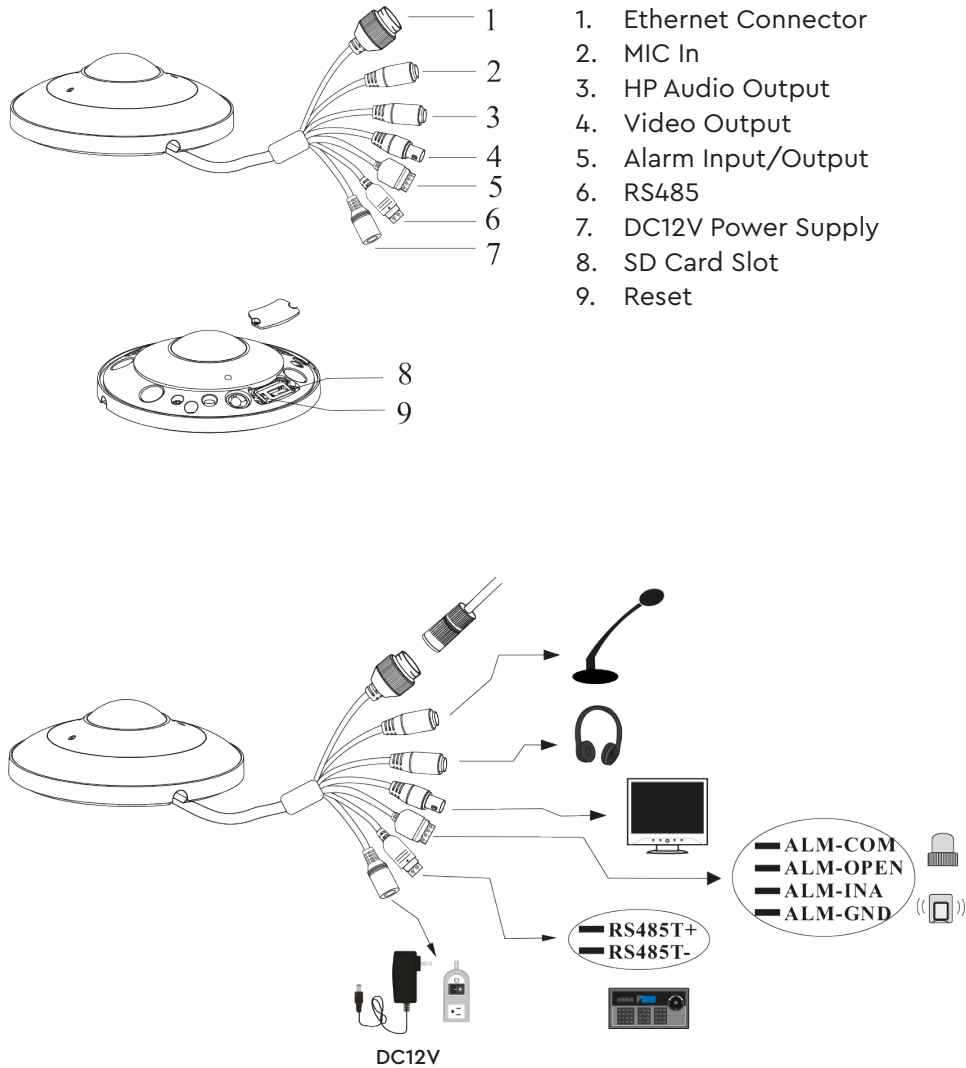
1.3 Contents



1.4 Specification

Camera	Image Sensor	1 / 2.9" 6MP progressive scan CMOS
	Image Size	2160 × 2160
	Electronic Shutter	1 / 25 s ~ 1 / 100000 s
	Minimum Illumination	0.068 Lux @ F2.0, AGC ON, 0 Lux with IR
	Lens	1.07mm @ F2.5 Horizontal field of view, 180° Wall mount, 360° Ceiling mount
	Day & Night	ICR
	Wide Dynamic Range	Digital WDR
	BLC	Yes
	HLC	Yes
	Digital NR	3D DNR
	Slow Shutter	Yes
Image	Video Compression	H.265 / H.264 / MJPEG
	Encoding Type	VBR (Five levels adjustable) / CBR
	Main Stream	Fisheye Panorama +3 PTZ 50Hz: 25fps @ (2160 × 2160 / 1920 × 1920 / 1440 × 1440), 25fps @ (1920 × 1080), 25fps @ (960 × 540)*3 60Hz: 30fps @ (2160 × 2160 / 1920 × 1920 / 1440 × 1440), 30fps @ (1920 × 1080), 30fps @ (960 × 540)*3
		Fisheye+ 4 PTZ 50Hz: 25fps @ (2160 × 2160 / 1920 × 1920 / 1440 × 1440), 25fps @ (960 × 540)*4 60Hz: 30fps @ (2160 × 2160 / 1920 × 1920 / 1440 × 1440), 30fps @ (960 × 540)*4
	Bit Rate	128 Kbps ~ 16 Mbps
	Audio Compression	G711A / U
	Audio Bit Rate	8Kbps ~ 48 Kbps
	Image Settings	ROI, Saturation, Brightness, Chroma, Contrast, Wide Dynamic, Sharpen, NR, etc. Adjustable through client software or web browser
	ROI	Each ROI to be configured separately
Functions	Remote Monitoring	Web browsing, CMS remote control
	Online Connection	Supports simultaneous monitoring for up to 11 users, supports multi-stream real time transmission
	Network Protocol	UDP, Pv4, IPv6, DHCP, NTP, RTSP, PPPoE, DDNS, SMTP, FTP, SNMP, UPnP, HTTP
	Interface Protocol	Onvif compatible
	Storage	Network remote storage, micro SD card storage
	Smart Alarm	Motion detection, sensor alarm
	General Function	Watermark, IP address filtering, video mask
	PoE	Yes
	IR Distance	20 ~ 30 m
Interface	Network	RJ45
	Video Output	No
	Audio	Built-in MIC x1
	Storage	Built-in Micro SD card slot, Up to 128GB
	Hardware Reset	Yes
Others	Ingress Protection	IP67
	Power Supply	DC12V / PoE
	Power Consumption	< 12W
	Operating Environment	- 30 °C ~ 50°C (-22°F~122°F) Humidity: Less than 95% (Non-condensing)
	Dimensions	130 × 41 mm
Weight	Approximately 0.45Kg	

2.0 Overview

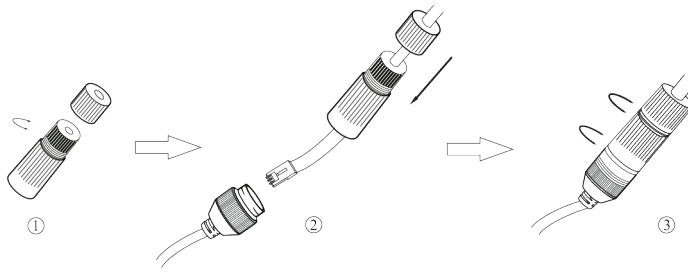


- If the PoE switch is used to power the camera, DC12V power supply is not required.

Alarm Input: Join the grounding ends of the sensor and the camera and then connect the signal cable of the sensor to the alarm input port (ALM-INA) of the camera.

Alarm Output: Loosen the screws in the alarm output port. Then insert the signal wires of the alarm output devices into the port of COM and OPEN separately. Finally tighten the screws. Some of the external alarm output devices need the power supply.

Connecting Network Cable

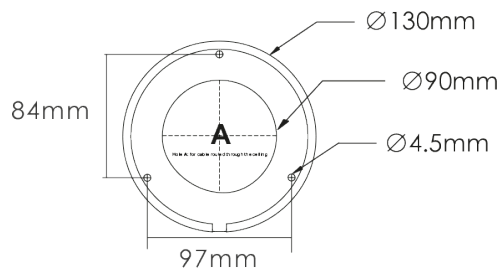


1. Loosen the nut from the main element.
2. Run the network cable (without RJ 45 connector) through both elements. Then crimp the cable with RJ 45 connector.
3. Connect the cable to the hermetic connector. Then tighten the nut and the main cover.

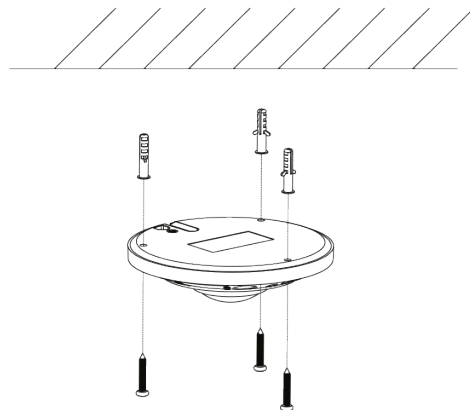
3.1 Installing the Camera

Please make sure that the wall or ceiling is strong enough to withstand 3 times the weight of the camera. Please install the camera in and under a dry environment and place the cover of the camera within 4 hours of removing it.

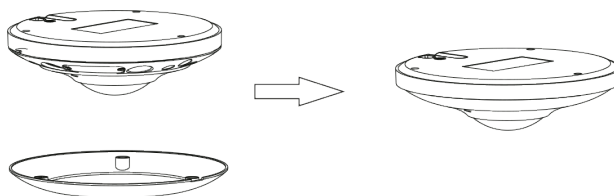
1. Remove the fixed ring from the gap of the camera (see Installing SD Card)
2. Drill the screw holes and cut the cable hole (A) in the ceiling according to the drill template.



3. Route and connect the cables.
4. Fix the camera to the wall with screws as shown below.

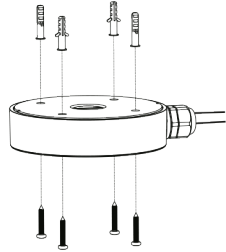


5. Install the fixed ring back to the camera.

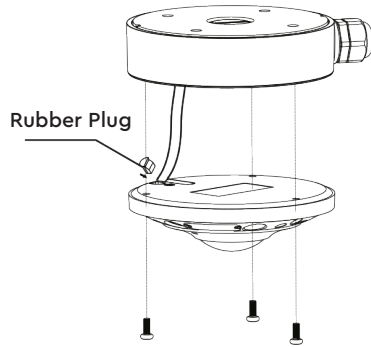


3.2 Installing the Camera with a Junction Box

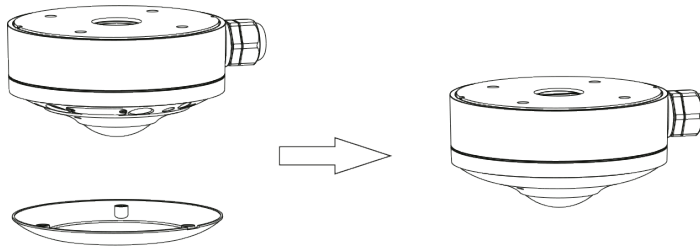
1. Remove the fixed ring from the gap of the camera (see Installing SD Card)
2. Install the junction box onto the wall.



3. Route the cables through the cable hole (take side conduit cabling for example) and connect the cables. Then fix the camera onto the junction box with screws.

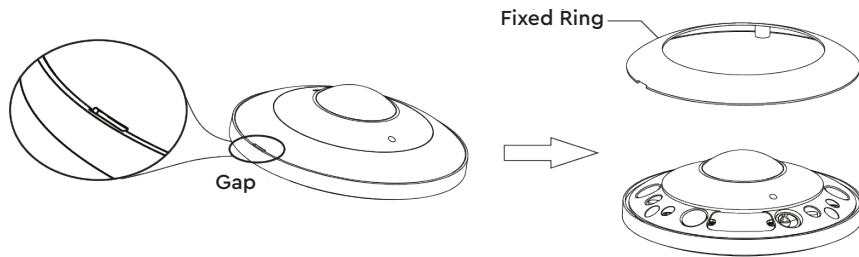


4. Install the fixed ring back to finish the installation.

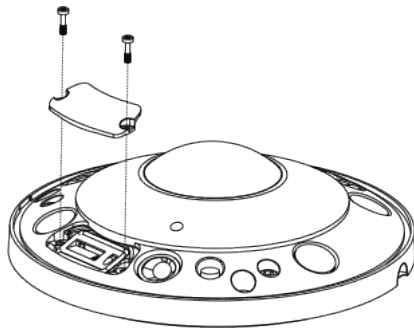


3.3 Installing SD Card

1. Remove the fixed ring from the gap of the camera.



2. Loosen the screws of the cover of the SD card and then insert the SD card. After that, install the cover back.



4.0 Network Connection

Here we take accessing the device via LAN for example. In LAN, there are two ways to access:

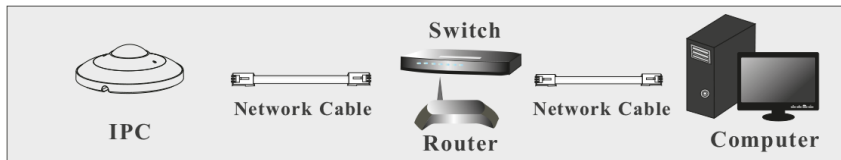
1. Access through IP-Tool
2. Directly Access through Web Browser

The default network settings are as shown below:

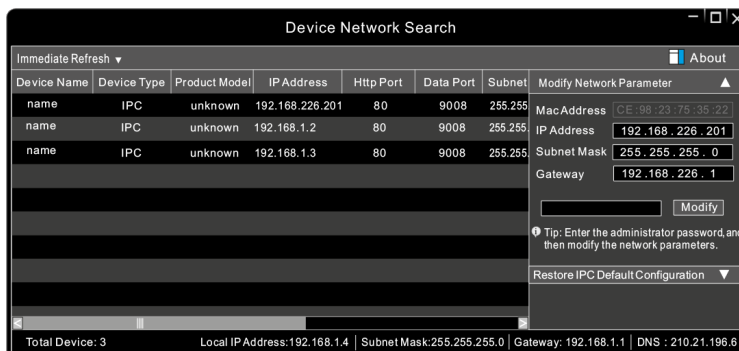
- IP address: 192.168.226.201
- HTTP:80
- Subnet Mask: 255.255.255.0
- Gateway: 192.168.226.1
- Data Port:9008

You may use the above default settings when you log in the camera for the first time.

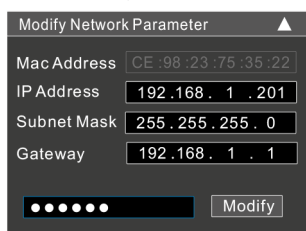
Access the Camera through the IP Tool



1. Make sure that the camera and the PC are well connected via LAN.
2. Find the IP-Tool from the CD and then install it in the computer. After that, run the IP Tool as shown below.



3. Modify the IP address. The default IP address of this camera is 192.168.226.201. Click the information of the camera listed in the above table to show the network information on the right hand. Modify the IP address and gateway of the camera and make sure its network address is in the same local network segment as that of the computer. Please modify the IP address of your device according to the practical situation.



For example, the IP address of your computer is 192.168.1.4. So the IP address of the camera shall be changed to 192.168.1.X and the gateway shall be changed to 192.168.1.1. After modification, please enter the password of the administrator and click "Modify" button to modify the settings. The default password of the administrator is "123456".

4. Double-click the camera listed in the IP-Tool or manually enter the IP address in the address bar of the web browser to connect IP-CAM. Then follow directions to download and install the plugin. Enter the username and password in the login interface. The default username is admin; the default password is 123456.

Access the Web Browser

1. Make sure that the camera and the PC are connected via LAN.
2. Find the IP-Tool from the CD and then install it in the computer. After that, run the IP-Tool.
3. Modify the IP address and make sure its network address is in the same local network segment as the computer's.
4. Open Web browser and input the modified IP address in the address bar to log in the Web client. Follow directions to download the plug-in in the computer. After that, enter the default user name and password to login.

Sales +44(0)1707 330541

Enquiries sales@genieproducts.co.uk

Website www.genieproducts.co.uk

genie