

WAHD2LBV

BULLET CAMERA

1080p AHD IR Bullet Camera with 2.8-12mm Lens



Key Features

- 1080p real-time image
- Analogue high definition (AHD) video output
- True Day / Night
- 30 ~ 50m IR Range
- IP66 ingress protection
- NDAA compliant

The Genie WAHD2LBV is a 1080p AHD bullet camera with an integrated IR 2.8-12mm lens.



Specification

Camera

Image Sensor	1/3" CMOS
Image Size	1080p (1920 × 1080)
Image System	PAL / NTSC
Resolution	1920 × 1080
Electronic Shutter	1/50s ~ 1/50000s (PAL), 1/60s ~ 1/50000s (NTSC)
Minimum Illumination	0 Lux (LED On)
Lens	2.8-12 mm
S / N Ratio	>52dB (AGC Off)
Frame Rate	30 fps (60 Hz), 25 fps (50 Hz)
Video Output	BNC x1

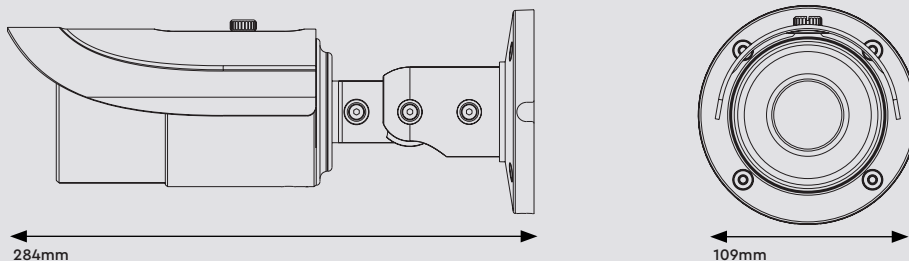
Others

Ingress Protection	IP66
Power Supply	DC12V (±10°C)
Working Environment	Temperature: -20°C ~ 50°C, Humidity: 10% ~ 90%
Dimensions	109 × 284 mm
Weight	1010g

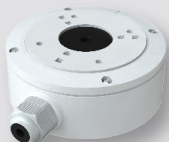
Functions

IR Distance	30 ~ 50 m
Function Control	OSD
Day & Night	Yes (ICR)
WDR	Yes
3D NR	Yes
AGC	Yes
White Balance	ATW, AWC, SET, Indoor, Outdoor, Manual
Advanced Image	Sharpness, Saturation, Brightness etc are Adjustable
Defog	Yes
Smart IR	Yes
Mirror	Yes
Privacy Mask	Up to 8 Areas
Motion Detection	Up to 4 Areas
Defect Correction	Yes (Support Live and Static Defective Pixel Correction)
Language	12 Languages Supported
BLC & HLC	Yes

Dimensions



Accessories



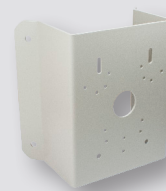
WIPJBBV
Junction Box for Varifocal
Bullet Cameras – White



WIPSWM
Surface Mount Wall
Bracket (Junction Box NOT
included) – White



WIPMPPM
Multi Purpose Pole Mount
Bracket – White



WIPMPCM
Multi Purpose Corner
Mount Bracket – White



PSU1SM
DC12V 1A
Regulated Switch
Mode Power
Supply