



# The Biometric Range

# AC SERIES



Virdi's AC series feature various models that have been designed to operate as stand alone, networked or integrated into third party access control systems as well as operate under challenging conditions. They can also be added into a Paxton Net2 system seamlessly with BIOMERGE-PX2 software.



AC2000SC



AC2200SC



AC5000SCP (PoE)  
AC5000PLUS-IK



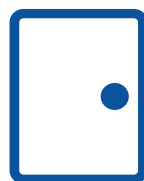
AC5000SCPW (PoE)  
AC5000PLUSW-IK



Patented fake fingerprint detection.



Multi-factor authentications.



Work in standalone mode with templates stored locally or networked and stored using Virdi's Unis software.



IP65 ingress protection (AC5000PLUS-IK series is also IK09 rated).



Touch screen interface.

OSDP

Open supervised device protocol (OSDP)



Bluetooth support (AC2000SC and AC2200SC).



Built-in digital camera (AC2200SC).

# BIOMERGE-PX2



Biomerge has been designed to seamlessly blend the Viridi Biometric terminal range with Paxton's Net2 software platform.

BioMerge-PX2 consists of two programs, Server and Client.

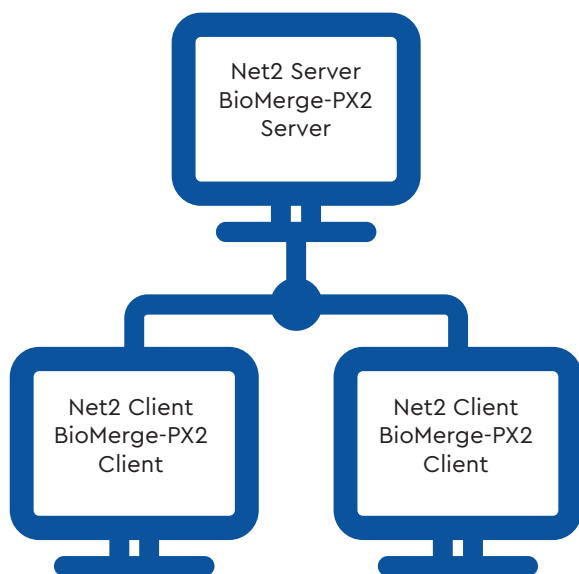
## Server

The server program is designed to be installed on the Paxton server. Viridi terminals will be listed on the server and can be maintained from here. The server program receives user updates from the Paxton Net2 application and sends them to the Viridi terminals. It is the link between Paxton Net2 and the Viridi terminals.

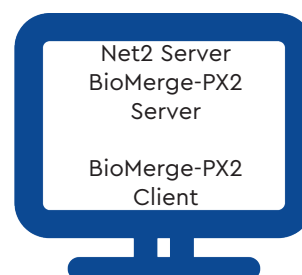
## Client

The client program is designed to be installed on Paxton client PC's or on the Paxton server PC in cases where the Paxton server PC is also used for enrolment. The client program is used for enrolment and modification of user information in relation to the Viridi terminals.

### Scenario A



### Scenario B



NOTE: BioMerge-PX2 server and BioMerge-PX2 Client are a license based system. Contact Sales for more information.



Integrates with Net2 software.



Select between multi-factor authentication.



Terminal restore utility.



One time user enrolment avoiding the need for enrolling on multiple systems.

# UBIO-X SERIES

Virdi's UBIO series features various models that are equipped with a powerful quad core processor and high definition camera as well as a high performance face recognition algorithm, providing the fastest matching speed whilst maintaining the highest accuracy. Some models also have a fingerprint reader and card reader built-in which can be used as well as the face recognition technology.



UBIO-X-PRO  
UBIO-X-PRO-LITE



UBIO-X-PRO2



UBIO-X-IRIS



UBIO-X-SLIM



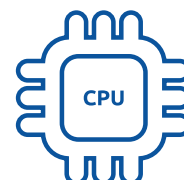
5" touch screen interface.



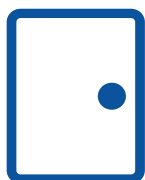
Easy face enrolment using a camera or phone picture.



Patented fake fingerprint detection.



Equipped with a powerful Quad Core Processor.



Work in standalone mode with templates stored locally or networked and stored using Virdi's Unis software.



Perfect upgrade to existing or for new Virdi access control systems where contactless entry is required.

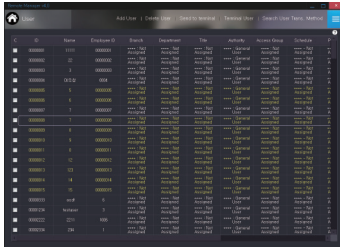


High ambient light conditions.



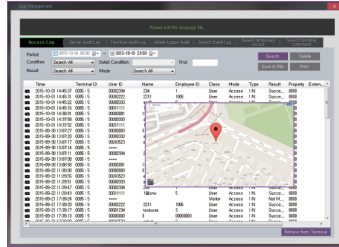
High speed face and fingerprint recognition.

UNIS remote manager releases the full power of the Viridi Biometric terminal range by providing the operator a simple to use and intuitive software interface designed to manage their access control requirements. Features such as duress fingerprints, personnel area control and access time schedules are standard features in the UNIS software platform.



### User Management

- Visitor management
- Site and affiliation management
- Authority level policy
- Integrative user registration by external files



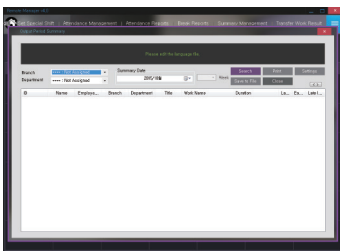
### Log Management

- Access history sorting
- Modified history
- Event history on the terminal
- GPS location data



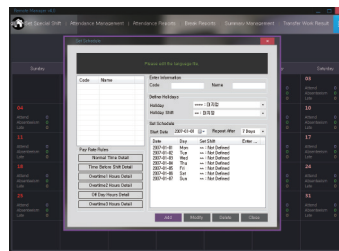
### e-Map

- Terminal location icon
- Real time terminal error icon
- Individual pop-up alert per error



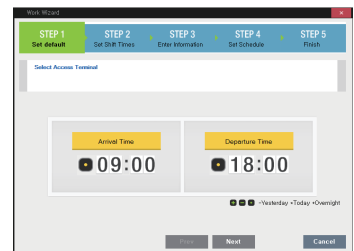
### Aggregated Time & Attendance Data

- Aggregated periodic work data
- Weekly or monthly total
- Uniwork Licence is required for over ten finger print templates for T&A.



### Work Type Setting

- Work rotation by days or periods
- Various types of work



### Wizard Function

- Easy to set functions
- Access control / T&A / Meal Management



Powerful user management.



Meal management.



Anti-passback.



Multi-authentication modes.



# UBIO-TAB-5

The UBIO-TAB-5 is a stylish portable fingerprint recognition tablet that can be used in various applications.



Patented fake fingerprint detection.



Touch screen interface.



Portable time and attendance and customer management solution.



Wi-Fi and GPS to locate the device.



# FOH02SC

The FOH02SC is a biometric desktop USB fingerprint and card enrolment reader compatible with Viridi readers / terminals and the UNIS software.



Patented fake fingerprint detection.



Rapid and accurate authentication.



Fingerprint data storage on smart card.



Fingerprint or card authentication.



# APPLICATIONS

Our Biometric solutions range of products are perfect for someone looking to install either a standalone or networked system where secure access is required.

Examples include:



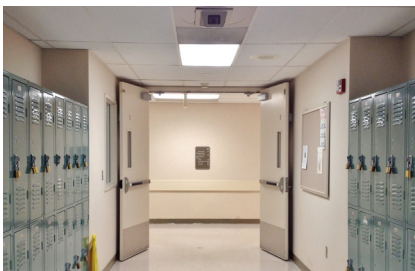
Commercial Properties



Retail / Shops / Supermarkets



Leisure Centres



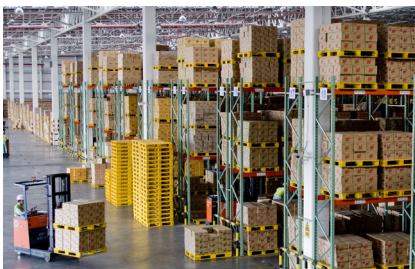
Education



Hospitals



Night Clubs / Bars / Pubs



Warehouse



Police Station



Banks

Contact us today!

Sales +44(0)1707 330541  
Enquiries [sales@genieproducts.co.uk](mailto:sales@genieproducts.co.uk)  
Website [www.genieproducts.co.uk](http://www.genieproducts.co.uk)

