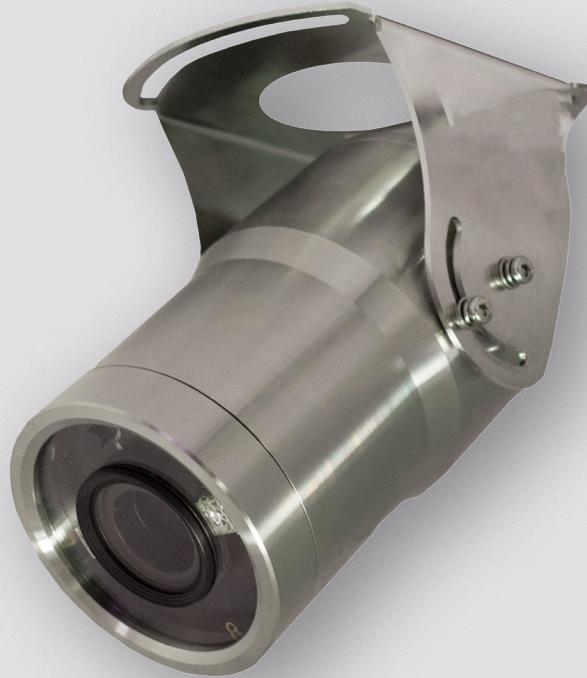


SSAHD2LBVAF

# BULLET CAMERA

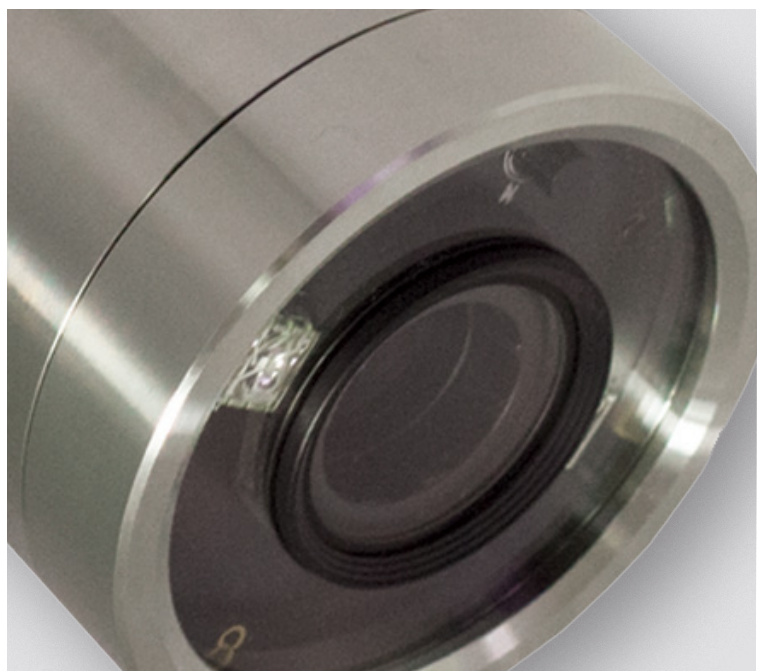
2MP Stainless Steel AHD IR Bullet Camera with 5–50mm Auto Lens



## Key Features

- 1/2.8" Sony Starvis CMOS image sensor
- Full HD (1920 × 1080) resolution
- Auto compensation and long range transmission
- Stainless steel body (AISI 316L grade)
- 2 pcs pearl LED's
- 5–50mm DC auto iris motorised megapixel lens
- True day & night with ICR mechanism
- Excellent low illumination performance
- 3D DNR (Digital Noise Reduction)
- Sens-up
- D-WDR (Digital Wide Dynamic Range)
- IP67 ingress protection
- DC12V
- Wall mount bracket option
- NDAA compliant

The Genie SSAHD2LBVAF is a 2MP AHD bullet camera with a 5–50mm varifocal auto focus lens. The body is 316 grade stainless steel making this camera an ideal choice for applications in harsh environments.



## Specification

### Camera

<b>Image Sensor</b>	1/2.8" Sony Starvis CMOS sensor
<b>Scanning System</b>	Progressive
<b>Resolution</b>	1080p
<b>Minimum Illumination</b>	0.01 Lux at IR off (F1.0) 0.00 Lux at IR on
<b>Lens</b>	5-50mm motorised DC auto iris lens (ICR)
<b>S / N Ratio</b>	More than 50dB (AGC Off)
<b>Video Output</b>	Universal AHD, CVI, TVI: 1080p, 720p Analogue: NTSC/ PAL CVBS

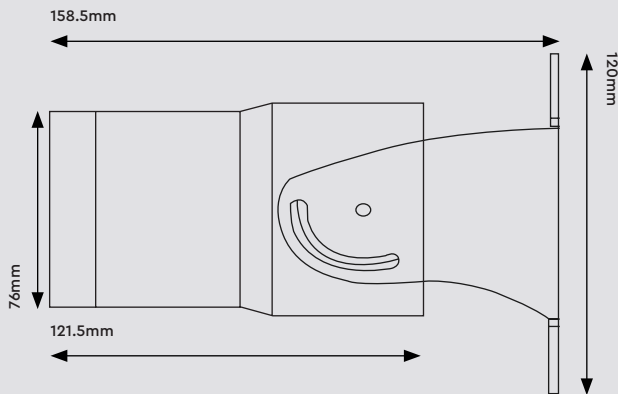
### Others

<b>Ingress Protection</b>	IP67
<b>Power Supply</b>	DC12V ( $\pm 10\%$ )
<b>Power Consumption</b>	Max 4.0W
<b>Working Environment</b>	Temperature: $-10^{\circ}\text{C} \sim 50^{\circ}\text{C}$ , Humidity: 10 % $\sim$ 85 %
<b>Dimensions</b>	76 $\times$ 158.5 $\times$ 120 mm
<b>Weight</b>	2080g

### Functions

<b>Sens-Up</b>	Off / x2 - x30
<b>DNR</b>	Off / Low / Middle / High
<b>Backlight</b>	Off / BLC / HSBLC
<b>D-WDR</b>	Off / 0-8
<b>Motion Detection</b>	Off / On
<b>Privacy Mask</b>	4 Masks

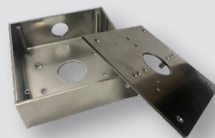
## Dimensions



## Accessories



**PSU1SM**  
DC12V 1A Regulated Switch  
Mode Power Supply



**SSMPJB**  
Stainless Steel Multi-  
Purpose Junction Box