

SSAHD2DVAF

DOME CAMERA

2MP Stainless Steel AHD IR Dome Camera with 2.8–12mm Varifocal Auto Focus Lens



Key Features

- 1/2.8" Sony Starvis CMOS image sensor
- Full HD (1920 × 1080) resolution
- Auto compensation and long range transmission
- Stainless steel body (AISI 316L grade)
- 24 pcs pearl LED's
- 2.8~12mm DC auto iris motorised megapixel lens
- True day & night with ICR mechanism
- Excellent low illumination performance
- 3D DNR (Digital Noise Reduction)
- Sens-up
- D-WDR (Digital Wide Dynamic Range)
- IP67 ingress protection
- DC12V
- NDAA compliant

The Genie SSAHD2DVAF is a 2MP AHD dome camera with a 2.8–12mm varifocal auto focus lens. The body is 316 grade stainless steel making this camera an ideal choice for applications in harsh environments.



Specification

Camera

Image Sensor	1/2.8" Sony Starvis CMOS sensor
Scanning System	Progressive
Resolution	1080p
Minimum Illumination	Colour : 1.0 Lux, B&W : 0.5 Lux, Colour DSS : 0.002 Lux, B&W DSS : 0.0008 Lux
Lens	2.8~12mm motorised DC auto iris lens (ICR)
S / N Ratio	More than 50dB (AGC Off)
Video Output	Universal AHD, CVI, TVI: 1080p, 720p Analogue: NTSC/ PAL CVBS

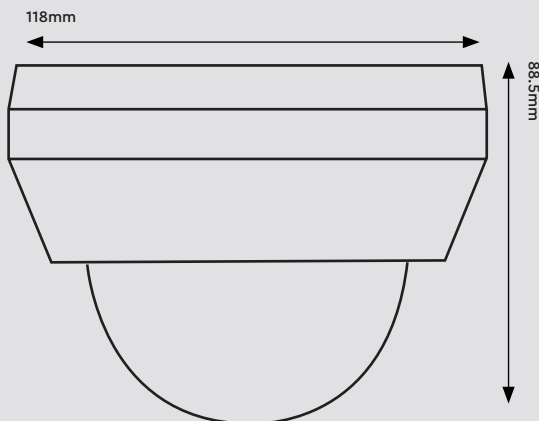
Others

Ingress Protection	IP67
Power Supply	DC12V ($\pm 10\%$)
Power Consumption	Max 4.0W
Working Environment	Temperature: $-10^{\circ}\text{C} \sim 50^{\circ}\text{C}$, Humidity: 10 % \sim 85 %
Dimensions	118 \times 88.5 mm
Weight	1310g

Functions

Sens-Up	Off / x2 - x30
DNR	Off / Low / Middle / High
Backlight	Off / BLC / HSBLC
D-WDR	Off / 0-8
Motion Detection	Off / On
Privacy Mask	4 Masks

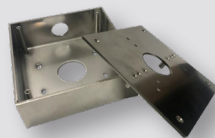
Dimensions



Accessories



PSU1SM
DC12V 1A Regulated Switch
Mode Power Supply



SSMPJB
Stainless Steel Multi-
Purpose Junction Box