

SSAHD2D

# DOME CAMERA

2MP Stainless Steel AHD IR Dome Camera with 3.6mm Fixed Lens



## Key Features

- 1/2.8" Sony Starvis CMOS image sensor
- Full HD Mega Pixel (1080p)
- Auto compensation and long range transmission
- Stainless steel body (AISI 316L grade)
- 3.6mm megapixel lens
- 24 pcs pearl LED's
- True day & night with ICR mechanism
- 3D DNR (Digital Noise Reduction)
- D-WDR (Digital Wide Dynamic Range)
- IP67 ingress protection
- DC12V
- Sens-Up
- 3 axis gimbal bracket
- Excellent Low illumination performance
- NDAA compliant

The Genie **SSAHD2D** is a stainless steel AHD 2MP dome camera with a 3.6mm fixed lens and 24 LED's. The body is 316 grade stainless steel making this camera an ideal choice for applications in harsh environments.



## Specification

---

### Camera

---

<b>Image Sensor</b>	1/2.8" Sony Starvis CMOS sensor
<b>Scanning System</b>	Progressive
<b>Resolution</b>	1080p
<b>Minimum Illumination</b>	Colour : 1.0 Lux, B&W : 0.5 Lux, Colour DSS : 0.002 Lux, B&W DSS : 0.0008 Lux
<b>Lens</b>	3.6mm megapixel fixed lens (ICR)
<b>S / N Ratio</b>	More than 50dB (AGC Off)
<b>Video Output</b>	Universal AHD, CVI, TVI: 1080p, 720p Analogue: NTSC/ PAL CVBS

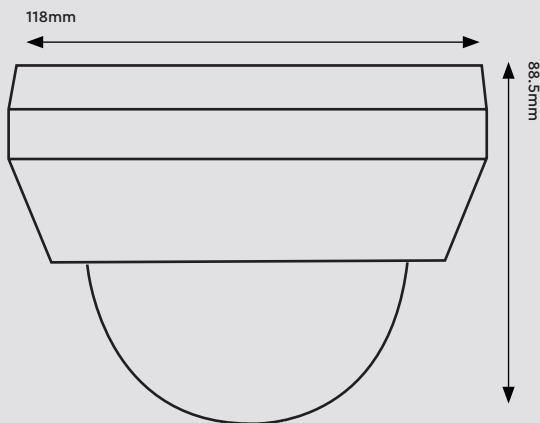
### Others

---

<b>Ingress Protection</b>	IP67
<b>Power Supply</b>	DC12V ( $\pm 10\%$ )
<b>Power Consumption</b>	Max 4.0W
<b>Working Environment</b>	Temperature: $-10^{\circ}\text{C} \sim 50^{\circ}\text{C}$ , Humidity: 10 % $\sim$ 85 %
<b>Dimensions</b>	118 $\times$ 88.5 mm
<b>Weight</b>	1310g

## Dimensions

---



### Functions

---

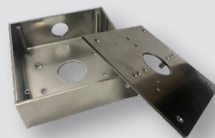
<b>Sens-Up</b>	Off / x2 - x30
<b>DNR</b>	Off / Low / Middle / High
<b>Backlight</b>	Off / BLC / HSBLC
<b>D-WDR</b>	Off / 0-8
<b>Motion Detection</b>	Off / On
<b>Privacy Mask</b>	4 Masks

## Accessories

---



**PSU1SM**  
DC12V 1A Regulated Switch  
Mode Power Supply



**SSMPJB**  
Stainless Steel Multi-  
Purpose Junction Box