

genie



The Marine Range

Genie's Marine Range is a series of cameras available in either a bullet or dome style with a fixed 3.6mm or varifocal 2.8–12mm lens. These cameras are made from 316 grade stainless steel, a perfect solution for any challenging environment.

Available in either AHD or Network IP technologies, the range consists of 7 cameras in total with an optional junction box.



3.6mm fixed lens and 2.8~12mm auto iris motorised lens options



IP67 ingress protection



Full HD (1920 × 2080) resolution



AHD: DC12V
IP: DC12V / PoE




True Day & Night with ICR mechanism

AHD MODELS

Specification / Model		 SSAHD2D	 SSAHD2DVAF	 SSAHD2B	 SSAHD2BVAF	
Camera	Image Sensor	1/2.8" Sony Starvis CMOS sensor				
	Scanning System	Progressive				
	Resolution	1080p				
	Minimum Illumination	Colour : 1.0 Lux, B&W : 0.5 Lux, Colour DSS : 0.002 Lux, B&W DSS : 0.0008 Lux			0.01 Lux at IR off (F1.0) 0.00 Lux at IR on	
	Lens	3.6mm megapixel fixed lens (ICR)	2.8~12mm motorised DC auto iris lens (ICR)	3.6mm megapixel fixed lens (ICR)	2.8~12mm motorised DC auto iris lens (ICR)	
	S / N Ratio	More than 50dB (AGC Off)				
	Video Output	Universal AHD, CVI, TVI: 1080p, 720p Analogue: NTSC/ PAL CVBS				
Functions	Sens-Up	Off / x2 - x30				
	DNR	Off / Low / Middle / High				
	Backlight	Off / BLC / HSBLC				
	D-WDR	Off / 0-8				
	Motion Detection	Off / On				
	Privacy Mask	4 Masks				
Others	Ingress Protection	IP67				
	Power Supply	DC12V (± 10%)				
	Power Consumption	Max 4.0W				
	Working Environment	Temperature: - 10°C ~ 50°C, Humidity: 10 % ~ 85 %				
	Dimensions	118 × 88.5 mm		58 × 126 × 104 mm		76 × 158.5 × 120 mm
	Weight	1310g		1200g		2080g



NETWORK IP MODELS

Specification / Model		 SSIP2DVAF	 SSIP2B	 SSIP2BVAF
Image	Colour Adjust	Bright / Contrast / Saturation / Sharp / Hue		
	White Balance	Auto / Indoor / Outdoor / Fluorescent		
	OSD Display	Text, Data, Time, Event, On / Off		
	Image Mirror	Normal / Mirror (H) / Flip (V) / Both (HV)		
Camera	Image Sensor	Sony 2MP Starvis		
	Size	1/2.8"		
	Electronic Shutter	Auto (1/15-1/15000), Suppress rolling, Manual		
	Scanning System	Progressive scan		
	Lens	2.8-12mm auto focus motorised lens	3.6mm fixed lens	2.8-12mm auto focus motorised lens
	Total Pixels	2000 (H) x 1121 (V), 2.24 Mega Pixels		
	Effective Pixels	1984 (H) x 1105 (V), 2.19 Mega Pixels		
	Privacy Area	On / Off (6 programmable zone)		
	Motion Detection	48 Zone, Sensitivity 1~5 Step, On / Off		
	Day & Night	Auto / Day (Colour) / Night (B&W), ICR control		
	Wide Dynamic Range	DWDR (1-5 Step) On / Off		
	3DNR	Digital Noise Reduction 1-63 Step		
External Video	CVBS 1.0Vp-p			
Others	Network Interface Protocol	Onvif Profile S compatible		
	Ingress Protection	IP67		
	Power Supply	DC12V +/- 10%		
	Working Environment	Operating : -10°C +50°C Preservation : -10°C +60°C Humidity : 0%-90%		
	Dimensions	118 x 88.5 mm	78 x 158.5 x 120 mm	
	Weight	1.3 Kg (Approx.)	1.52 Kg (Approx.)	

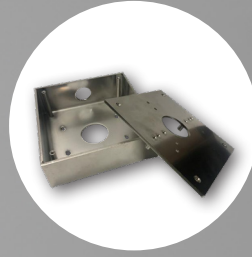
OPTIONAL ACCESSORIES



PSU1SM
DC12V 1A Regulated
Switch Mode Power
Supply



POE-INJ01S
PoE Single Port
Passive Injector - 30W



SSMPJB
Stainless Steel Multi-
Purpose Junction Box

APPLICATIONS

Our marine range of stainless steel cameras are the ideal solution for someone looking to install a CCTV system where increased resistance is required.

Examples include:

- Coastal applications where marine grade equipment is needed.
- Food processing plant where environments need to be hosed down regularly.
- Any tough environment which requires ruggedised equipment.



Tankers



Yachts



Cruise Ships



Ferries



Docks / Marinas



Food Processing Plant

Contact us today!

Sales +44(0)1707 330541
Enquiries sales@genieproducts.co.uk
Website www.genieproducts.co.uk

