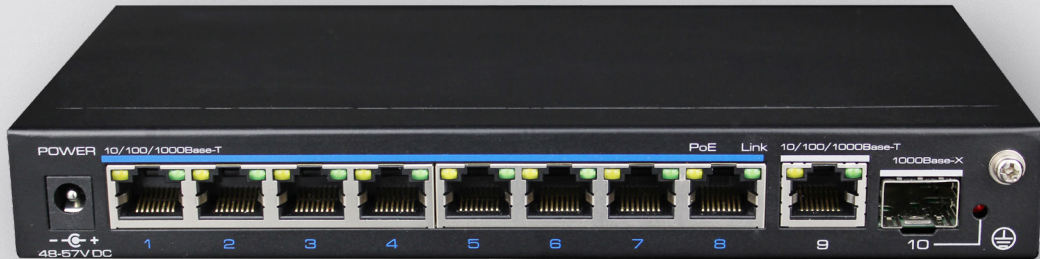


IP8GESP/E

IP ETHERNET SWITCH

8 Gigabit PoE Ethernet Switch



Key Features

- 8 Gigabit 10/100/1000 Base downlink electrical RJ45 ports
- Optical and electrical gigabit uplink port available
- Each port offers 30W per port
- High speed data forwarding
- Easy plug and play installation (Wall, din rail and rack mount options)
- Design for CCTV application
- Supports PoE and PoE+ products
- 6Kv surge protection

The Genie IP8GESP/E is an unmanaged ethernet switch designed for gigabit Ethernet access and PoE powered network. It provides 8 gigabit ethernet ports, 1 gigabit uplink port, and 1 gigabit SFP optical module.



Specification

Interfaces	8x Ethernet Ports – 10/100/1000 Mbps RJ45 Connection 1x Uplink Ports 1x Ethernet Ports 10/100/1000Mbps – RJ45 Connection 1x SFP – 1000Mbps
Network Protocol & Standards	IEEE802.3, IEEE802.3u, IEEE802.3ab, IEEE802.3Z, IEEE802.3X, IEEE 802.1Q, IEEE 802.1p, IEEE 802.3ad, IEEE 802.1D and IEEE 802.1.
Switch Capacity	20 Gbps
Packet Forwarding Rate	14 Mpps
Exchange Way	Store and Forward
Cache	1M
MAC Address	4K
PoE Standards	802.3af/at (PSE)
PoE Supply	End-Span
PoE Power Line Sequence	1/2 (+), 3/6(-)
PoE Output Power	Single-Port PoE Output<30W (54V DC), PoE Output power of the whole machine <120W
Lightning Protection	6KV Standards: IEC61000-4-5

ESD	Contract Discharge 6KV, Air Discharge 8KV, Implementation of Standards: IEC61000-4-2
Input Voltage	DC 48V-57V
Power Consumption	<5W
Working Temperature	-10°C-45°C
Storage Temperature	-40°C-85°C
Working Humidity	5%-95% (No Condensation)
Power Supply	AC100V – 240V (Mains)
Dimensions	200 × 101.88 × 27 mm
Weight	500g
Certification	CE, FCC, ROHS

Dimensions

