

2MP IP 18x PTZ with Starlight and PoE

GIP57S-U



Quick Start Guide

Please read these instructions carefully before operating the unit and keep for further reference.

1.0 How to Modify the IP Address3

 1.1. Set the Computer Network for Connection Testing3

 1.2 IE Log In.....4

 1.3 Modified IP.....5

2.0 Operation Method6

 2.1 Network PTZ Camera Connection.....6

 2.2 Search and Add IP Address6

3.0 Add Devices7

4.0 Setting the PTZ Camera Presets8

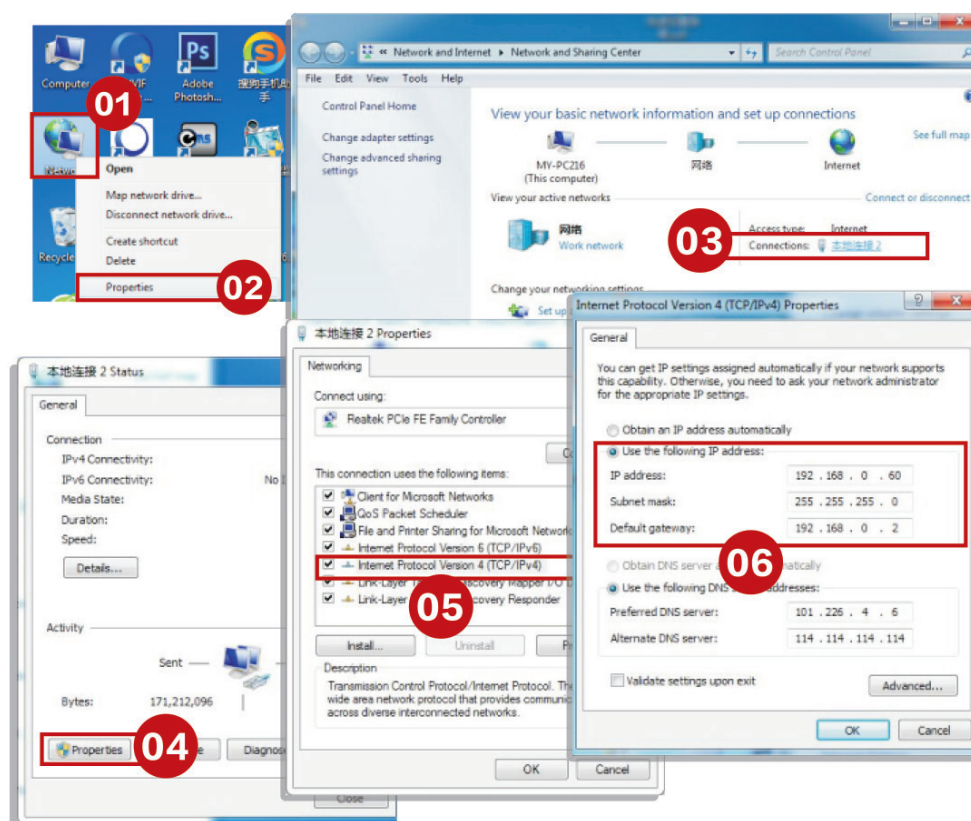
5.0 Set PTZ Patrol9

1.0 How to Modify the IP Address

Current there is two method on modifying PTZ IP address: one via website; another one via search tools.

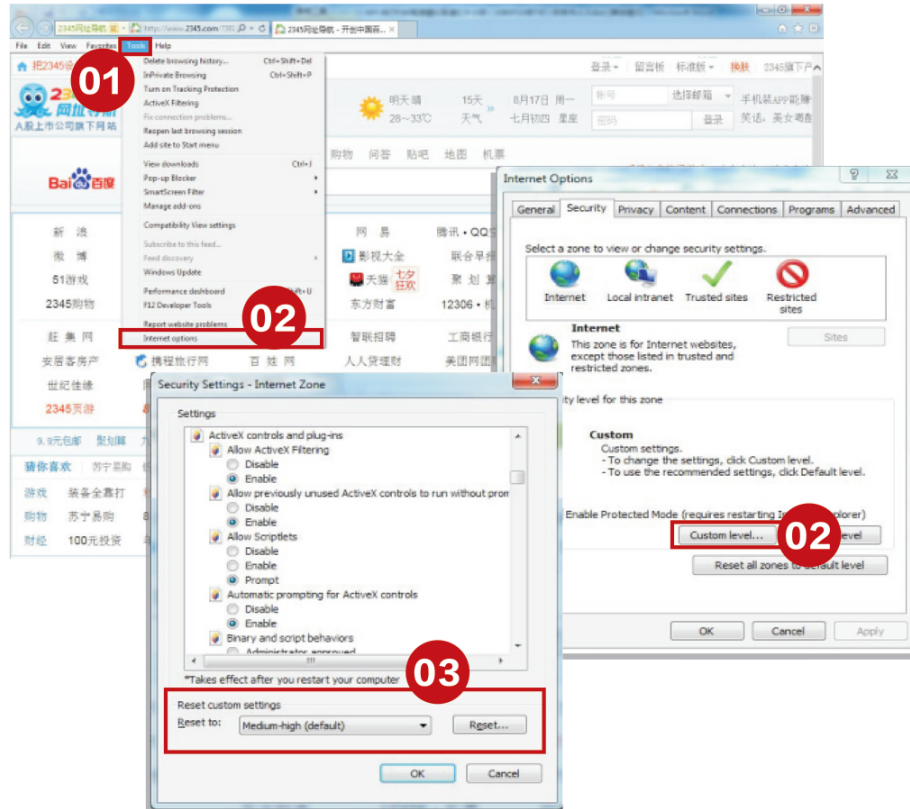
1.1. Set the Computer Network for Connection Testing

The PTZ camera default IP address is 192.168.0.200 ,so need to set the computer IP address in the same segment. Put the mouse on the computer desktop "network" icon, press the right mouse button to click on the "properties" then you can open the network and sharing center", then click "local connection", click "properties" in the pop-up dialog box (general),and then double-click the "Inter protocol version 4 (tcp/IPV4)" in the pop-up dialog box (Network). Last select "use the following IP address" to configure a 0 segment of the IP.

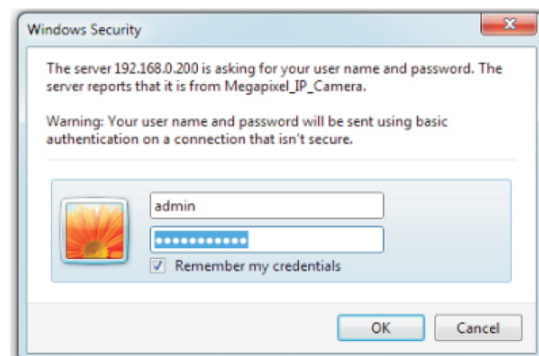


1.2 IE Log In

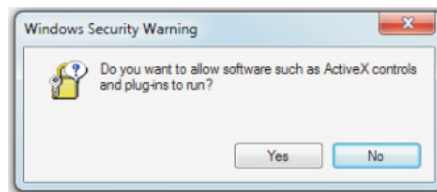
Open the IE browser, in the tools / security / custom level (C)... make the "ActiveX control and interpolation" all select "enable" or "tip", also make the security level to low



Input the network PTZ IP address (factory Default IP address: 192.168.0.200) then click "Enter", which will appear the browser landing interface. In the login interface input the network user name (default: admin) and password (default: admin) then click [log].



After the first time to enter the login interface, it will appear "Click here to download the plugin, please close the browser when installation" tip as the follow diagram, click to install the plugin. Last click to download the controls : install and run this controls once it was downloaded.

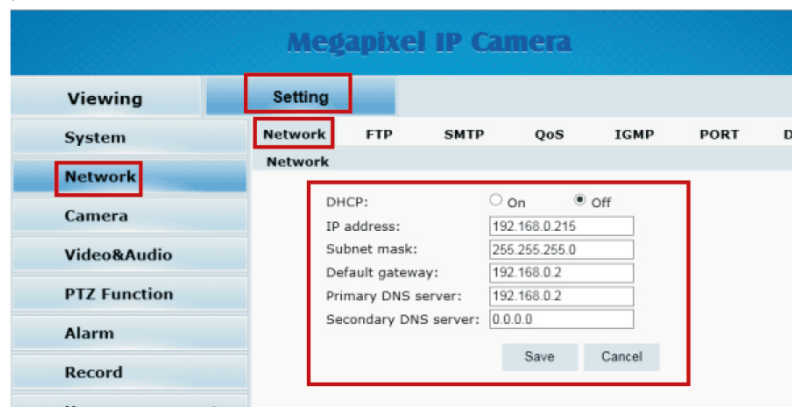


You can view the real time video by refreshing the website after the installation finished.



1.1.3 modified IP

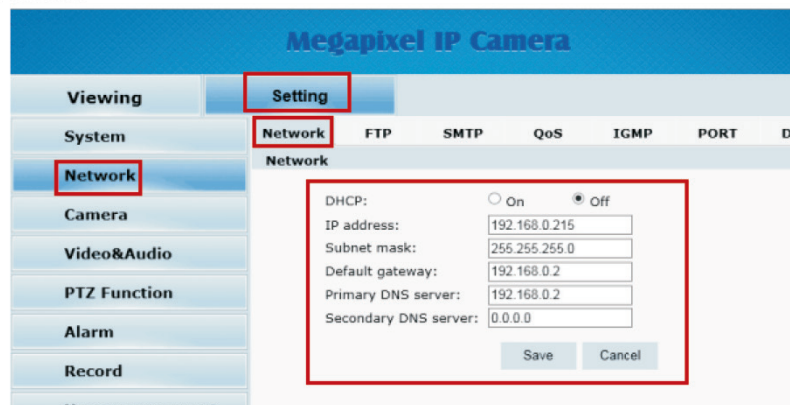
Then enter the settings – network –network, you can modify the PTZ IP address as below picture:



Mark: you also can use ONVIF test tools(ONVIF Device Manager" to search the PTZ IP address.

1.3 Modified IP

Then enter the settings – network –network, you can modify the PTZ IP address as below picture:

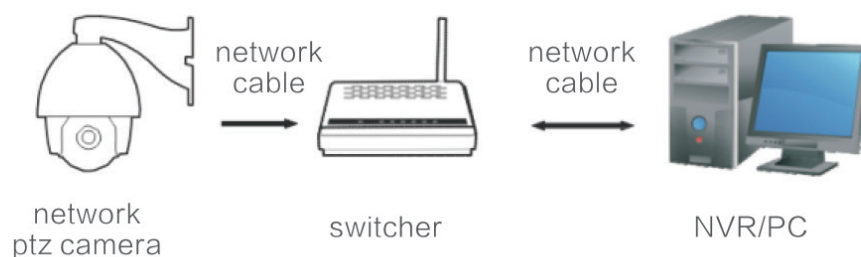


Mark: you also can use ONVIF test tools(ONVIF Device Manager" to search the PTZ IP address.

2.0 Operation Method

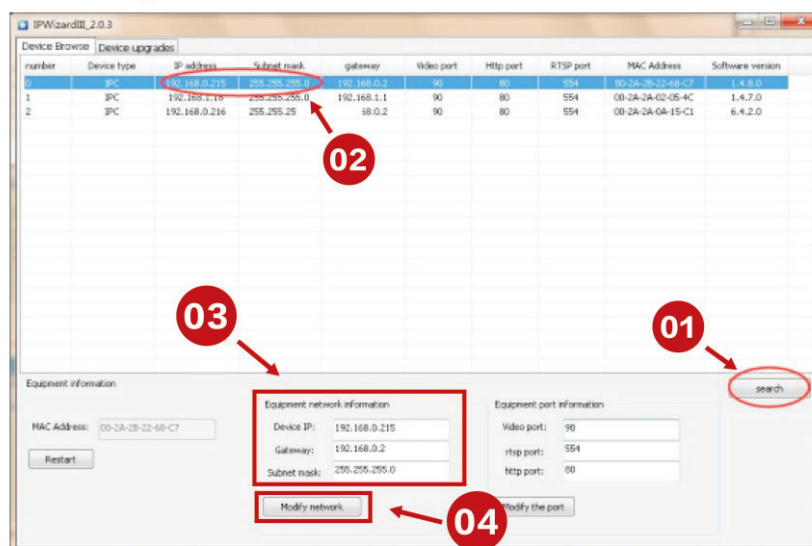
2.1 Network PTZ Camera Connection

Network PTZ camera default IP address: 192.168.0.200, user name: admin, pass word:admin;Normally working voltage under DC12V/4A ± 10%, the connection in LAN as below:



2.2 Search and Add IP Address

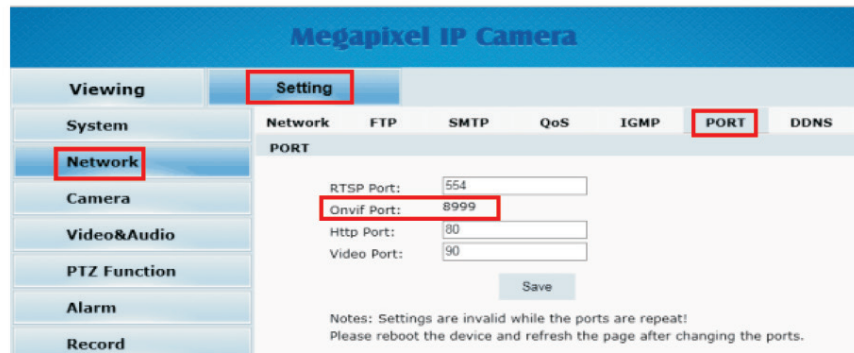
Network ptz camera fast access can use the search function in the support software. Using search function automatically search the IP address of the network ptz camera in the same LAN. Open the search tools, click search. Search out the IP, and then point to modify the IP, and then modify the network information inside the device, for example as following chart:



Mark: you also can use ONVIF test tools(ONVIF Device Manager” to search the PTZ IP address.

3.0 Add Devices

Take NVR which support ONVIF to add ptz, the main attention is the ONVIF port, user name and password these three items are to be kept consistent. PTZ ONVIF port can be seen on the IE Figure:



Megapixel IP Camera

Setting

PORT

RTSP Port: 554

Onvif Port: 8999

Http Port: 80

Video Port: 90

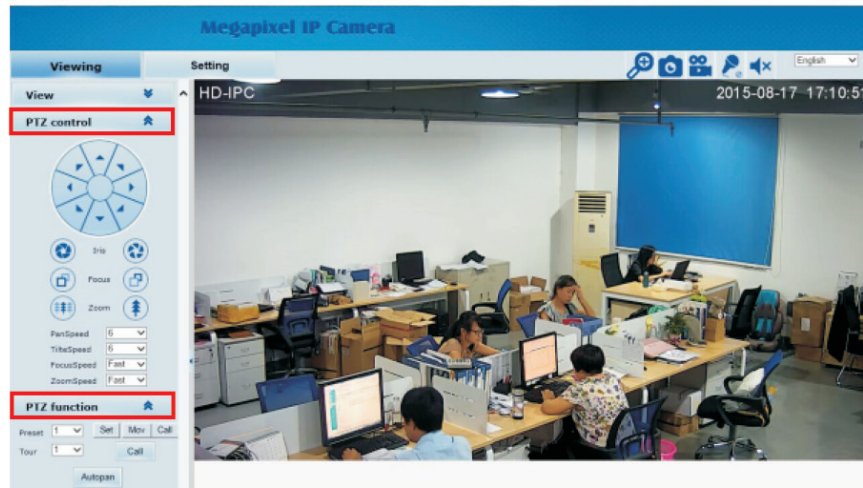
Save

Notes: Settings are invalid while the ports are repeat!
Please reboot the device and refresh the page after changing the ports.

Mark: the IP address of the NVR and the PTZ camera should be in the same LAN.

4.0 Setting the PTZ Camera Presets

Take IE interface for example: after you enter into the zoom camera page in the IE interface, click "PTZ control" on the left then will appear the direction key of controlling ptz, Figure: Operate the ptz run to the location where you want to set preset, then click the ptz function on the left, select the preset value you want to set, then click set to finish. Figure:



5.0 Set PTZ Patrol

[e.x]: Add 1–4 preset in the number one patrol, stay 30s, speed 40, operate as below steps:

Add preset in the patrol

- (1) set preset 92, call preset 1, start to set number 1 patrol
- (2) Call preset 1, add preset 1 to the number 1 patrol
- (3) Call preset 2, add preset 2 to the number 1 patrol
- (4) Call preset 3, add preset 3 to the number 1 patrol
- (5) Call preset 4, add preset 4 to the number 1 patrol
- (6) Set preset 92, call preset 9, save number 1 patrol

Set the preset stay time in the patrol

- (1) set preset 92, call preset 10, start to set the preset stay time
- (2) Call preset 30, set the preset stay time 30s.

Set the preset running speed in the patrol

- (1) set preset 92, call preset 11, start to set the preset running speed
- (2) Call preset 40, set the preset running speed 40

Note: All the network ptz camera support to call the number 35 preset and execute the patrol of 1–8 preset after March, 2015. E.x we only set 1.2.3 this three presets, call preset 35, then the ptz camera will cruising among this three presets. (Call preset 35 execute the patrol function correspond the first patrol, default stay time 10m, speed 50. If you want to change the stay time or patrol speed, please follow the above steps, thank you).

PTZ CD Data(HS) download link address:

<http://pan.baidu.com/s/1nt7r1CP>

Sales +44(0)1707 330541

Enquiries sales@genieproducts.co.uk

Website www.genieproducts.co.uk