





genie



The Focus Range

BULLET CAMERAS

Specification / Model		 PWIP2BV	 PWIPN4BVAF	 PWIPN4BVAFG	 PWIPN8BVAF
Camera	Image Sensor	1 / 2.9 "CMOS		1 / 2.7 "CMOS	
	Image Size	1920 × 1080		2560 × 1440	
	Electronic Shutter	1 / 25 s ~ 1 / 100000 s			
	Iris Type	Fixed Iris			
	Minimum Illumination	0.0035 Lux @ F1.2, AGC ON, 0 Lux with IR 0.013 Lux @ F2.31, AGC ON, 0 Lux with IR		0.011 Lux @ F1.2, AGC ON, 0 Lux with IR 0.04 Lux @ F2.26, AGC ON, 0 Lux with IR	
	Lens	2.8~12mm @ F1.4, Horizontal field of view: 88°~34.8°		2.8~12mm @ F1.4, Horizontal field of view: 94°~35.7°	
	Lens Mount	M12 or Ø14			
	Wide Dynamic Range	Digital WDR			
	BLC	Yes			
	HLC	Yes			
Digital NR	3D DNR				
Angle Adjustment	Pan: 0°~360°, Tilt: 0°~90°, Rotation: 0°~360°				
Image	Video Compression	H.265, H.264, MJPEG		H.265, H.264	
	Compression Standard	H.265: Main Profile @ Level 4.1 High Tier		H.264: Baseline Profile, Main Profile, High Profile	
	Resolution	1080p (1920 × 1080), 720p (1280 × 720), D1, CIF, 480 x 240		4MP (2560 × 1440), 3MP (2304 × 1296), 1080p (1920 × 1080), 720p (1280 × 720), D1, CIF, 480 × 240	
	Main Stream	60Hz : 1080p, 720p (1~30fps) 50Hz : 1080p, 720p (1~25fps)		60Hz: 4MP, 3MP, 1080p (1~30fps) 50Hz: 4MP, 3MP, 1080p (1~25fps)	
	Sub Stream	60Hz : D1, CIF, 480 × 240 (1~30fps) 50Hz: D1, CIF, 480 × 240 (1~25fps)		60Hz : 720p (1~15fps), D1 (1~30fps), CIF (1~30fps) 50Hz: 720p (1~12fps), D1 (1~25fps), CIF (1~25fps)	
	Third Stream	N/A		60Hz: D1/CIF/480×240 (1~30fps), 50Hz: D1/CIF/480×240 (1~25fps)	
	Bit Rate	64 Kbps ~ 6 Mbps		64 Kbps ~ 5 Mbps	
	Bit Rate Type	VBR / CBR			
	Audio Compression	G711A / U		N/A	
	Image Settings	ROI, Saturation, Brightness, Chroma, Contrast, Wide Dynamic, Sharpen, NR, etc. Adjustable through client software or web browser			
ROI	Each ROI to be configured separately				
Functions	Remote Monitoring	Web browsing, CMS remote control			
	Online Connection	Supports simultaneous monitoring for up to 3 users. Supports multi-stream real time transmission		Supports simultaneous monitoring for up to 4 users. Supports multi-stream real time transmission	
	Network Protocol	UDP, IPv4, IPv6, DHCP, NTP, RTSP, PPPoE, DDNS, SMTP, 802.1x, UPnP, HTTPs, HTTP, QoS			
	Interface Protocol	Onvif compatible			
	Intelligent Analytics	Video blur detection, Line crossing detection, Region intrusion detection		Region intrusion detection, Object removal detection, Abnormal video detection, Line crossing detection	
	Storage	Network remote storage, Micro SD card storage		Network remote storage	
	Smart Alarm	Motion detection, SD card error, SD card full		Motion detection	
	General Function	Watermark, IP address filtering, video mask, heartbeat, illegal login lock		Watermark, IP address filtering, video mask, heartbeat, password protection	
	PoE	Yes			
	IR Distance	30 ~ 50 m			
Interface	Network	RJ45			
	Audio	1CH audio input		No	
	Storage	Built-in Micro SD card slot, Up to 128GB		No	
	Hardware Reset	Yes		No	
Others	Ingress Protection	IP67			
	Power	DC12V / PoE, < 7.5W		DC12V / PoE, < 9W	
	Operating Environment	- 30 °C ~ 60°C (-22°F~140°F) Humidity: Less than 95% (Non-condensing)			

Genie's focus range has been designed to offer the security contractor a series of cameras with excellent image quality, a high range of features and functions, yet available at the most competitive prices. The range offers full HD 2MP, 4MP (2K) and 8MP (4K) eyeball and bullet style cameras with PoE and they can be used with ALL Genie NVR's.



DC12V / PoE



True Day & Night



Defog



Up to 4K resolution



Smart analytics

NDA
Compliant

Some models are
NDA compliant



Up to 50m IR night
view distance



Remote monitoring
on smart phone and
tablets



IP67 ingress
protection



2.8mm and
2.8~12mm
motorised lens
options

OPTIONAL ACCESSORIES



WJBSBWP
Water Resistant Junction
Box for Varifocal Bullet
and Fixed Eyeball
Cameras - White



WJBSBWPG
Water Resistant Junction
Box for Varifocal Bullet
Cameras and Fixed
Eyeballs - Grey



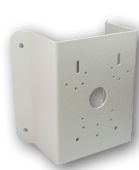
WIPSJB
Small Sized Junction Box
for Bullet and Eyeball
Cameras - White



WIPSJBG
Small Sized Junction Box
for Bullet and Eyeball
Cameras - Grey



WIPMPPM
Multi Purpose Pole Mount
Bracket - White



WIPMPCM
Multi Purpose Corner
Mount Bracket - White



POE-INJ01S
PoE Single Port Passive
Injector - 30W

EYEBALL CAMERAS

Specification / Model		 PWIPN2EB	 PWIPN2EBV	 PWIPN4EB	 PWIPN4EBG
Camera	Image Sensor	1 / 2.9 "CMOS		1 / 2.7 "CMOS	
	Image Size	1920 × 1080		2560 × 1440	
	Electronic Shutter	1 / 25 s ~ 1 / 100000 s			
	Iris Type	Fixed Iris			
	Minimum Illumination	0.0035 Lux @ F1.2, AGC ON, 0 Lux with IR 0.013 Lux @ F2.31, AGC ON, 0 Lux with IR		0.011 Lux @ F1.2, AGC ON, 0 Lux with IR 0.04 Lux @ F2.26, AGC ON, 0 Lux with IR	
	Lens	2.8 mm @ F2.0, Horizontal field of view: 107°	2.8~12mm @ F1.4, Horizontal field of view: 88°~ 34.8°	2.8 mm @ F2.0, Horizontal field of view: 110°	
	Lens Mount	M12	Φ14	M12	
	Wide Dynamic Range	Digital WDR			
	BLC	Yes			
	HLC	Yes			
	Defog	Yes			
	Digital NR	3D DNR			
	Angle Adjustment	Pan: 0°~360°, Tilt: 0°~75°, Rotation: 0°~360°	Pan: 0°~360°, Tilt: 0°~80°, Rotation: 0°~360°	Pan: 0°~360°, Tilt: 0°~75°, Rotation: 0°~360°	
	Image	Video Compression	H.265, H.264, MJPEG		H.265, H.264
Compression Standard		H.265: Main Profile @ Level 4.1 High Tier			
Resolution		1080p (1920 × 1080), 720p (1280 × 720), D1, CIF, 480 × 240		4MP (2560 × 1440), 3MP (2304 × 1296), 1080p (1920 × 1080), 720p (1280 × 720), D1, CIF, 480 × 240	
Main Stream		60Hz : 1080p, 720p (1~30fps), 50Hz : 1080p, 720p (1~25fps)		60Hz : 4MP, 3MP, 1080p (1~30fps), 50Hz : 4MP, 3MP, 1080p (1~25fps)	
Sub Stream		60Hz : D1, CIF, 480 × 240 (1~30fps), 50Hz: D1, CIF, 480 × 240 (1~25fps)		60Hz : 720p (1~15fps), D1 (1~30fps), CIF (1~30fps), 50Hz: 720p (1~12fps), D1 (1~25fps), CIF (1~25fps)	
Third Stream		N/A		60Hz : D1 / CIF / 480 × 240 (1~30fps), 50Hz: D1 / CIF / 480 × 240 (1~25fps)	
Bit Rate		64 Kbps ~ 6 Mbps		64 Kbps ~ 5 Mbps	
Bit Rate Type		VBR / CBR			
Audio Compression		G711A / U		N/A	
Image Settings		ROI, Saturation, Brightness, Chroma, Contrast, Wide Dynamic, Sharpen, NR, etc. Adjustable through client software or web browser			
ROI	Each ROI to be configured separately				
Functions	Remote Monitoring	Web browsing, CMS remote control			
	Online Connection	Supports simultaneous monitoring for up to 3 users. Supports multi-stream real time transmission		Supports simultaneous monitoring for up to 4 users. Supports multi-stream real time transmission	
	Network Protocol	UDP, IPv4, IPv6, DHCP, NTP, RTSP, PPPoE, DDNS, SMTP, FTP, HTTP, 802.1x, UPnP, HTTPs, QoS			
	Interface Protocol	Onvif compatible			
	Intelligent Analytics	Video blur detection, Line crossing detection, Region intrusion detection			
	Storage	Network remote storage, Micro SD card storage		Network remote storage	
	Smart Alarm	Motion detection, SD card error, SD card full		Motion detection	
	General Function	Watermark, IP address filtering, video mask, heartbeat, illegal login lock		Watermark, IP address filtering, video mask, heartbeat, password protection	
	PoE	Optional	Yes, IEEE802.3 af	Yes	
	IR Distance	20 ~ 30 m	30 ~ 50 m	20 ~ 30 m	
Interface	Network	RJ45			
	Audio	Built-in MIC x1			
	Storage	Built-in Micro SD card slot, Up to 128GB		No	
	Hardware Reset	Yes		No	
Others	Ingress Protection	IP67			
	Power	DC12V (PoE power supply optional), < 5.5W	DC12V / PoE, < 8W	DC12V (PoE power supply optional), < 5.5W	
	Operating Environment	- 30 °C ~ 60°C (-22°F~140°F) Humidity: Less than 95% (Non-condensing)			

OPTIONAL ACCESSORIES

		
PWIPN4EBVAF	PWIPN4EBVAFG	PWIPN8EBVAF2
		1 / 2.8" CMOS
		3840 × 2160
		0.05 Lux @ F1.4, AGC ON, 0 Lux with IR 0.032 Lux @ F1.2, AGC ON, 0 Lux with IR
2.8~12mm @ F1.4, Motorised zoom lens, Horizontal field of view: 94°~35.7°		2.8~12mm @ F1.4, motorised
Ø14		120dB
Pan: 0°~360°, Tilt: 0°~80°, Rotation: 0°~360°		
		H.265+, H.265, H.264+, H.264
		H.264: Baseline Profile, Main Profile, High Profile
		8MP (3840 × 2160), 6MP (3072 × 2048), 5MP (2592 × 1944), 4MP (2560 × 1440), 1080P (1920 × 1080), 720P (1280 × 720), D1, CIF, 480 × 240
		60Hz: 8MP, 6MP (1~20fps), 5MP, 4MP, 1080p (1~30fps), 50Hz: 8MP, 6MP (1~20fps), 5MP, 4MP, 1080p (1~25fps)
60Hz: D1 / CIF / 480 × 240 (1~30fps), 50Hz: D1 / CIF / 480 × 240 (1~25fps)		720p, D1, CIF, 480 × 240 (60Hz: 1~30fps, 50Hz: 1~25fps)
		D1/CIF/480×240(1~20fps)
		64 Kbps ~ 6 Mbps
		G711A / U
		3 ROI, each ROI to be configured separately
		Supports simultaneous monitoring for up to 10 users. Supports multi-stream real time transmission
		UDP, IPv4, IPv6, DHCP, NTP, RTSP, RTP, RTCP, ICMP, IGMP, PPPoE, DDNS, SMTP, FTP, SNMP, HTTP, 802.1x, UPnP, HTTPs, QoS
Region intrusion detection, Object removal detection, Abnormal video detection, Line crossing detection		Scene change, Video blur detection, Video colour cast detection, Line crossing detection, Intrusion detection
		Network remote storage, Micro SD card storage
		Motion detection, SD card error, SD card full
		Watermark, IP address filtering, video mask, heartbeat, password protection, image distortion correction, etc.
		Yes, IEEE802.3 af
30 ~ 50 m		
		1CH built-in MIC, 1CH audio input
		Built-in Micro SD card slot, Up to 256GB
		Yes
DC12V / PoE, < 9W		DC12V / PoE, < 10W



WJBSBWP Series
Water Resistant Junction Box for Varifocal Bullet and Fixed Eyeball Cameras - White or Grey

WIPSJB
Small Sized Junction Box for Bullet and Eyeball Cameras - White



WBEBV Series
Wall Bracket for Eyeball Cameras - White or Grey

WIPSWM
Surface Mount Wall Bracket (Junction Box NOT included) - White



WIPMPPM
Multi Purpose Pole Mount Bracket - White

WIPMPCM
Multi Purpose Corner Mount Bracket - White



WIPSCM
Ceiling Mount for Vandal Resistant Domes (Requires associated JB) - White

POE-INJ01S
PoE Single Port Passive Injector - 30W

APPLICATIONS

Our focus range of cameras are the ideal solution for someone looking to install a CCTV system where added security is required.

Examples include:



Residential Properties



Commercial Properties



Retail / Shops / Supermarkets



Leisure Centres



Banks



Police Station



Hospitals



Night Clubs / Bars / Pubs



Warehouse



Education



Car Parks



Manufacturing

Contact us today!

Sales +44(0)1707 330541
Enquiries sales@genieproducts.co.uk
Website www.genieproducts.co.uk

