

# 2MP H.265 IP LPR Camera with 7-22mm Motorised Lens with 50m IR

---

WIPX2LBVLPR



## Quick Start Guide

Please read these instructions carefully before operating the unit  
and keep for further reference.

Please read this instruction carefully before operating the product and keep it for further reference. All examples and pictures used here are for reference only.  
The contents of this manual are subject to change without notice.

### **CAUTION:**

- If the product does not work properly, please contact your dealer or the nearest service centre. Never attempt to disassemble the camera yourself. We shall not be responsible for any problems caused by unauthorised repair or maintenance.
- Do not allow water or liquid into the camera while in use.
- When using the product, you must be in strict compliance with the electrical safety regulations of the nation and region.
- When the product is mounted on wall or ceiling, the device needs to be firmly fixed.
- Make sure the power supply voltage is correct before using the camera.
- Do not drop the camera or subject it to any physical shock.
- If cleaning, please use a clean soft cloth with a little neutral detergent to wipe it gently.
- Do not aim the camera at the sun or in any area where there is bright lighting.
- The device may be burned out by a laser beam, so when any laser equipment is in use, make sure that the surface of the device will not be exposed to the laser beam.
- Do not place the camera in extremely hot, cold, dusty or damp locations, and do not expose it to high electromagnetic radiation.
- To avoid heat accumulation, good ventilation is required for operating environment.

1.0 Introduction.....4

    1.1 Product Features.....4

    1.2 Product Dimensions .....4

    1.3 Contents .....4

    1.4 Specification .....5

2.0 Overview.....6

3.0 Installation.....7

4.0 Network Connection .....8

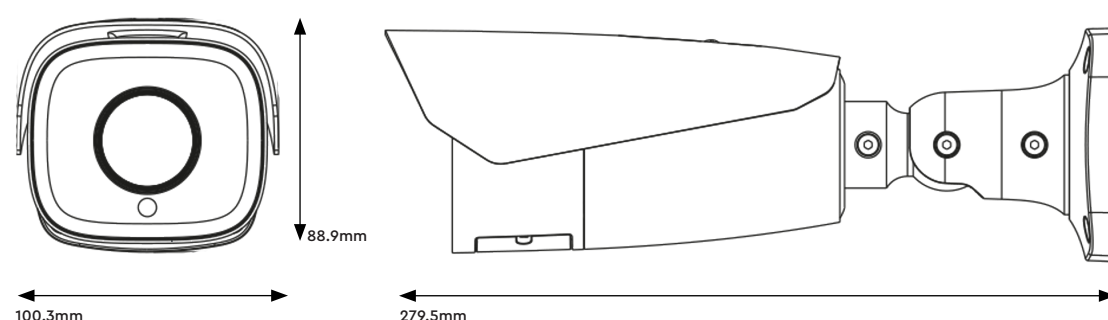
## 1.0 Introduction

The Genie WIPX2LBVLPR bullet style camera is a high quality IP camera especially designed to operate with the Genie "AI" NVR's and provide a very effective LPR (License Plate Recognition) system suitable for a host of applications including clubs, business car parks, private estates etc. etc. The camera utilises a motorised auto focus lens for ease of set up, and whilst it boasts long range IR the "Starlight" sensor used provides colour images in the darkest of environments.

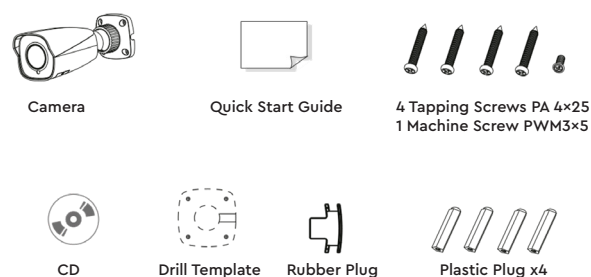
### 1.1 Product Features

- Starlight
- 1080p (1920 × 1080) @ 30fps
- Support Smart H.265/H.264 coding
- ICR auto switch, True day/night
- 50~70m IR night view distance, motorised zoom lens
- 3D DNR, true WDR, HLC, BLC and ROI coding
- Built-in micro SD card slot, up to 128GB
- 1 channel audio input and output, Hardware reset
- To be used in conjunction with an "AI" network video recorder
- IP67 ingress protection
- Supports three streams
- 1 channel alarm input and output
- Supports mobile surveillance by smart phones with iOS and Android OS
- Intelligent Analytics: Video abnormality (Video tampering, scene change), Licence plate recognition
- DC12V / PoE power supply

### 1.2 Product Dimensions



### 1.3 Contents

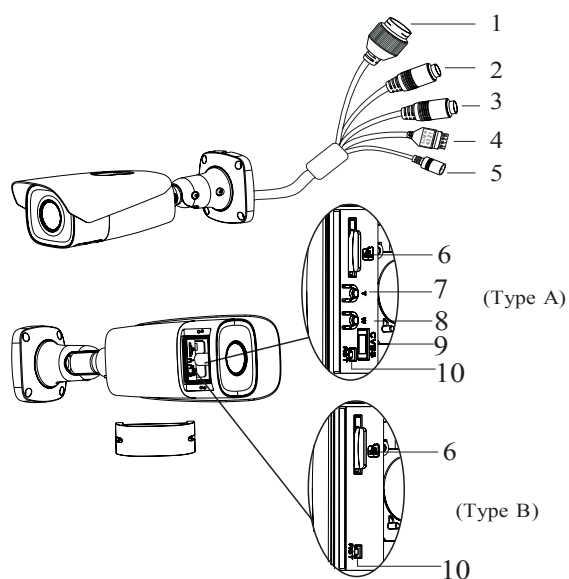


## 1.4 Specification

Camera	Image Sensor	1 / 2.8 "CMOS
	Image Size	1920 × 1080
	Electronic Shutter	1 / 25 s ~ 1 / 100000 s
	Iris Type	DC Iris
	Minimum Illumination	0.0026 Lux @ F1.2, AGC ON, 0 Lux with IR, 0.005 Lux @ F1.6, AGC ON, 0 Lux with IR
	Lens	Motorised zoom lens, 7-22mm @ F1.4
	Lens Mount	Ø14
	Field of View	Horizontal: 44°~17.6°
	Wide Dynamic Range	120dB
	BLC	Yes
	HLC	Yes
	Defog	Yes
	Digital NR	3D DNR
	Angle Adjustment	Pan: 0°~360°, Tilt: 0°~90°, Rotation: 0°~360°
Image	Video Compression	Smart H.265 / H.265+ / H.265 / Smart H.264 / H.264+ / H.264 / MJPEG
	H.264 Compression Standard	Baseline Profile / Main Profile / High Profile
	Resolution	1080p (1920 × 1080), 720p (1280 × 720), D1, CIF, 480 × 240
	Main Stream	60Hz : 1080p / 720p (1~30fps), 50Hz : 1080p / 720p (1~25fps), HFR Mode : 1080p / 720p (1~60fps / 50fps)
	Sub Stream	60Hz : 720p / D1 / CIF (1~30fps), 50Hz: 720p / D1 / CIF (1~25fps)
	Third Stream	60Hz : D1 / CIF / 480 × 240 (1~30fps), 50Hz : D1 / CIF / 480 × 240 (1~25fps)
	Bit Rate	64 Kbps ~ 6 Mbps
	Bit Rate Type	VBR / CBR
	Audio Compression	G711A/U
	Image Settings	ROI, Saturation, Brightness, Chroma, Contrast, Wide Dynamic, Sharpen, NR, etc. Adjustable through client software or web browser.
Functions	ROI	Each ROI to be configured separately
	Remote Monitoring	Web browsing, CMS remote control
	Online Connection	Supports simultaneous monitoring for up to 10 users. Supports multi-stream real time transmission
	Network Protocol	UDP, IPv4, IPv6, DHCP, NTP, RTSP, PPPoE, DDNS, SMTP, FTP, SNMP, 802.1x, UPnP, HTTP, HTTPS, QoS
	Interface Protocol	Onvif compatible
	Intelligent Analytics	License plate recognition, video abnormality detection (video tampering, scene change)
	Storage	Network remote storage, Micro SD card storage
	Smart Alarm	Motion detection, Sensor alarm, SD card full, SD card error, IP address conflict, Network disconnection
	General Function	Watermark, IP address filtering, video mask, heartbeat, password protection, non-photosensitive switch, image distortion correction
	PoE	Yes, (802.3af)
IR Distance	IR Distance	50~70m

LPR	Snapshot	Overview and cutout of plate for picture
	White List	10000
	Capture Speed Range	0~70km/h
Interface	Network	RJ45
	Video Output	No
	Audio	1CH audio input and output
	Alarm	1CH alarm input, 1CH alarm output
	Storage	Built-in Micro SD card slot, up to 128GB
	Hardware Reset	Yes
Others	Ingress Protection	IP67
	Power Supply	DC12V / PoE
	Power Consumption	< 11W
	Operating Environment	-30 °C ~ 60°C (-22 °F~140°F) Humidity: Less than 95 % (Non-Condensing)
	Dimensions	279.5 × 100.3 × 88.9 mm
	Weight	Approx. 1.04 Kg

## 2.0 Overview

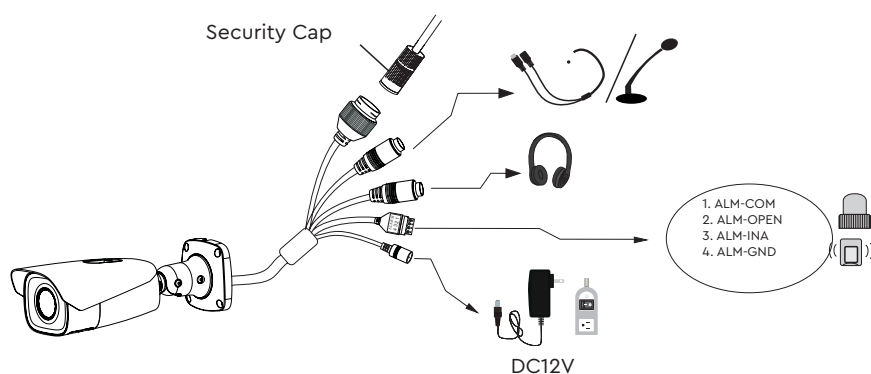


- 1. F Ethernet Connector
- 2. MIC-Audio Input
- 3. HP-Audio Output
- 4. Alarm Output/Input
- 5. Power Connector \*
- 6. Micro SD Card Slot

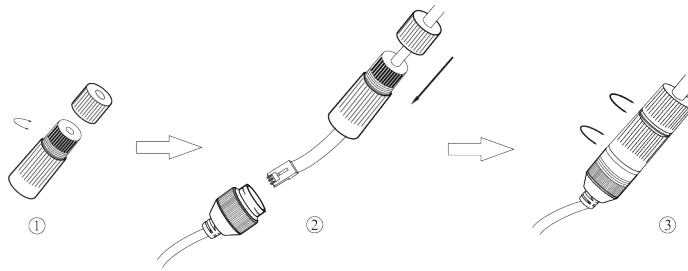
- 7. Zoom +\*
- 8. Zoom -\*
- 9. CVBS output (unavailable)
- 10. Reset

\* If the PoE switch is used to power the camera, DC12V power supply is not required.

\* Only some models support T&W buttons. If your camera doesn't have these two buttons, please skip 7 and 8.

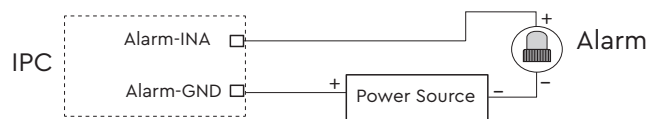
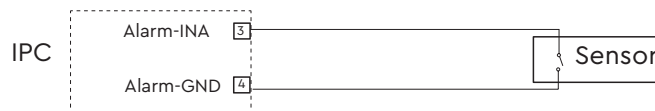


### Connecting Network Cable



1. Loosen the nut from the main element.
2. Run the network cable (without RJ 45 connector) through the both elements. Then crimp the cable with RJ 45 connector.
3. Connect the cable to the hermetic connector. Then tighten the nut and the main cover.

### Connecting Alarm Input/Output

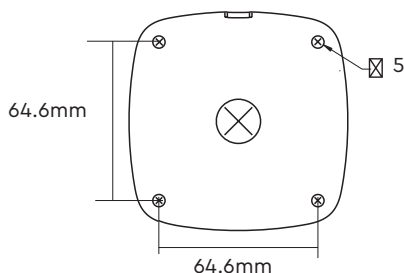




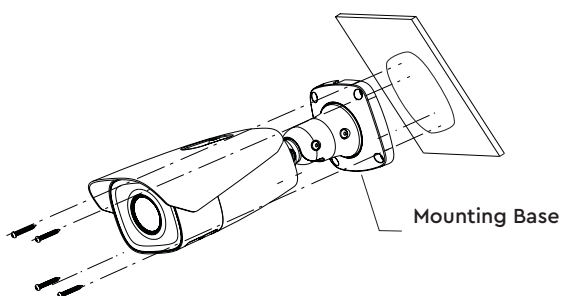
### 3.0 Installation

Please make sure that the wall or ceiling is strong enough to withstand 3 times the weight of the camera. Please install the camera in and under a dry environment.

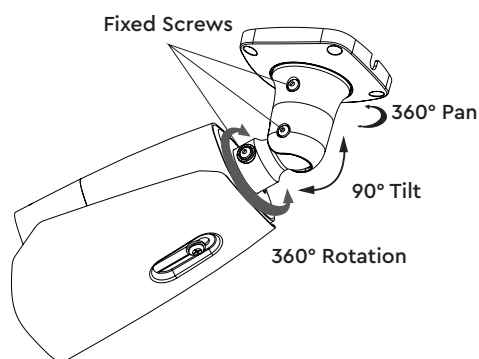
1. Attach the drill template to the place where you want to fix the camera. Then drill the screw holes and the cable hole on the wall according to the drill template.



2. Route and connect the cables.
3. Secure the mounting base with camera to the wall with the screws provided.

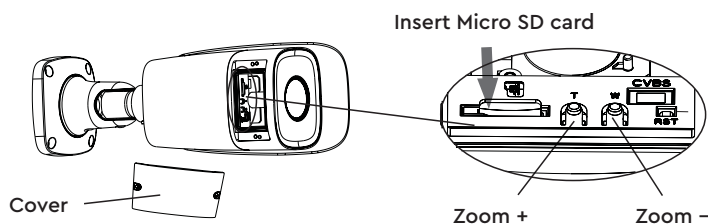


4. Bracket adjustment. Before adjustment, preview the image of the camera on a monitor and then loosen the fixed ring to adjust the view angle of the camera.



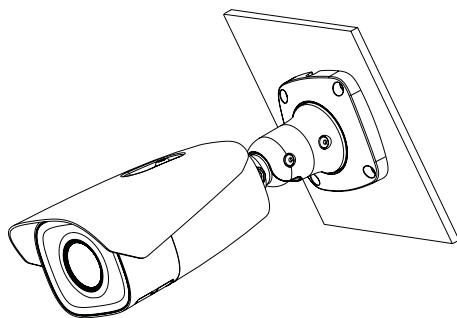
5. Open the cover of the camera as shown in the following figure and then insert a micro SD card.

6. Press T/W button to obtain an optimum image. Before adjustment, view the image of the camera on a monitor.



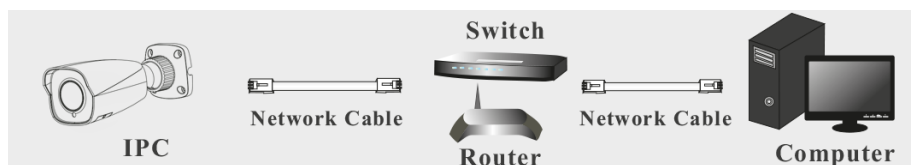
*Note: Only some models support T&W buttons. If your camera doesn't have these two buttons, please skip step 6.*

7. Install the cover back to the camera and fix it firmly with the screws. (Note that the cover should not be installed unevenly)

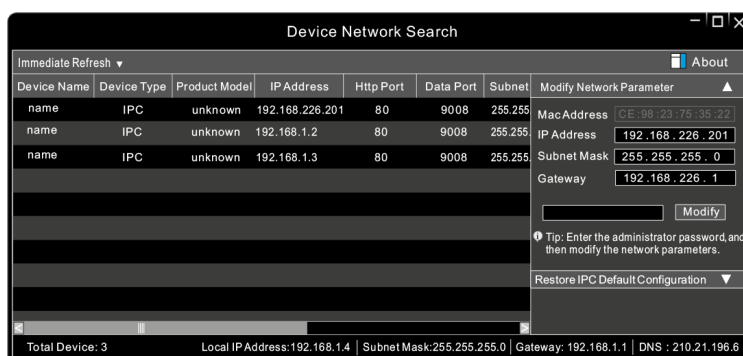


## 4.0 Network Connection

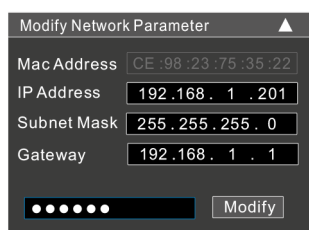
### Connecting the Network Cable



1. Make sure that the camera and the PC are well connected via LAN.
2. Find the IP-Tool from the CD and then install it in the computer. After that, run the IP Tool as shown below.



3. Modify the IP address. The default IP address of this camera is 192.168.226.201. Click the information of the camera listed in the above table to show the network information on the right hand. Modify the IP address and gateway of the camera and make sure its network address is in the same local network segment as that of the computer. Please modify the IP address of your device according to the practical situation.



For example, the IP address of your computer is 192.168.1.4. So the IP address of the camera shall be changed to 192.168.1.X and the gateway shall be changed to 192.168.1.1. After modification, please enter the password of the administrator and click "Modify" button to modify the settings. The default password of the administrator is "123456".

4. Double-click the camera listed in the IP-Tool or manually enter the IP address in the address bar of the web browser to connect IP-CAM. Then follow directions to download and install the plugin. Enter the username and password in the login interface. The default username is admin; the default password is 123456.

**Sales** +44(0)1707 330541

**Enquiries** [sales@genieproducts.co.uk](mailto:sales@genieproducts.co.uk)

**Website** [www.genieproducts.co.uk](http://www.genieproducts.co.uk)