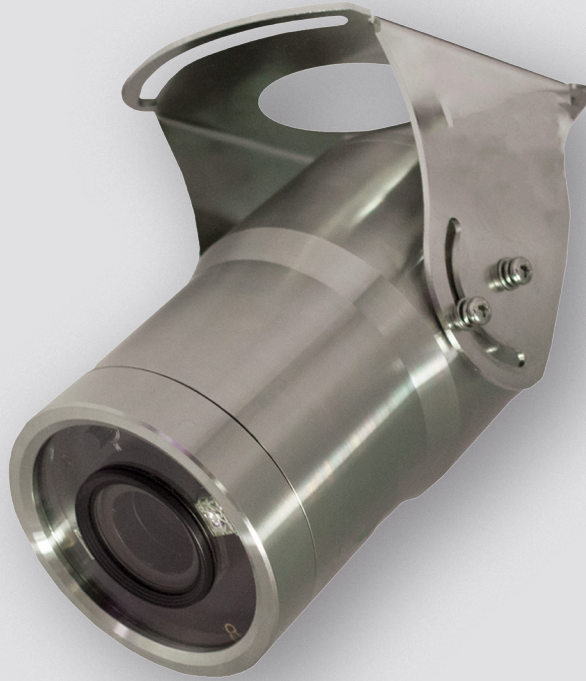


SSIP2BVAF

BULLET CAMERA

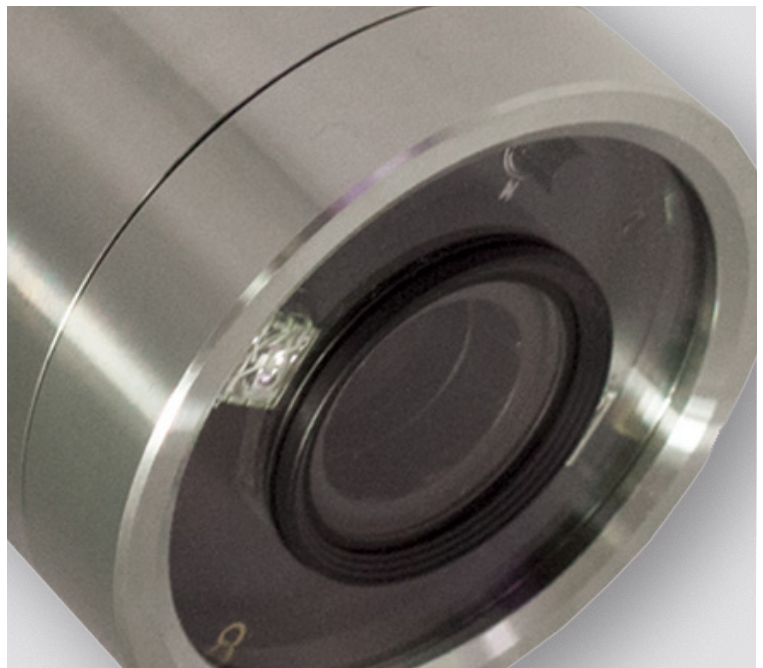
2MP Stainless Steel IP IR Bullet Camera with 2.8–12mm Auto Focus Lens



Key Features

- 1/2.8" Sony 2MP Starvis image sensor
- 1080p full HD resolution
- 2.8–12mm megapixel auto focus motorised lens
- Triple Codec (H.264 / MPEG4 / MJPEG)
- True day & night with ICR mechanism
- D-WDR (Digital Wide Dynamic Range)
- 3DNR (Digital Noise Reduction)
- DC12V / PoE operation
- 316 grade stainless steel housing
- IP67 ingress protection
- Wall mount bracket option
- NDAA compliant

The Genie **SSIP2BVAF** is a 2MP stainless steel IP IR bullet camera with a 2.8–12mm auto focus lens using the latest Starvis image sensor. The body is 316 grade stainless steel making this camera an ideal choice for applications in harsh environments.



Specification

Image

Colour Adjust	Bright / Contrast / Saturation / Sharp / Hue
White Balance	Auto / Indoor / Outdoor / Fluorescent
OSD Display	Text, Data, Time, Event, On / Off
Image Mirror	Normal / Mirror (H) / Flip (V) / Both (HV)

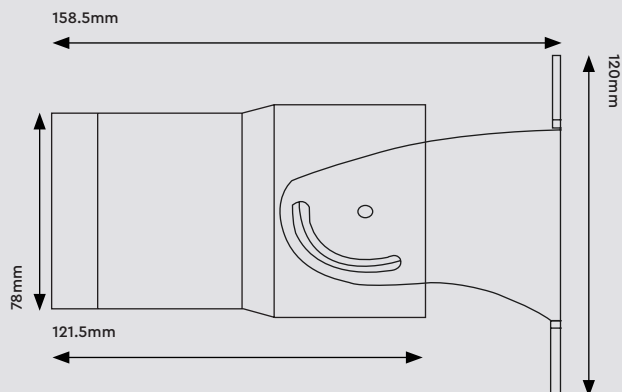
Others

Network Interface Protocol	Onvif Profile S compatible
Ingress Protection	IP67
Power Supply	DC12V +/- 10%
Working Environment	Operating : -10°C +50°C Preservation : -10°C +60°C Humidity : 0%-90%
Dimensions	78 × 158.5 × 120 mm
Weight	1.52 Kg (Approx.)

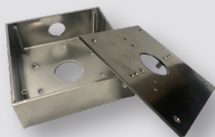
Camera

Image Sensor	Sony 2MP Starvis
Size	1/2.8"
Electronic Shutter	Auto (1/15-1/15000), Suppress rolling, Manual
Scanning System	Progressive scan
Lens	2.8-12mm auto focus motorised lens
Total Pixels	2000 (H) x 1121 (V), 2.24 Mega Pixels
Effective Pixels	1984 (H) x 1105 (V), 2.19 Mega Pixels
Privacy Area	On / Off (6 programmable zone)
Motion Detection	48 Zone, Sensitivity 1-5 Step, On / Off
Day & Night	Auto / Day (Colour) / Night (B&W), ICR control
LPR	Auto 1/15 - 1/1900, On / Off
Wide Dynamic Range	DWDR (1-5 Step) On / Off
3DNR	Digital Noise Reduction 1-63 Step
External Video	VBS 1.0Vp-p

Dimensions



Accessories



SSMPJB

Stainless Steel Multi-Purpose Junction Box