

GIP2SMOD

COVERT CAMERA

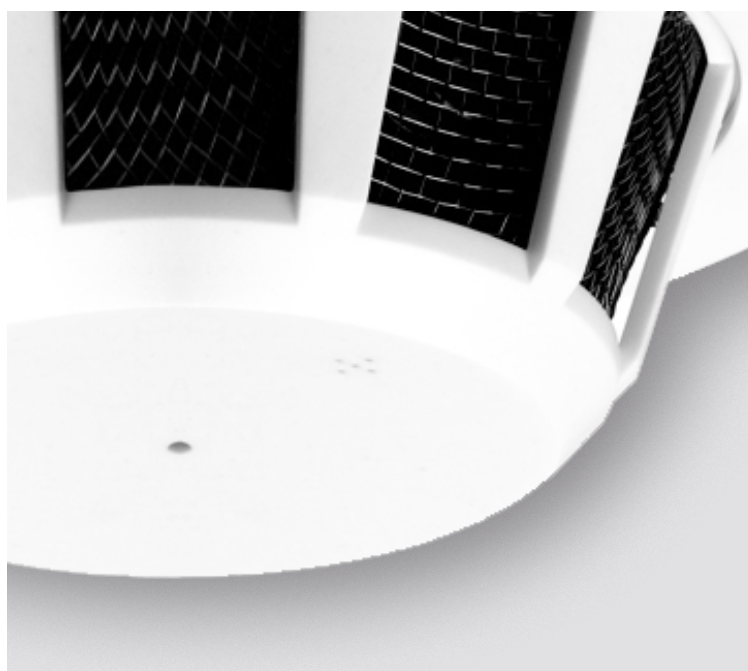
2MP H.264 Dual Stream Camera in a Smoke Detector Case – Downwards View



Key Features

- Full HD (1080p) IP Network board
- 1/ 2.8" 2MP progressive CMOS sensor
- H.264 / MJPEG dual streaming
- Minimum illumination: 0.1 Lux (Colour)
- WDR, D&N, AGC, BLC, HLC, DNR, Sens-Up
- 32x32 one IP board (Video only)
- Motion detection / privacy zone
- Optional 32x32 sub board for audio & alarm
- Downwards view
- NDAA compliant

The Genie GIP2SMOD is a 2MP dual stream 1080p conical pinhole camera housed in a smoke detector case. The unit is suitable for discreet and covert operations.



Specification

Camera

Image Sensor	1/2.8" Progressive Scan CMOS Sensor (Sony IMX307)
Effective Pixels	1920 (H) x 1080 (V) Approx. 2.13M pixels
Minimum Illumination	Colour Mode: 0.1 Lux B&W Mode: 0.01 Lux
Lens Type	3.7mm conical pinhole lens M12 board lens (2.8mm, 3.6mm, 4.3mm, 6mm, 8mm)
Shutter Speed	1/25 ~ 30,000sec
Motion Detection	Yes (4 areas)
Privacy Zone	Yes (4 areas)
Image Enhancement	AE, AWB, WDR, DNR, AGC, Brightness, Contrast, Stabilisation, Sharpness, Day & Night, Sens-Up, BLC, HLC

Video

Video Compression	H.264 (Baseline/Main Profile), MJPEG
Streaming (Dual)	Primary (H.264) : Max. 1920 x 1080 Secondary (H.264 or MJPEG) : Max. 800 x 600
Resolution and Frame Rate	Primary (H.264) : 25fps @ 1080p, 720p, 800 x 600, 640 x 480, 320 x 240 Secondary (H.264 or MJPEG) : 25fps @ 800 x 600, 640 x 480, 320 x 240
Bit Rate / Control	512Kbps ~ 10Mbps / CBR, VBR

Accessories



IPB2DIDO

Specific Audio PCB
with Mic for IPB2CPV32
Cameras

Sub Board (Option)

Audio	G.711 Compression, 2 way audio (MIC In / Spk Out, line level)
Alarm	DI/DO (Alarm In, Relay Out)

Interface

Ethernet	10/100-Base-T Ethernet (Auto-Sensing)
-----------------	---------------------------------------

Network

Support Protocol	TCP/IP, UDP, IPv4, HTTP, DNS, NTP, IGMP, RTP/RTSP, DHCP, WS- Discovery, Onvif Profile S compatible
3rd Party Integration	Onvif Profile S 2.4, CGI
Login Authority	Administrator, Operator, Viewer
Maximum Streaming User	4

Others

Operating Temperature	-10°C ~ +50°C
Operating Humidity	0~80% (Non-condensing)
Power Source	DC12V/1.6W