

GIP2SMO

# COVERT CAMERA

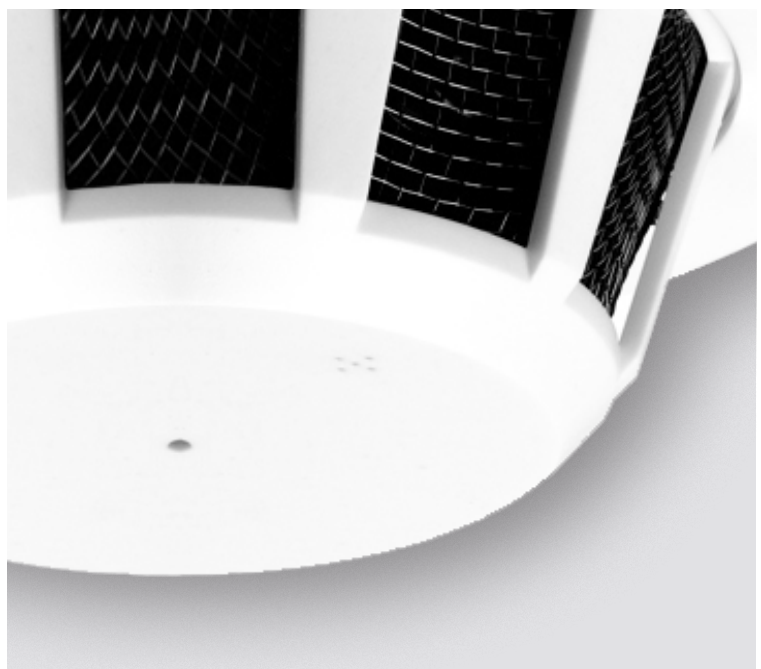
2MP H.264 Dual Stream Camera in a Smoke Detector Case – Side View



## Key Features

- Full HD (1080p) IP Network board
- 1/ 2.8" 2MP progressive CMOS sensor
- H.264 / MJPEG dual streaming
- Minimum illumination: 0.1 Lux (Colour)
- WDR, D&N, AGC, BLC, HLC, DNR, Sens-Up
- 32x32 one IP board (Video only)
- Motion detection / privacy zone
- Optional 32x32 sub board for audio & alarm
- Side view
- NDAA compliant

The Genie **GIP2SMO** is a 2MP dual stream 1080p conical pinhole camera housed in a smoke detector case. The unit is suitable for discreet and covert operations.



## Specification

### Camera

<b>Image Sensor</b>	1/2.8" Progressive Scan CMOS Sensor (Sony IMX307)
<b>Effective Pixels</b>	1920 (H) x 1080 (V) Approx. 2.13M pixels
<b>Minimum Illumination</b>	Colour Mode: 0.1 Lux B&W Mode: 0.01 Lux
<b>Lens Type</b>	3.7mm conical pinhole lens M12 board lens (2.8mm, 3.6mm, 4.3mm, 6mm, 8mm)
<b>Shutter Speed</b>	1/25 ~ 30,000sec
<b>Motion Detection</b>	Yes (4 areas)
<b>Privacy Zone</b>	Yes (4 areas)
<b>Image Enhancement</b>	AE, AWB, WDR, DNR, AGC, Brightness, Contrast, Stabilisation, Sharpness, Day & Night, Sens-Up, BLC, HLC

### Video

<b>Video Compression</b>	H.264 (Baseline/Main Profile), MJPEG
<b>Streaming (Dual)</b>	Primary (H.264) : Max. 1920 x 1080 Secondary (H.264 or MJPEG) : Max. 800 x 600
<b>Resolution and Frame Rate</b>	Primary (H.264) : 25fps @ 1080p, 720p, 800 x 600, 640 x 480, 320 x 240 Secondary (H.264 or MJPEG) : 25fps @ 800 x 600, 640 x 480, 320 x 240
<b>Bit Rate / Control</b>	512Kbps ~ 10Mbps / CBR, VBR

### Accessories



#### IPB2DIDO

Specific Audio PCB  
with Mic for IPB2CPV32  
Cameras

### Sub Board (Option)

<b>Audio</b>	G.711 Compression, 2 way audio (MIC In / Spk Out, line level)
<b>Alarm</b>	DI/DO (Alarm In, Relay Out)

### Interface

<b>Ethernet</b>	10/100-Base-T Ethernet (Auto-Sensing)
-----------------	---------------------------------------

### Network

<b>Support Protocol</b>	TCP/IP, UDP, IPv4, HTTP, DNS, NTP, IGMP, RTP/RTSP, DHCP, WS- Discovery, Onvif Profile S compatible
<b>3rd Party Integration</b>	Onvif Profile S 2.4, CGI
<b>Login Authority</b>	Administrator, Operator, Viewer
<b>Maximum Streaming User</b>	4

### Others

<b>Operating Temperature</b>	-10°C ~ +50°C
<b>Operating Humidity</b>	0~80% (Non-condensing)
<b>Power Source</b>	DC12V/1.6W