

AC2200SC

# BIOMETRIC READER

Viridi IP65 Bluetooth Fingerprint and Card Terminal with Camera



## Key Features

- Patented fake fingerprint detection
- IP65 ingress protection
- Bluetooth support with UNIS-B Plus app for admins and V-CARD app for mobile key users
- Anti-tamper
- Paxton approved integration
- On-board camera for transaction snap shots
- Open supervised device protocol (OSDP) support that allows peripheral devices to interface with control panels or other security management systems
- Built-in 13.56MHz card reader
- Supports Biometric, RFID or Bluetooth as access methods
- Integrates with various Access Control systems via Wiegand
- Networkable or standalone
- Wiegand in and out

The **AC2200SC** is a premium outdoor fingerprint recognition and card terminal enclosed in an IP65 housing keeping out dust and moisture. The terminal uses Bluetooth and can operate either standalone, networked or with a third party access control system.



## Specification

### Performance

<b>CPU</b>	ARM9, 4000MHz
<b>Operating Software (Server Solution)</b>	UNIS
<b>Memory</b>	32MB NOR, DDR, 64MB

### Others

<b>Ingress Protection</b>	IP65
<b>FRR / FAR</b>	0.1% / 0.0001%
<b>Resolution</b>	500dpi
<b>Embedded Camera</b>	Yes
<b>LCD</b>	1.77" Colour LCD
<b>Fingerprint Sensor</b>	Optical sensor, Platen area: 14.8 × 17.9 mm
<b>Operating Temperature</b>	-20°C~60°C
<b>Operating Voltage</b>	DC12V
<b>Power Consumption</b>	Stand By: 90mA, Active: 110mA
<b>Certificates</b>	KE, CE, FCC, RoHS
<b>Dimensions</b>	58 × 187.9 × 51.6 mm

### Interface

<b>Communication</b>	TCP/IP, Bluetooth, Wiegand In/Out, RS485, USB
<b>Log Capacity</b>	100,000
<b>Image Log</b>	10,000
<b>Fingerprints (Templates)</b>	20,000 (1:1), 10,000 (1:N)
<b>Maximum Users</b>	10,000
<b>Card</b>	10,000 (1:1) / (1:N)
<b>RFID Card Option</b>	125KHz EM, 13.56MHz Smart Card, Felica, DESfire

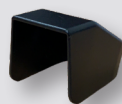
## Dimensions



## Accessories



**SH2000**  
External Stainless Steel  
Surface Enclosure for  
AC2000SC / AC2200SC



**ACSC2**  
Sunlight Cover for  
Fingerprint Module fits  
AC2000SC & AC2200SC