

HDSDI02

# CONVERTER

Single Channel HD-SDI-HDMI Converter



## Key Features

- Supports 3G-SDI, HD-SDI, SD-SDI video format.
- Built-in equaliser to increase the working distance and transmission stability.
- Built-in BNC loop-out port for an additional HD-SDI display or HDSDI02

The Genie HDSDI02 is a HD-SDI to HDMI converter that enables users to use a cost effective HDMI monitor to display an SDI A/V source. It also has a BNC loop-out port for an extra SDI display. It's a perfect solution for CCTV HD-SDI camera and broadcast video monitoring.



genie

## Specification

### Supports

<b>Compliance</b>	SMPTE 259M, SMPTE 292M, SMPTE 424M
<b>Maximum Video Resolution</b>	3G-SDI, 1080p @ 60Hz
<b>Maximum Transmission Distance</b>	100m at 3G-SDI

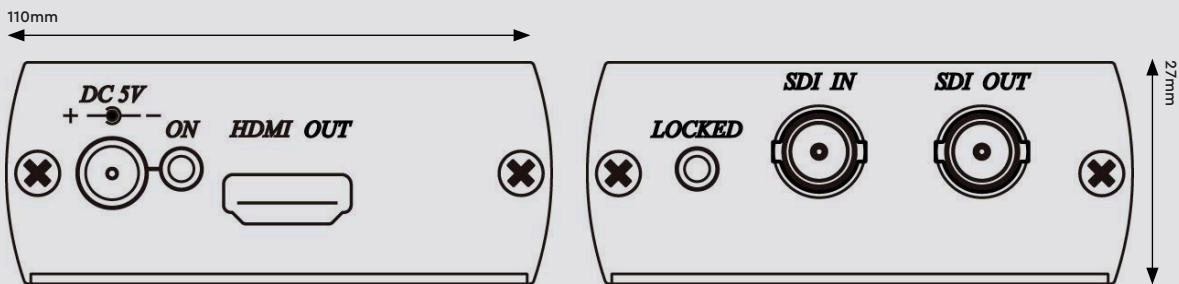
### Ports & Interfaces

<b>Video Input</b>	1 x BNC
<b>Video Output</b>	1 x HDMI Type A
<b>Video Loop-out</b>	1 x BNC

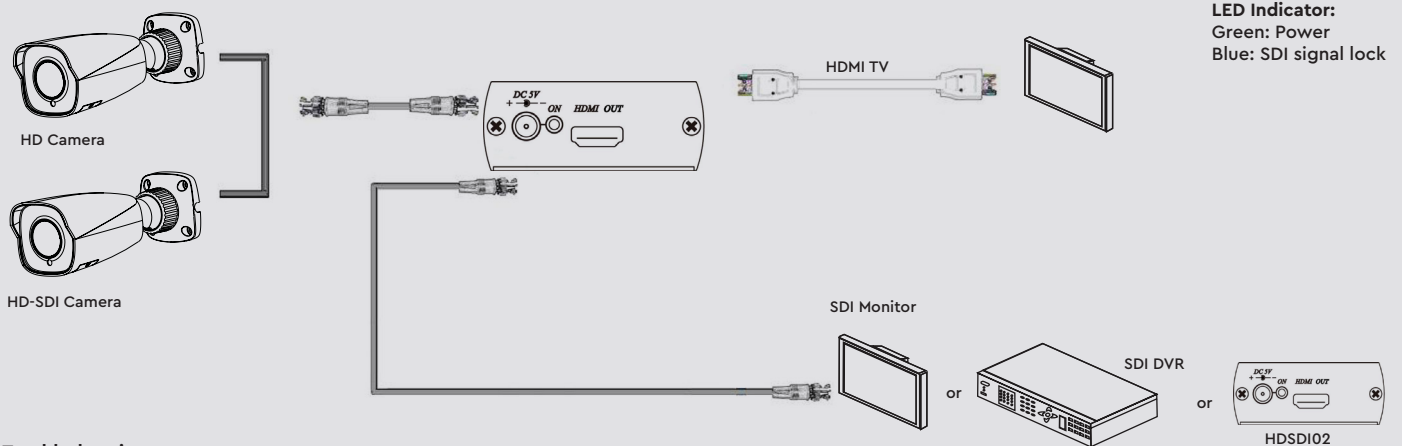
### Others

<b>Power Supply</b>	DC5V, 1A
<b>Power Consumption</b>	750mA (Max)
<b>Temperature</b>	Operation: 0 to 55°C, Storage: -20 ~ 85°C, Humidity: Up to 95%
<b>Dimensions</b>	67 × 110 × 27 mm
<b>Weight</b>	200g

### Dimensions



### Application



#### Troubleshooting

HDSDI02: HDMI output resolution and frequency is same as SDI input, if your TV monitor does not support SDI input resolution and frequency, then it won't show a picture on the monitor.

For example: Under HD-SDI camera application, if your TV monitor not support 1080p @ 25Hz or 1080p @ 30Hz, then the monitor won't display. Please adjust your HD-SDI camera output resolution to 1080i or 720p.

#### Cable

Link cable recommend to use high quality 75Ω Coaxial Cable, low quality coaxial cable may cause signal loss and effect transmission distance and reliability.

#### Working Distance:

Max. distance via high quality 75Ω Coaxial Cable (Belden 1694A RG6U Testing)

SD resolution (270Mbps) – 300m  
HD resolution (1.45Gbps) – 200m  
Full HD resolution (2.97Gbps) – 100m