

AC2000SC

# BIOMETRIC READER

Viridi IP65 Bluetooth Fingerprint and Card Terminal



## Key Features

- Patented fake fingerprint detection
- IP65 ingress protection
- Bluetooth support with UNIS-B Plus app for admins and V-CARD app for mobile key users
- Anti-tamper
- Open supervised device protocol (OSDP) support that allows peripheral devices to interface with control panels or other security management systems
- Paxton approved integration
- Built-in 13.56MHz card reader
- Supports Biometric, RFID or Bluetooth as access methods
- Integrates with various Access Control systems via Wiegand
- Networkable or standalone
- Wiegand in and out

The AC2000SC is an outdoor fingerprint recognition and card terminal enclosed in an IP65 housing keeping out dust and moisture. The terminal uses Bluetooth and can operate either standalone, networked or with a third party access control system.



 Paxton  
Approved  
Integration

## Specification

### Performance

<b>CPU</b>	ARM9, 4000MHz
<b>Memory</b>	32MB NOR, DDR, 64MB

### Others

<b>Ingress Protection</b>	IP65
<b>FRR / FAR</b>	0.1% / 0.0001%
<b>Resolution</b>	500dpi
<b>Fingerprint Sensor</b>	Optical sensor, Platen area: 14.8 × 17.9 mm
<b>Operating Temperature</b>	-20°C~60°C
<b>Operating Voltage</b>	DC12V
<b>Power Consumption</b>	Stand By: 90mA, Active: 110mA
<b>Certificates</b>	KE, CE, FCC, RoHS
<b>Dimensions</b>	58 × 187.9 × 51.6 mm

### Interface

<b>Communication</b>	TCP/IP, Bluetooth, Wiegand In/Out, RS485
<b>Log Capacity</b>	51,000
<b>Fingerprints (Templates)</b>	20,000 (1:1), 3,000 (1:N)
<b>Maximum Users</b>	10,000
<b>RFID Card Option</b>	13.56 MHz (Standard), 125 KHz EM (Optional), HID prox (Optional), HID iClass (Optional)

## Dimensions



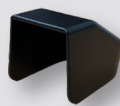
## Accessories



**VRH2000**  
Vandal Resistant Stainless Steel Surface Enclosure for AC2000SC



**SH2000**  
External Stainless Steel Surface Enclosure for AC2000SC / AC2200SC



**ACSC2**  
Sunlight Cover for Fingerprint Module fits AC2000SC & AC2200SC